



A Centennial Celebration: The Sibley Music Library turns 100

The New York State/Ontario Chapter of the Music Library Association meets in Rochester, New York this October for a very special celebration: the 100th anniversary of the Sibley Music Library at the Eastman School of Music. Please join us for an inspiring series of lectures, concerts, and tours as the Sibley Library commemorates this important milestone. Our chapter meeting commences on Friday, October 22nd, 2004 at 1:00 p.m. and runs through Saturday, October 23rd at noon.

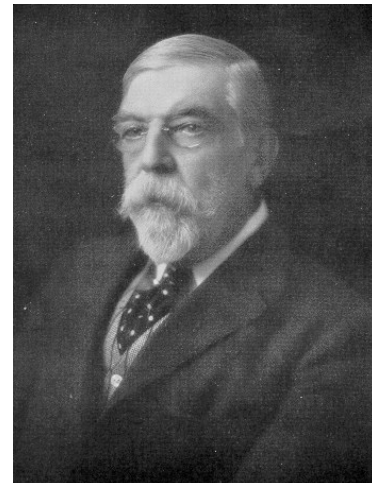
Founded in 1904 by Hiram Watson Sibley, the Sibley Music Library at the Eastman School of Music is the largest and most comprehensive academic music library in the Americas. With holdings of nearly three-quarters of a million items, the Library offers vast resources for performance and research, and regularly draws musical scholars, performers, and enthusiasts from all over the world as well as from the Rochester community. The Ruth T. Watanabe Special Collections has more than 150,000 rare items and archival collections, including composer manuscripts such as Debussy's *La Mer* and Kurt Weill's *Dreigroschenoper*, many first and early editions of the works of the great composers, letters to and from prominent musicians and composers, photographs, and iconographic materials. The Eastman Audio Archive preserves recordings of Eastman performances dating back to 1930.

The Sibley Centennial will be celebrated over two weekends, the second of which runs concurrently with the NYS/O Chapter meeting (registration for the NYS/O conference is a fee of \$10). Numerous guest lectures, tours, and papers will be presented. Please turn to page 7 for information about the first Centennial weekend, and page 3 for information about the NYS/O conference.

In this issue:

2004 Annual Meeting.....	1,3
Message from the Chair.....	2
Call for Nominations.....	9
Financial Report	8
Accommodations & Map.....	4
Dining Information	5
Dining and Parking Maps.....	6
1 st Centennial Weekend.....	7
NYSO Membership.....	Insert
Registration & Directions..	Insert

**Hiram Watson Sibley
(1845-1932)
Founder of the
Sibley Music Library**



(photo from the 1933 Eastman yearbook *Score*)

Message from the Chair - by Carole Vidali, Syracuse University



Hello members of NYS/O! This year has been a very busy one for me, as I know it has been for many of you as well. Now we are experiencing the “stretto effect” at the University with many threads coming together quickly as students return to campus.

I hope to see all of you at our fall NYS/O meeting October 22-23 in Rochester. This will be a very special occasion as it is the second of two weekends in the centennial celebration of Sibley Library’s founding (the first weekend’s schedule is also included in this newsletter).

In addition to prominent guest speakers, **Bonna Boettcher**, Vice-President/President-elect of the Music Library Association, will try to attend our meeting.

Thanks to the MLA Board, our Chapter was awarded two travel grants for \$150 each this year. I encourage you to tell eligible new librarians or library students whom you know to apply (see p.9 for specific information). Members who have never attended a Chapter meeting before are also eligible for these grants, which help offset the cost of travel and housing.

The other good news is that we finally have a Newsletter editor: **Gerry Szymanski**, who takes over for **Dale Vargason**, our incoming Chapter Chair and former Newsletter editor. Thank you both! Gerry will also try to get us caught up on our e-versions of the Newsletter by giving webmaster **Kevin Michki** the files to put up on our chapter website.

The Chapter was well represented at the annual Music Library Association meeting in Washington, D.C. in February. Dale Vargason, one of the Best-of-Chapter presenters, gave his paper on *The Ernst Bacon Archive at Syracuse University* first heard by NYS/O members at the Syracuse meeting in 2001. Congratulations Dale!

At the Chapter Chairs breakfast at the national meeting in D.C., we discussed the possibility of holding a joint meeting with the New England Chapter in 2005. A recent communication from **Pat Fisk**, Vice-Chair/Chair-Elect of the New England Chapter indicates they are still interested in such a meeting if we can work out a site agreeable to the members of both Chapters. Also discussed was the possibility of putting our Newsletter out in electronic format, except for subscribing institutions and the MLA Archives at the University of Maryland, which would receive paper copies.

As your chair for the past year, I thank you for your support! It has been a pleasure working with the dedicated members of this organization. I encourage all members to get involved, run for office, and tell other librarians and students about our meetings. Networking with others in the profession is essential for the further development of our field. Please take the opportunity to be active in our chapter!

NYS/O Conference 2004 – Sibley Music Library

Friday, October 22, 2004

Ciminelli Lounge, Eastman Student Living Center

- 12:30 p.m. Registration \$10 fee which can be mailed (see p.
- 1:00 p.m. Welcome: Daniel Zager, Librarian, Sibley Music Library;
and Carole Vidali, Chapter Chair, Syracuse University
- 1:15 p.m. Gerry Szymanski "Telegraphs and Tunes: The Sibley Family Legacy"
- 1:45 p.m. Dan Zager "Sibley Music Library: A Look at Our First Hundred Years"
- 2:15 p.m. Linda Blair and Dale Vargason "Three Ages of Sibley Music Cataloging: From Pioneer Days to Automation and Beyond."
- 2:45 p.m. Break
- 3:00 p.m. Jim Farrington "PDF'ing the Public Domain: Sibley's Digital Score Initiative"
- 3:30 p.m. David Peter Coppen "A Partnership Continues: The Carl Fischer Archive at the Eastman School of Music"
- 4:00 p.m. Chapter Business Meeting (with greetings from Bonna Boettcher, Vice President/President-elect, MLA)

Sibley Music Library, Miller Center

- 4:30 p.m. Coffee Break and refreshments in Sibley Staff Lounge (2nd floor)
- 4:45 p.m. Start of behind-the-scenes tours of Conservation Lab, Recordings Stacks, Technical Services and Special Collections
- 5:30 p.m. Dinner (on your own)

Concerts and Recitals

- 8:00 p.m. Kilbourn Hall - Eastman Jazz Ensemble - Bill Dobbins, dir.; guest Gary Foster, alto saxophone
- 8:00 p.m. Asbury First United Methodist Church - David Higgs, Professor of Organ
David will play the church's large Austin organ as well as an organ by George Bozeman recently installed in the rear gallery at Asbury. Bozeman's instrument is in the eighteenth-century Central German tradition of Gottfried Silbermann.

Saturday, October 23, 2004

Howard Hanson Hall, Eastman School of Music Main Building, 4th floor

- 9:45 a.m. "The Music Library, Past, Present and Future: A Personal Memoir" Guest lecture by Thomas Mathiesen, Distinguished Professor of Musicology and David H. Jacobs Chair in Music, Director of the Center for the History of Music Theory and Literature, Indiana University (Co-sponsored by the Departments of Music Theory and Musicology)
- 11:00 a.m. Recital of works held uniquely by the Sibley Music Library
(Jointly coordinated by Alice Carli and David Peter Coppen)

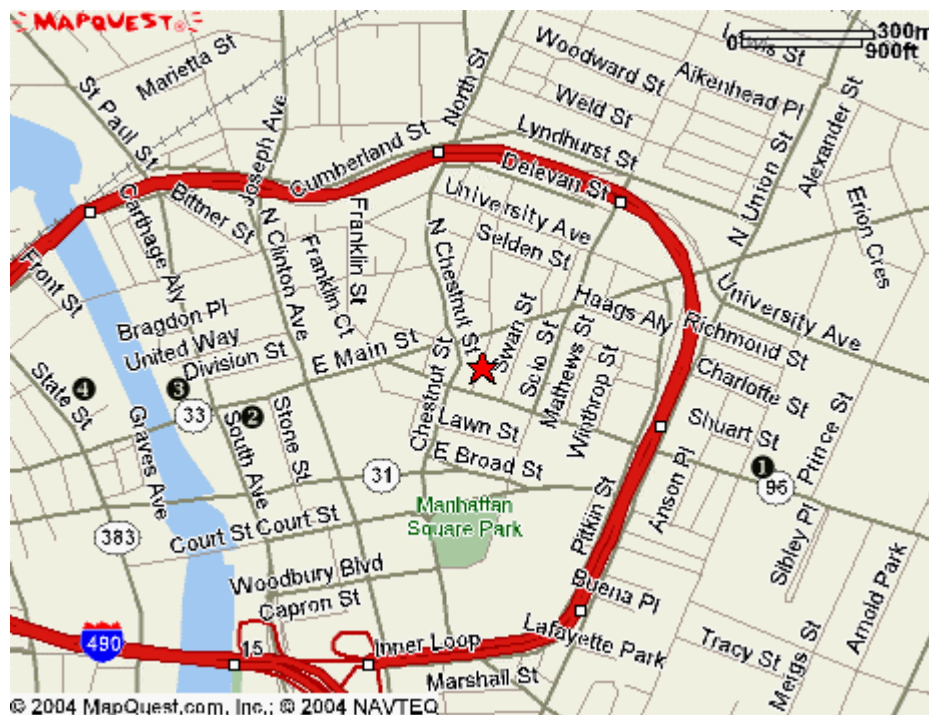
Concerts and Recitals

- 8:00 p.m. Downtown United Presbyterian Church - Hans Davidsson, Professor of Organ
Hans will play Johann Sebastian Bach's *Clavieruebung, III Teil*, on the C. B. Fisk organ

Accommodations

Hotels in Rochester near the Eastman School of Music

- ❶ **Days Inn** 84 East Ave. Rochester, NY, 14607 (585) 325-5010 - A short 10 minute walk from Eastman, the hotel is in the vibrant East End with shopping, restaurants and clubs just a step away. Rates as of newsletter publication were in the \$70 - \$80 range for the weekend of the conference.
- ❷ **Hyatt Regency Rochester** 125 East Main Street, Rochester, NY 14604 (585) 546-1234 Fax (585) 546-6777 – This downtown skyscraper offers spacious rooms and great views of the city. Rates as of newsletter publication were in the \$100 - \$130 range for the weekend of the conference.
- ❸ **Four Points Hotel** 120 East Main Street, Rochester, NY 14604 (585) 546-6400 Fax (585) 546-1341 - With 466 guest rooms and a shoreline view of the Genesee River, the Four Points Hotel is a short 15 minute walk from the Eastman School of Music. Rates as of newsletter publication were in the \$145 range for the weekend of the conference.
- ❹ **Crown Plaza Hotel** 70 State St. Rochester, NY 14614 (585) 546-3460 – located near the historic High Falls District, the Crown Plaza is about a 20 minute walk from the Eastman School of Music. Rates as of newsletter publication were in the \$89 - \$459 (for a suite!) range for the weekend of the conference.



- ❶ **Days Inn**
- ❷ **Hyatt Regency Rochester**
- ❸ **Four Points Hotel**
- ❹ **Crown Plaza Hotel**

Dining

Selected restaurants in Rochester near the Eastman School of Music

- ❶ **Java's Café** – Gibbs St. – located directly across from the Sibley Library, Java's offers a wide variety of teas, coffees and espresso drinks, open weekdays and weekends until midnight; as well as panini-style grilled meat and vegan sandwiches between 11-2 on weekdays, with some sandwich service on Saturdays.
- ❷ **Center Stage Café** – Gibbs St. – located inside of the Miller Center, this diner offers sandwiches, grilled entrees, soups and salads in a casual atmosphere. Open for breakfast and lunch on weekdays and Saturdays.
- ❸ **Max of Eastman Place** – Gibbs St. - located in the Miller Center, this fine restaurant and bar features elegant dining at its best. One of Rochester's top restaurants. Open for lunch on weekdays, and dinner on weekdays and weekends.
- ❹ **Rosey's Italian Café** – Main St. – located kitty corner from the Miller Center on Main St. this Italian diner has wonderful lasagna and salads that feature three kinds of dressing "Italian, Italian, and Italian!" Open for lunch on weekdays only.
- ❺ **Golden Port Dim Sum** – East Ave. – just around the corner from the Eastman School, this Chinese restaurant offers traditional entrees and appetizers, but shines in Dim Sum, an a la carte menu of small delicacies, offering a wide variety. Open for lunch and dinner on weekdays and weekends.
- ❻ **Alexandria** – East Ave. – just around the corner from Eastman, a full-service Mediterranean restaurant located on a lower level featuring falafel, gyros and salads. Open for lunch and dinner on weekdays and weekends.
- ❼ **Flour City Diner** – Chestnut Street – known in the neighborhood as the "German Restaurant" this diner located in the Columbus building specializes Wiener schnitzel! Open for breakfast and lunch weekdays only.
- ❽ **Spot Café** - East Ave.- just down the street from Eastman you'll find the former art deco Hallman's Chevrolet showroom converted into a spacious coffee house which offers a wide variety of teas, coffees and espresso drinks, open weekdays and weekends until midnight; as well as sandwiches and snacks during the lunch hour.
- ❾ **Matthew's East End Grille** - East Ave.– located next to Spot Café, this bar and grill has terrific hamburgers, salads and a wide choice of appetizers. Open for lunch and dinner on weekdays and weekends.
- ❿ **Veneto** – East Ave. – a unique Italian eatery featuring wood-fired pizza and pasta in a beautiful setting – sidewalk service available in good weather – just past the Inner Loop on East Ave. Open for lunch and dinner on weekdays and weekends.

(See **Dining Map** and key on p. 6)

Dining Map



- | | |
|------------------------|-----------------------------|
| ① Java's Café | ⑥ Alexandria |
| ② Center Stage Café | ⑦ Flour City Diner |
| ③ Max of Eastman Place | ⑧ Spot Café |
| ④ Rosey's Italian Café | ⑨ Matthew's East End Grille |
| ⑤ Golden Port Dim Sum | ⑩ Veneto |

Parking



- ① **East End Garage – East Ave./Swan St./Scio St./E. Main St.** – large and well-lit – Walk towards the Swan St. exit, around the construction and down Barrett Place (covered walkway) to Gibbs St. and Sibley Library. \$4.30 per day, Saturday is free.
- ② **Fairway Parking – East Ave.** – an inexpensive surface lot right next to the East End Garage – enter on East Ave. next to Milestones Club – Walk up East Ave. towards downtown (you will need to cross due to construction) – take the temporary crosswalk near Alexandria Restaurant and walk towards Gibbs St. – turn right and the Sibley Library is on the left. \$2.50 per day.
- ③ **Fairway Parking – E. Main St.** – a large inexpensive surface lot right next to the Sibley Library and the Eastman Theatre – Walk down Gibbs St. crossing E. Main St.- the Sibley Library will be on your right. \$2.50 per day.

Some NYS/O chapter members might be interested in also attending all or part of the first weekend of the Sibley Library's centennial, and we present here the schedule as of press time.

Sibley Music Library Centennial Celebration, Weekend One Schedule **15–16 October 2004**

(Concurrent with Eastman School of Music Alumni Weekend, not NYS/O)

Friday, October 15

1:30; 2:30; 3:30 pm Eastman campus tours, each concluding with a tour of SML (SML portion of tours coordinated by Head of Public Services, Jim Farrington)

3:30–5:00 p.m. Guest lecture by Christoph Wolff, Adams University Professor of Historical Musicology and Curator of the Isham Memorial Library, Harvard University
NSL 404 (Sponsored by Department of Musicology)

5:00–6:00 p.m. Sibley Music Library Centennial Celebration Opening Reception
James Undercofler, Dean, Eastman School of Music
Atrium of Miller Center
After reception move to Sibley Music Library for opening of exhibits illuminating the history of the Library

Saturday, October 16

10:00–11:00 a.m. “Behind the Scenes at the Sibley Music Library”
Join Library Conservator Alice Carli and Circulation Services Librarian Gerald Szymanski for a look at the Sibley conservation lab and Sibley's recorded sound collections (Limited to 10 participants)

11:15–12:15 p.m. Guest lecture by Marie McCarthy, Associate Professor, Music Education; Chair, Division of Music Education, University of Maryland
Atrium of Miller Center (Sponsored by Department of Music Education)

1:00–2:00 p.m. Reception to honor Marvin Rabin, MA '48, display of selected items from the Rabin papers held by the Department of Special Collections, the Sibley Music Library Special Collections Reading Room, 4th floor of SML (Sponsored by the Department of Music Education)

2:00–3:00 p.m. “Behind the Scenes at the Sibley Music Library” [repeat of morning event]

8:00–10:00 p.m. Eastman Philharmonia and Eastman-Rochester Chorus Concert – Eastman Theatre
Including the world premiere of *Four Seascapes for Orchestra and Chorus*, a work specially commissioned from Dominick Argento, PhD '58, for the celebration of Sibley Music Library's Centennial

FINANCIAL REPORT

From the Secretary/Treasurer:

David Peter Coppen will distribute the Financial Statement at the Business Meeting in October. At that time he will raise for discussion selecting a new financial institution for the chapter's account, owing to the recent implementation of monthly service fees.

To date, two members have returned dues for the 2004-05 academic year. All members are asked to return their dues at this time (see NYS/O membership form insert included in this newsletter).

Chapter Officers

Chair (through October 2004)

Carole Vidali, Syracuse University

cfvidali@mailbox.syr.edu

Vice-Chair/Chair-Elect

G. Dale Vargason, Sibley Music Library, Eastman School of Music

dvargason@esm.rochester.edu

Past Chair

Ed Komara, SUNY Potsdam

subramjm@potsdam.edu

Secretary/Treasurer (through October 2004)

David Peter Coppen, Sibley Music Library, Eastman School of Music

dcoppen@esm.rochester.edu

Newsletter Editor

Gerry Szymanski, Sibley Music Library, Eastman School of Music

gszymanski@esm.rochester.edu

SUBSCRIBE TO NYSO-L

The Chapter's electronic mail distribution list is NYSO-L; the address is: nyso-l@listserv.acsu.buffalo.edu

To Subscribe to NYSO-L: - Send an e-mail message to

LISTSERV@LISTSERV.ACSU.BUFFALO.EDU

- In the body of the message, type:

SUB NYSO-L JANE DOE

-You will receive notification that you have been added to the list.

Questions about NYSO-L may be addressed to:

Rick McRae, Music Library, University at Buffalo mcrac@acsu.buffalo.edu (716) 645-2924

Call for Nominations

Two offices will be open for nomination this year:

Chair-Elect **and** **Secretary/Treasurer**

If you know of someone whom you would like to nominate, or if you are interested in these positions, please e-mail Carole Vidali at <Cfvidali@syr.edu> with nominations. Later in September, or early October, ballots will be mailed, and hopefully we will have the election results by the Fall meeting.

Travel Grants Available for NYS/O Chapter Meeting

Please let students or new paraprofessional staff members who are interested in attending the 2004 NYS/O conference, that the Chapter offers up to two (2) grants of up to \$150 each toward travel expenses awarded to eligible applicants.

Anyone who meets one of more of the following qualifications may apply:

- Anyone who has never previously attended a meeting of the NYS/O Chapter
- Any applicant who is current library school student, whether or not they have previously attended a meeting of the NYS/O Chapter
- Any applicant who currently works as a paraprofessional or library assistant, whether or not they have previously attended a meeting of the NYS/O Chapter

Applicants must live, work, or attend school in the state of New York (north of Westchester and Rockland counties), or the Canadian province of Ontario. Current membership in NYS/O or national MLA is not required.

To apply, the following three documents should be sent to Carole Vidali, Chair of NYS/O at the address below. Electronic submission is encouraged, but applications may also be submitted by mail.

- A letter of application dealing your reasons for wishing to attend the meeting and other pertinent information. Be sure to include your full name, address, e-mail address and phone number
- A letter in support of the application from a supervisor or college professor. This letter will be sent separately if the application is being submitted via e-mail, but may accompany the application if it is being sent by regular mail.
- A budget showing expenses for the trip (limited to \$150)

Notification of awards will take place soon after that date and checks mailed. The committee reserves the right to award fewer than two (2) travel grants. In order to be assured of lodging, we recommend making reservations in advance of notification. **Deadline:** Mail submissions must be postmarked by **October 1, 2004**, and e-mailed submissions must be sent on or before **October 1, 2004**.

Carole Vidali, Music Librarian, Bird Library, Syracuse University, Syracuse NY 13244
315-443-9779 cfvidali@syr.edu

NYS/O Conference at Sibley Music Library October 22nd and 23rd, 2004 - Registration Information

Driving Directions:

To Rochester from the west –

Take I-90 (NYS Thruway) east until Leroy, take I-490 east (crossing I-390) until signs for Downtown Rochester (Inner Loop) – stay in left lane and get off onto Inner Loop (not Plymouth St.) – take Inner Loop until Scio St. exit – turn right onto Scio St., cross University Ave. and then choose to turn on right onto E. Main St. to Fairway parking, or continue on to Scio St. entrance of East End Garage, or to East Ave. to Fairway parking near Milestones Nightclub (turn left).

To Rochester from the east –

Take I-90 (NYS Thruway) west until Victor, take I-490 west (crossing I-590) until almost to downtown, take the Goodman St. exit – turn right onto Goodman St. and cross these lights: Pearl, Monroe, and Park. The next light will be East Ave., turn left onto East Ave. – cross these lights: Alexander and Union/Pitkin (Inner Loop). Parking is then located at Fairway lot on East Ave. (near Milestones Nightclub), turning right onto Scio St. for entrance to East End Garage, or continuing and turning right onto Gibbs St. and crossing over E. Main St. for Fairway Parking (on left).

Registration fee for the NYS/O conference is \$10 paid preferably in advance (but may be paid at the door). Please note the registration fee is separate from NYS/O dues!

Cut here ✂ ----- ✂ Cut here

Registration Form for 2004 NYS/O conference at Sibley Music Library

Name: _____

Address: _____

Email: _____

Make check or money order for \$10 in US dollars payable to:

NY/Ontario Music Library Association

Send this membership form with check to:

**David Peter Coppen
Special Collections Librarian
Sibley Music Library
Eastman School of Music
27 Gibbs Street
Rochester, NY 14604 USA**

2004/2005 Membership Form

MLA New York State/Ontario Chapter

**Membership year begins September 1.
Dues are \$10.00 US; Students, \$5.00 US**

Name: _____

Address: _____

Home Telephone: _____

Institution: _____

Office Telephone: _____

Preferred email: _____

Make check or money order in US dollars payable to: **NY/Ontario Music Library Association**

Send this membership form with check to:

**David Peter Coppen
Special Collections Librarian
Sibley Music Library
Eastman School of Music
27 Gibbs Street
Rochester, NY 14604
USA**



Barbara Duncan, first director and librarian of the Sibley Music Library (1922-1947)

(Image from the Albert R. Stone Negative Collection, Rochester Museum & Science Center, Rochester, N.Y. used by permission)

NYS/O News

Gerry Szymanski, Editor

Sibley Music Library

Eastman School of Music

27 Gibbs St.

Rochester, NY 14604