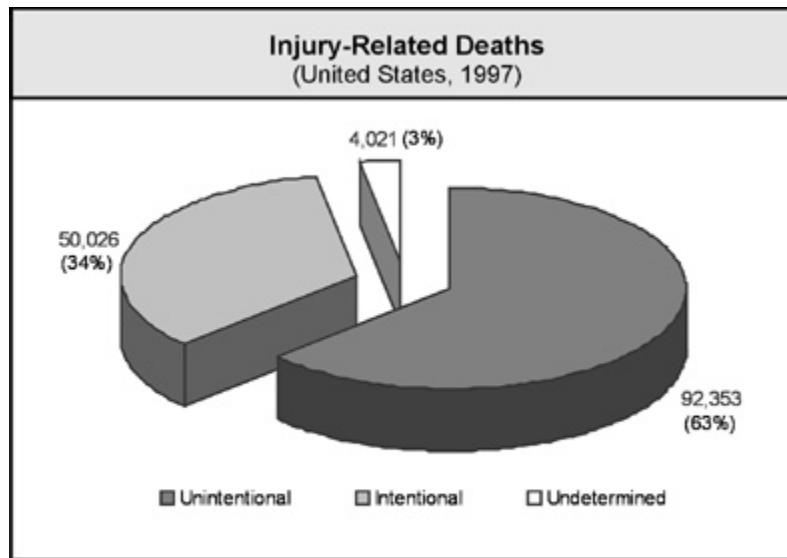


PRIORITY: INJURY AND VIOLENCE

Healthy People 2010 characterizes the risk of injury in the following way:

The risk of injury is so great that most persons sustain a significant injury at some time during their lives. Nevertheless, this widespread human damage too often is taken for granted, in the erroneous belief that injuries happen by chance and are the result of unpreventable "accidents." In fact, many injuries are not "accidents," or random, uncontrollable acts of fate; rather, most injuries are predictable and preventable.

(<http://www.healthypeople.gov/Document/HTML/Volume2/15Injury.htm>)



Source: CDC, NCHS. National Vital Statistics System (NVSS), 1997.

Issues and Trends

The following issues and trends are described in Healthy People 2010:

In 1997, 146,400 persons in the United States died from injuries due to a variety of causes such as motor vehicle crashes, firearms, poisonings, suffocations, falls, fires, and drownings. About 400 persons die from injuries each day, including 55 children and teenagers. One death out of every 17 in the United States results from injury. Of these deaths, 63 percent are classified as unintentional and 34 percent as intentional.

Unintentional injury deaths include approximately 42,000 resulting from motor vehicle crashes per year. In 1997, of approximately 50,000 intentional injury deaths, almost 31,000 were classified as suicide and nearly 20,000 as homicide. In 1997, injuries accounted for 20 percent more years of potential life lost (YPLL) than cancer did (1,990 per 100,000 compared to 1,500 per 100,000).

.....Injuries often are classified on the basis of events and behaviors that preceded them as well as the intent of the persons involved. For example, many injuries are preceded by alcohol consumption in amounts or circumstances that increase risk of injury. Although the events leading to an intentional injury and an unintentional injury differ, the outcomes and extent of the injury are similar (<http://www.healthypeople.gov/Document/HTML/Volume2/15Injury.htm>).

With respect to violence and abuse prevention, it is noted that

Violence claims the lives of many of the Nation's young persons and threatens the health and well-being of many persons of all ages in the United States. On an average day in America, 53 persons die from homicide, and a minimum of 18,000 persons survive interpersonal assaults, 84 persons complete suicide, and as many as 3,000 persons attempt suicide. Youth continue to be involved as both perpetrators and victims of violence. Elderly persons, females, and children continue to be targets of both physical and sexual assaults, which are frequently perpetrated by individuals they know. Examples of general issues that impede the public health response to progress in this area include the lack of comparable data sources, lack of standardized definitions and definitional issues, lack of resources to establish adequately consistent tracking systems, and lack of resources to fund promising prevention programs (<http://www.healthypeople.gov/Document/HTML/Volume2/15Injury.htm>).

Healthy People 2010 and Injury and Violence

The specific objectives employed to establish baseline measures and to evaluate progress toward reducing injury and violence are summarized in the following Healthy People 2010 table.

Objective		1988 Baseline*	2010 Target
20.1	Reduce deaths from work related injuries. (Deaths per 100,000 workers aged 16 years and older)		
20.1a	All industry	4.5	3.2
20.1b	Mining	23.6	16.5
20.1c	Construction	14.6	10.2
20.1d	Transportation	11.8	8.3
20.1e	Agriculture, forestry, and fishing	24.1	16.9
20.2	Reduce work-related injury resulting in medical treatment, lost time from work, or restricted work activity (injuries per 100 full time workers aged 16 years and older)	1998	2010
20.2a	All industry	6.2	4.3
20.2b	Construction	8.7	6.1
20.2c	Health services	7.9 (1997)	5.5
20.2d	Agriculture, forestry, and fishing	7.6	5.3
20.2e	Transportation	7.9 (1997)	5.5
20.2f	Mining	4.7	3.3
20.2g	Manufacturing	8.5	6.0
20.21h	Adolescent workers	4.8 (1997)	3.4
20.3	Reduce the rate of injury and illness cases involving days away from work due to overexertion or repetitive motion (per 100,000 fulltime	675 (1997)	338

	workers)		
20.4	Reduce pneumoconiosis deaths (among persons aged 15 years+	2,928 (1997)	1,900
20.5	Reduce deaths from work-related homicide (per 100,000 workers aged 16 years and older)	0.5 (1998)	0.4
20.6	Reduce work-related assaults. (per 100 workers aged 16 years and older)	0.85 (1987-1992)	0.60
20.7	Reduce the number of persons who have elevated blood lead concentrations from work exposures (per million persons aged 16 to 64 years)	93 (1998)	0
20.8	Reduce occupational skin diseases or disorders among full-time workers (per 100,000 full-time workers aged 16 and older)	67 new cases in 1997	47
20.9	Increase the proportion of worksites employing 50 or more persons that provide programs to prevent or reduce employee stress.	37 (1992)	50%
20.10	Reduce occupational needlestick injuries among health care workers.	600,000 (1996)	420,000
20.11	(developmental) Reduce new cases of work-related, noise induced hearing loss.		

- Except as noted.

The two objectives outlined below are singled out as leading indicators to measure progress toward objectives.

Violence prevention objectives in Healthy People 2010.

- 15-15a. Reduce deaths caused by motor vehicle crashes.
- 15-32. Reduce homicides.

A. Health Data

Chautauqua County and New York State

Unintentional Injuries

1. Unintentional Injury Mortality

Note that mortality-based indicators are presented as both crude and age-adjusted rates. The standard population used for adjustment was the 2000 United States population. Age adjustment allows for the comparison of rates between counties because they are less influenced by differences in county age distribution.

1a. Total Mortality

Unintentional injury mortality in Chautauqua County from 2002 through 2004 occurred at a three-year adjusted rate of 27.8 per 100,000 residents. This rate was above the regional rate of 23.4 and the state rate of 20.7, but it is the lowest rate of the Southern Tier Counties, and of the eight counties in the region, only two have lower rates than Chautauqua.

UNINTENTIONAL INJURY - DEATHS AND DEATH RATES PER 100,000 RESIDENTS
SOURCE: 2002-2004 VITAL STATISTICS DATA AS OF SEPTEMBER, 2006
ADJUSTED RATES ARE AGE ADJUSTED TO THE 2000 UNITED STATES POPULATION

REGION/COUNTY	DEATHS				POPULATION CRUDE ADJUSTED		
	2002	2003	2004	TOTAL	2003	RATE	RATE
REG-1 WESTERN NEW YORK							
ALLEGANY	26	12	18	56	50,562	36.9	35.4
CATTARAUGUS	19	28	29	76	83,354	30.4	28.6
CHAUTAUQUA	33	51	42	126	137,645	30.5	27.8
ERIE	196	239	202	637	941,293	22.6	20.0
GENESEE	20	29	21	70	60,020	38.9	35.7
NIAGARA	52	53	60	165	218,150	25.2	22.9
ORLEANS	14	15	11	40	43,629	30.6	29.8
WYOMING	14	20	17	51	42,932	39.6	37.4
REGION Total	374	447	400	1,221	1,577,585	25.8	23.4
NEW YORK STATE TOTAL	4,246	4,194	3,927	12,367	19,190,115	21.5	20.7

(<http://www.health.state.ny.us/statistics/chac/mortality/totacc.htm>)

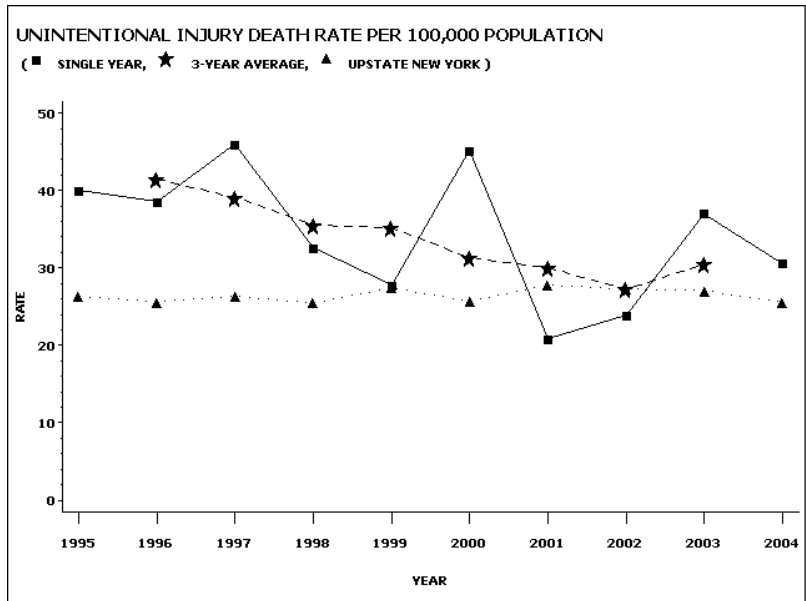
Over a twelve year period from 1993 to 2004, the county's crude rate has varied from a high of 45.9 in 1997 to a low of 20.9 in 2001. The 2004 rate (30.6) is substantially above the low in 2001, although 2004 represents the fourth lowest rate of the 12 year time period. The three-year average rate smoothes out the year-to-year fluctuations.

Unintentional Injury Death Rate Per 100,000 Population

Year	Single Year	3-Year Average	Upstate New York
1993	32.8		26.3
1994	39.8	37.6	25.6
1995	40.0	39.5	26.3
1996	38.6	41.5	25.6
1997	45.9	39.1	26.3
1998	32.7	35.5	25.5
1999	27.8	35.2	27.4
2000	45.1	31.3	25.7
2001	20.9	30.0	27.8
2002	23.9	27.2	27.3
2003	37.1	30.5	27.1
2004	30.6		25.6

(<http://www.health.state.ny.us/statistics/chac/mortality/totacc6.htm>)

As the chart below shows, the three-year average of unintentional injury deaths has been declining since 1997, though the last data point shows a slight rise.



Unintentional deaths can be separated into the following two general categories: motor vehicle, and non-motor vehicle. Of all unintentional injury deaths in 2004, 47.6% occurred in motor vehicle accidents.

**UNINTENTIONAL DEATHS IN CHAUTAUQUA COUNTY, 1997-2004,
MORTALITY RATE PER 100,000 POPULATION**

Chautauqua County	2004		2003		2002		2001		2000		1999		1998		1997	
	#	RATE	#	RATE	#	RATE	#	RATE	#	RATE	#	RATE	#	RATE	#	RATE
Unintentional Injury	42	30.6	51	37.1	33	23.9	29	20.9	63	45.1	39	27.7	46	32.6	65	45.9
Motor Vehicle	20	14.6	19	13.8	12	8.7	10	7.2	16	11.4	19	13.5	17	12.0	30	21.2
Non-Motor Vehicle	22	16.0	32	23.2	21	15.2	19	13.7	47	33.6	20	14.2	29	20.5	35	24.7

1b. Motor Vehicle

Motor vehicle deaths in Chautauqua County from 2002 through 2004 occurred at a three-year adjusted rate of 11.7 per 100,000 residents. This rate was above both the regional rate of 9.5 and the state rate of 8.0. Chautauqua county has the fourth lowest motor vehicle accident rate of all counties in the region.

MOTOR VEHICLE - DEATHS AND DEATH RATES PER 100,000 RESIDENTS
SOURCE: 2002-2004 VITAL STATISTICS DATA AS OF SEPTEMBER, 2006
ADJUSTED RATES ARE AGE ADJUSTED TO THE 2000 UNITED STATES POPULATION

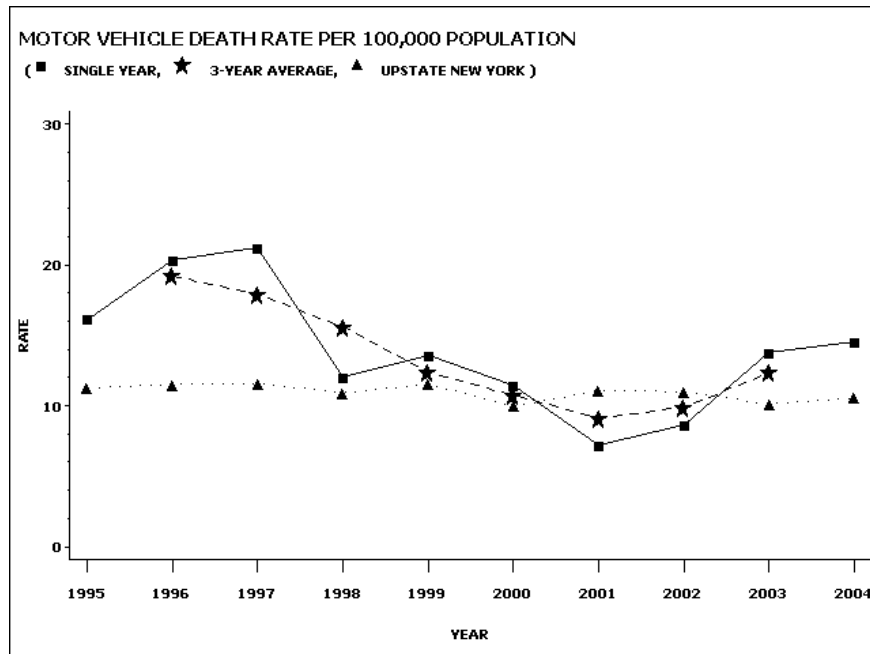
REGION/COUNTY	DEATHS				POPULATION 2003	CRUDE RATE	ADJUSTED RATE
	2002	2003	2004	TOTAL			
REG-1 WESTERN NEW YORK							
ALLEGANY	13	7	13	33	50,562	21.8	21.1
CATTARAUGUS	6	11	7	24	83,354	9.6	9.4
CHAUTAUQUA	12	19	20	51	137,645	12.4	11.7
ERIE	69	69	71	209	941,293	7.4	7.2
GENESEE	7	12	7	26	60,020	14.4	14.3
NIAGARA	26	23	22	71	218,150	10.8	10.5
ORLEANS	6	10	6	22	43,629	16.8	16.8
WYOMING	8	8	11	27	42,932	21.0	20.2
REGION TOTAL	147	159	157	463	1,577,585	9.8	9.5
NEW YORK STATE TOTAL	1,654	1,514	1,525	4,693	19,190,115	8.2	8.0

Over a twelve year period from 1993 to 2004, the county's crude rate has varied from a high of 21.2 in 1997 to a low of 7.2 in 2001. The 2004 rate of 14.6 falls just about exactly in the middle of these two extremes. The most recent three year crude average is the fourth lowest of the period.

Motor Vehicle Death Rate Per 100,000 Population

Year	Single Year	3-Year Average	Upstate New York
1993	16.8		12.4
1994	19.6	17.5	11.5
1995	16.1	18.7	11.3
1996	20.4	19.2	11.5
1997	21.2	17.9	11.6
1998	12.1	15.6	10.9
1999	13.6	12.4	11.5
2000	11.5	10.8	10.0
2001	7.2	9.1	11.1
2002	8.7	9.9	11.0
2003	13.8	12.3	10.1
2004	14.6		10.6

As the chart below shows, the three year average motor vehicle death rate over the last ten years was declining until 2001, when it began to rise.



A substantial numbers of motor vehicle injuries and deaths were alcohol related as the table below shows. The Chautauqua County three-year rate (86.2 per 100,000 population) is higher than both the region (71.1) and the state (45.1), and is the third highest rate of all the counties in the region.

ALCOHOL RELATED MOTOR VEHICLE DEATHS AND INJURIES - RATE PER PER 100,000 POPULATION
 SOURCE: 2002-2004 NYS DEPARTMENT OF MOTOR VEHICLES DATA AS OF SEPTEMBER, 2006

ALCOHOL RELATED MOTOR VEHICLE DEATHS AND INJURIES POPULATION						
REGION/COUNTY	2002	2003	2004	TOTAL	2003	RATE
ALLEGANY	58	30	51	139	50,562	91.6
CATTARAUGUS	64	65	76	205	83,354	82.0
CHAUTAUQUA	114	119	123	356	137,645	86.2
ERIE	646	604	590	1,840	941,293	65.2
GENESEE	58	67	55	180	60,020	100.0
NIAGARA	162	172	128	462	218,150	70.6
ORLEANS	42	26	28	96	43,629	73.3
WYOMING	43	15	27	85	42,932	66.0
REGION TOTAL	1,187	1,098	1,078	3,363	1,577,585	71.1
New York State Total	9,273	8,298	8,406	25,977	19,190,115	45.1

1c. Total Unintentional Injury Hospitalization

Unintentional injury hospitalization in Chautauqua County from 2002 through 2004 occurred at a three-year rate of 634.7 per 100,000 residents. This rate was below the regional rate of 681.2 and above the state rate of 628.8, but it is the lowest rate of the Southern Tier Counties, and of the eight counties in the region, only one has a lower rate than Chautauqua.

UNINTENTIONAL INJURY - DISCHARGE RATE PER 100,000 POPULATION
SOURCE: 2002-2004 SPARCS DATA AS OF SEPTEMBER, 2006

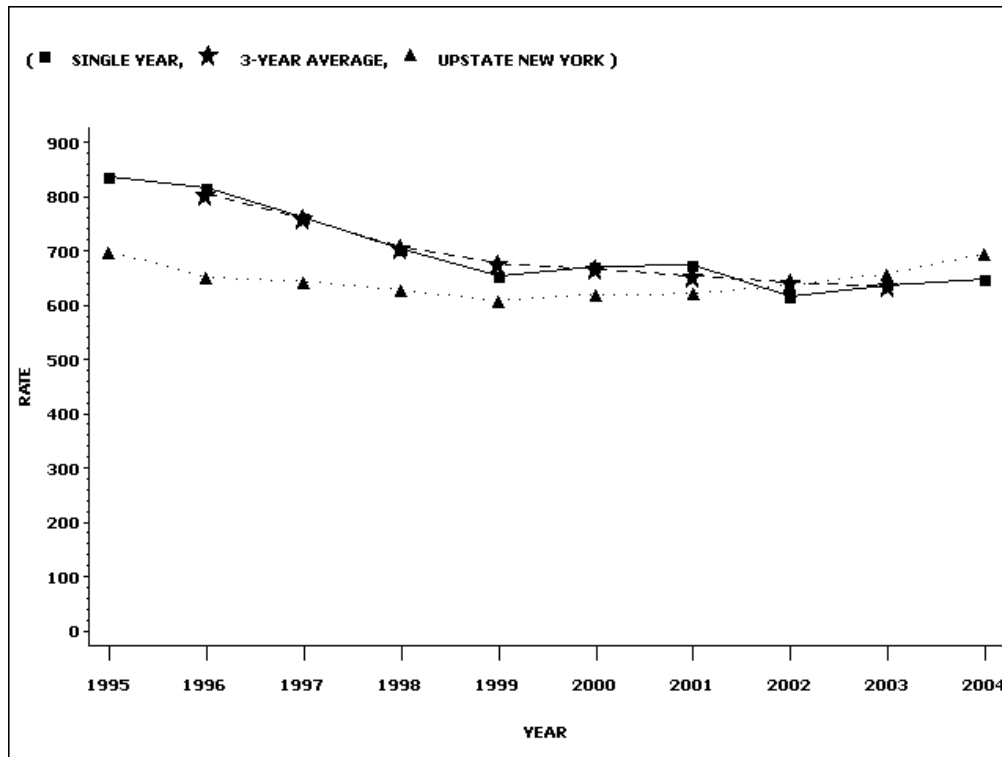
REGION/COUNTY	DISCHARGES			POPULATION		RATE
	2002	2003	2004	TOTAL	2003	
REG-1 WESTERN NEW YORK						
ALLEGANY	435	381	374	1,190	50,562	784.5
CATTARAUGUS	591	559	559	1,709	83,354	683.4
CHAUTAUQUA	852	878	891	2,621	137,645	634.7
ERIE	6,084	6,094	6,690	18,868	941,293	668.2
GENESEE	377	410	380	1,167	60,020	648.1
NIAGARA	1,592	1,665	1,679	4,936	218,150	754.2
ORLEANS	276	245	254	775	43,629	592.1
WYOMING	351	334	289	974	42,932	756.2
REGION TOTAL	10,558	10,566	11,116	32,240	1,577,585	681.2
NEW YORK STATE TOTAL	114,020	119,033	128,956	362,009	19,190,115	628.8

Over a twelve year period from 1993 to 2004, the county's single-year rate has varied from a high of 881 in 1993 to its lowest rate of 615.9 in 2002. The most recent three-year average, from 2002-2004, is the lowest of the period, at 634.2 per 100,000 population.

Unintentional Injury Discharge Rate Per 100,000 Population

Year	Single Year	3-Year Average	Upstate New York
1993	881.0		720.2
1994	863.4	860.7	721.5
1995	837.6	838.7	699.0
1996	814.9	804.6	651.4
1997	761.0	760.1	643.8
1998	703.9	706.4	627.4
1999	653.9	676.6	608.6
2000	672.0	666.4	619.7
2001	673.3	653.8	620.9
2002	615.9	642.4	637.0
2003	637.9	634.2	658.1
2004	649.1		695.2

As the chart below shows, the three-year average unintentional injury discharge rate has declined over the ten year period between 1995 and 2004.



1e. Total Unintentional Injury Hospitalization age <10

Unintentional injury hospitalization for children under ten years of age in Chautauqua County from 2002 through 2004 occurred at a three-year rate of 243.5 per 100,000 residents in this age group. This rate was slightly below the regional rate of 247.3 and also below the state rate of 281.9. It is the lowest rate of the Southern Tier Counties, and of the eight counties in the region, two have lower rates than Chautauqua.

UNINTENTIONAL INJURY (AGE <10) - DISCHARGE RATE PER 100,000 POPULATION AGE <10
SOURCE: 2002-2004 SPARCS DATA AS OF SEPTEMBER, 2006

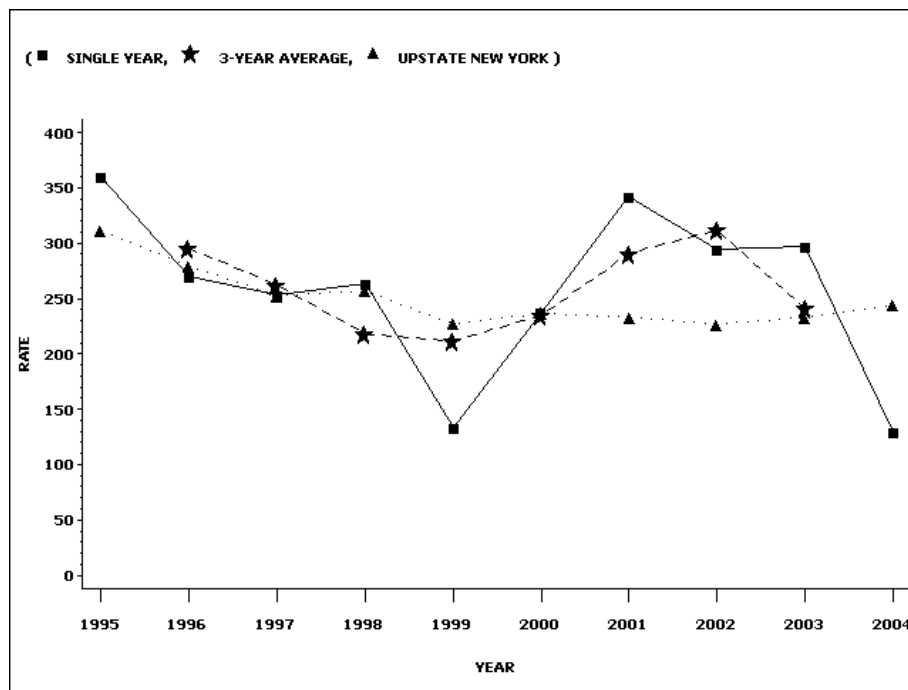
REGION/COUNTY	DISCHARGES			TOTAL	POPULATION 2003	RATE
	2002	2003	2004			
REG-1 WESTERN NEW YORK						
ALLEGANY	21	13	9	43	5,317	269.6
CATTARAUGUS	38	26	17	81	9,869	273.6
CHAUTAUQUA	47	46	20	113	15,471	243.5
ERIE	325	263	254	842	110,482	254.0
GENESEE	13	11	11	35	7,141	163.4
NIAGARA	76	65	49	190	25,294	250.4
ORLEANS	12	3	3	18	5,092	117.8
WYOMING	6	15	15	36	4,389	273.4
REGION TOTAL	538	442	378	1,358	183,055	247.3
NEW YORK STATE TOTAL	6,750	6,755	7,127	20,632	2,439,899	281.9

Over a twelve year period from 1993 to 2004, the county's rate has gone from a high of 374.2 in 1993 to a low of 130.0 in 2004, though varying greatly during this time period.

Unintentional Injury (Age <10) Discharge Rate Per 100,000 Population Age <10

Year	Single Year	3-Year Average	Upstate New York
1993	374.2		353.7
1994	331.4	355.1	326.4
1995	359.8	320.9	311.3
1996	270.5	295.3	279.8
1997	253.2	262.5	252.6
1998	263.5	218.0	257.1
1999	133.3	211.7	227.1
2000	237.6	235.0	236.5
2001	342.2	290.7	233.2
2002	294.4	311.9	226.9
2003	297.3	241.3	233.2
2004	130.0		243.9

As the chart shows, a generally downward trend for this age group through 1999 reversed through 2000 and 2001, and began to decline again after 2001.



1f. Total Unintentional Injury Hospitalization age 10-14

Unintentional injury hospitalization for children 10-14 years of age in Chautauqua County from 2002 through 2004 occurred at a three-year rate of 211.3 per 100,000 residents of this age group. This rate was below the regional rate of 216.5 and the state rate of 252.8. It is the second lowest rate of the Southern Tier Counties, and of the eight counties in the region, only two have a lower rate than Chautauqua.

UNINTENTIONAL INJURY (AGE 10-14) - DISCHARGE RATE PER 100,000 POPULATION AGE 10-14
SOURCE: 2002-2004 SPARCS DATA AS OF SEPTEMBER, 2006

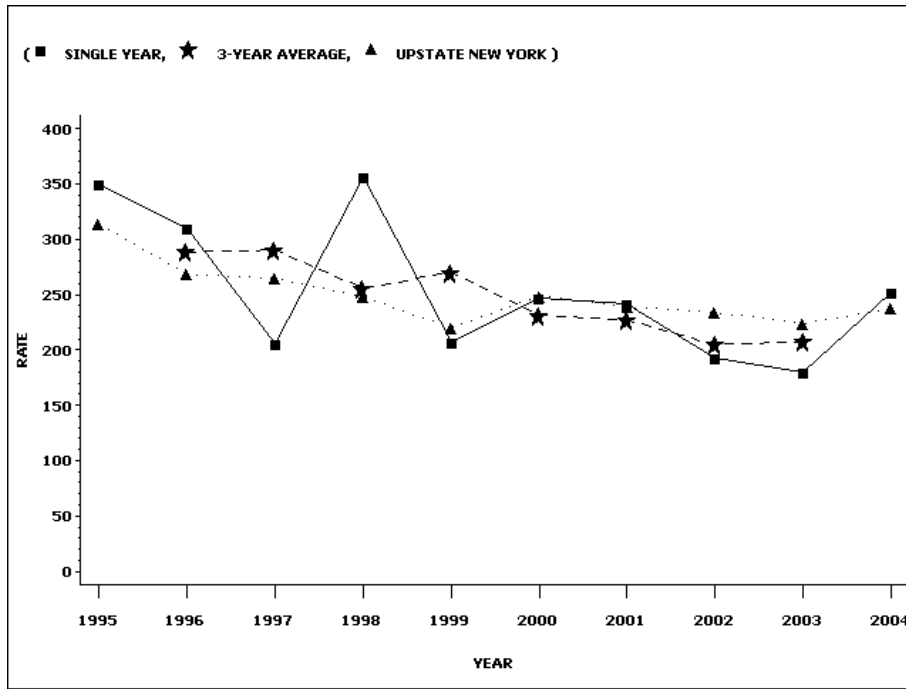
REGION/COUNTY	DISCHARGES				POPULATION	RATE
	2002	2003	2004	TOTAL	2003	
REG-1 WESTERN NEW YORK						
ALLEGANY	16	9	12	37	3,397	363.1
CATTARAUGUS	16	9	6	31	5,877	175.8
CHAUTAUQUA	19	17	24	60	9,466	211.3
ERIE	154	130	131	415	65,144	212.4
GENESEE	9	12	6	27	4,366	206.1
NIAGARA	40	34	27	101	15,196	221.5
ORLEANS	9	4	8	21	3,238	216.2
WYOMING	13	3	4	20	2,932	227.4
REGION TOTAL	276	218	218	712	109,616	216.5
NEW YORK STATE TOTAL	3,363	3,254	3,477	10,064	1,327,017	252.8

Over a twelve year period from 1993 to 2004, the county's rate has varied from a high of 525.1 in 1993 to a low of 179.6 in 2003.

Unintentional Injury (Age 10-14) Discharge Rate Per 100,000 Population Age 10-14

Year	Single Year	3-Year Average	Upstate New York
1993	419.8		364.6
1994	525.1	431.6	344.7
1995	349.9	394.8	314.2
1996	309.9	288.5	268.4
1997	205.2	290.3	264.6
1998	356.4	255.7	248.0
1999	206.4	269.9	220.0
2000	247.2	231.5	248.8
2001	241.1	227.0	238.8
2002	192.1	204.7	233.9
2003	179.6	207.6	223.5
2004	251.6		237.8

As the chart shows, with the exception of a few bumps along the way, the three-year unintentional injury rate for this age group has followed a generally downward trend.



1g. Total Unintentional Injury Hospitalization age 15-24

Unintentional injury hospitalization for persons 15-24 years of age in Chautauqua County from 2002 through 2004 occurred at a three year rate of 257.3 per 100,000 residents of this age group. This rate was below the regional rate of 317.0 and the state rate of 347.6. It is the lowest rate of the Southern Tier Counties, and also of the eight counties in the region.

UNINTENTIONAL INJURY (AGE 15-24) - DISCHARGE RATE PER 100,000 POPULATION AGE 15-24
SOURCE: 2002-2004 SPARCS DATA AS OF SEPTEMBER, 2006

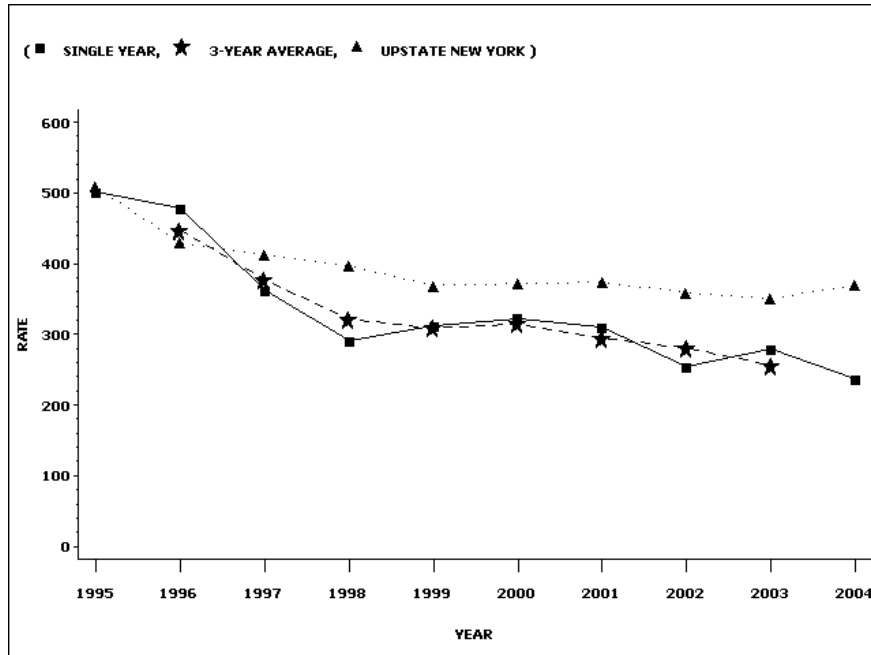
REGION/COUNTY	DISCHARGES			TOTAL	POPULATION	
	2002	2003	2004		2003	RATE
REG-1 WESTERN NEW YORK						
ALLEGANY	34	29	33	96	11,128	287.6
CATTARAUGUS	40	45	45	130	13,245	327.2
CHAUTAUQUA	56	61	52	169	21,893	257.3
ERIE	410	382	370	1,162	127,089	304.8
GENESEE	27	36	38	101	8,220	409.6
NIAGARA	116	122	88	326	30,528	356.0
ORLEANS	29	22	13	64	6,359	335.5
WYOMING	33	31	24	88	6,116	479.6
REGION TOTAL	745	728	663	2,136	224,578	317.0
New York State Total	8,799	8,730	9,509	27,038	2,592,776	347.6

Over a twelve year period from 1993 to 2004, the county's rate has varied from a high of 542.2 in 1993 to a low of 236.6 in 2004. The most recent three year average is also the lowest of this time period.

Unintentional Injury (Age 15-24) Discharge Rate Per 100,000 Population Age 15-24

Year	Single Year	3-Year Average	Upstate New York
1993	542.2		558.9
1994	532.9	525.7	517.8
1995	501.4	504.7	508.6
1996	479.1	447.8	429.5
1997	362.7	376.9	413.3
1998	291.0	321.5	397.3
1999	311.9	308.7	368.9
2000	322.8	314.7	371.7
2001	309.5	294.8	373.9
2002	254.1	280.4	358.8
2003	278.6	256.4	350.7
2004	236.6		369.8

As the graph shows, there has been a downward trend in the three-year average for this age group.



1h. Total Unintentional Injury Hospitalization age 25-64

Unintentional injury hospitalization for persons 25-64 years of age in Chautauqua County from 2002 through 2004 occurred at a three year rate of 363.1 per 100,000 residents in this age group. This rate was below the regional rate of 404.7 and the state rate of 421.5. Chautauqua County has the lowest rate of the eight counties in the region.

UNINTENTIONAL INJURY (AGE 25-64) - DISCHARGE RATE PER 100,000 POPULATION AGE 25-64 SOURCE: 2002-2004 SPARCS DATA AS OF SEPTEMBER, 2006

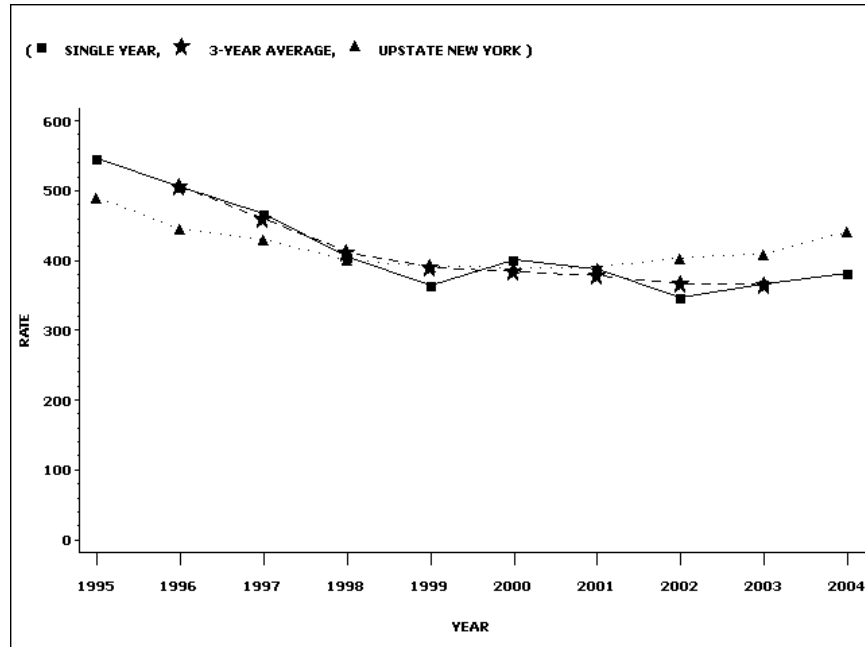
REGION/COUNTY	DISCHARGES				POPULATION	
	2002	2003	2004	TOTAL	2003	RATE
REG-1 WESTERN NEW YORK						
ALLEGANY	150	111	111	372	23,645	524.4
CATTARAUGUS	215	177	199	591	42,122	467.7
CHAUTAUQUA	237	254	263	754	69,211	363.1
ERIE	1,800	1,800	1,976	5,576	490,998	378.5
GENESEE	131	118	125	374	31,495	395.8
NIAGARA	524	569	557	1,650	113,975	482.6
ORLEANS	104	83	98	285	23,389	406.2
WYOMING	134	110	98	342	24,183	471.4
REGION TOTAL	3,295	3,222	3,427	9,944	819,018	404.7
NEW YORK STATE TOTAL	41,107	42,778	46,875	130,760	10,341,464	421.5

Over a twelve year period from 1993 to 2004, the county's rate has varied from a high of 576.3 in 1993 to its lowest rate of 346.2 in 2002. The most recent three-year average is the lowest of this period.

Unintentional Injury (Age 25-64) Discharge Rate Per 100,000 Population Age 25-64

Year	Single Year	3-Year Average	Upstate New York
1993	576.3		513.0
1994	571.6	564.4	525.7
1995	545.3	540.6	491.1
1996	505.1	505.9	444.9
1997	467.6	459.5	430.0
1998	405.7	412.5	400.4
1999	363.9	390.2	391.7
2000	400.8	384.1	389.8
2001	387.6	378.3	390.6
2002	346.2	367.0	403.7
2003	367.0	365.2	410.0
2004	382.3		441.3

As the graph shows, there has been a general downward trend in Chautauqua County's unintentional injury rate for age 25-64 during the last ten years.



1j. Total Unintentional Injury Hospitalization age 65+

Unintentional injury hospitalization for age 65 and over in Chautauqua County from 2002 through 2004 occurred at a three-year rate of 2,353 per 100,000 residents in this age group. This rate was below the regional rate of 2498.8 and slightly above the state rate of 2323.8. It is the lowest rate of the Southern Tier Counties, and of the eight counties in the region, only one has a lower rate than Chautauqua.

UNINTENTIONAL INJURY (AGE 65+) - DISCHARGE RATE PER 100,000 POPULATION AGE 65+
SOURCE: 2002-2004 SPARCS DATA AS OF SEPTEMBER, 2006

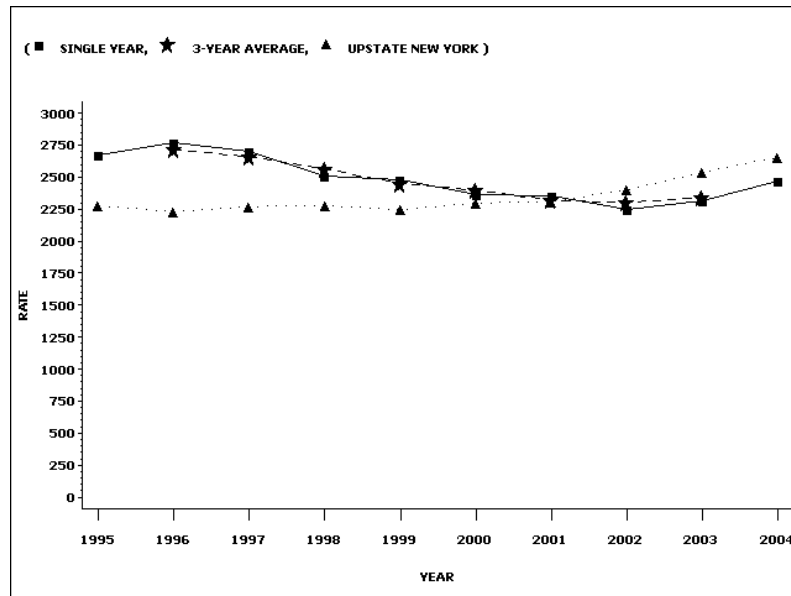
REGION/COUNTY	DISCHARGES				POPULATION	RATE
	2002	2003	2004	TOTAL	2003	
REG-1 WESTERN NEW YORK						
ALLEGANY	214	219	209	642	7,075	3024.7
CATTARAUGUS	282	302	292	876	12,241	2385.4
CHAUTAUQUA	493	500	532	1,525	21,604	2353.0
ERIE	3,395	3,519	3,959	10,873	147,580	2455.8
GENESEE	197	233	200	630	8,798	2386.9
NIAGARA	836	875	958	2,669	33,157	2683.2
ORLEANS	122	133	132	387	5,551	2323.9
WYOMING	165	175	148	488	5,312	3062.2
REGION TOTAL	5,704	5,956	6,430	18,090	241,318	2498.8
NEW YORK STATE TOTAL	54,001	57,516	61,998	173,515	2,488,959	2323.8

Over a twelve year period from 1993 to 2004, the county's rate has varied from a high of 2,791 in 1993 to a low of 2243.1 in 2002. The most recent three-year average is the third lowest of this period.

Unintentional Injury (Age 65+) Discharge Rate Per 100,000 Population Age 65+

Year	Single Year	3-Year Average	Upstate New York
1993	2,791.0		2,251.5
1994	2,683.6	2,716.4	2,285.5
1995	2,674.7	2,709.7	2,278.8
1996	2,770.9	2,715.7	2,228.8
1997	2,701.4	2,661.0	2,270.0
1998	2,510.0	2,564.4	2,277.9
1999	2,481.1	2,451.3	2,245.1
2000	2,362.3	2,398.2	2,298.2
2001	2,350.7	2,319.0	2,310.0
2002	2,243.1	2,302.8	2,401.5
2003	2,314.4	2,340.4	2,536.0
2004	2,465.5		2,656.8

As the graph shows, from 1995-2004 there has been a general, but not steep, downward trend in the three-year average for this age group, which contrasts with the slightly rising trend for upstate New York.



1k. Work-Related Injury Mortality

Table being updated on hin. No other data available.

11. Traumatic Brain Injury

Traumatic brain injury hospitalization in Chautauqua County from 2002 through 2004 occurred at a three-year rate of 47.7 per 100,000 residents. This rate was below both the regional rate of 74.8 and the state rate of 73.8. It is the lowest rate of the counties in the western New York region.

TRAUMATIC BRAIN INJURY - DISCHARGE RATE PER 100,000 POPULATION SOURCE: 2002-2004 SPARCS DATA AS OF SEPTEMBER, 2006

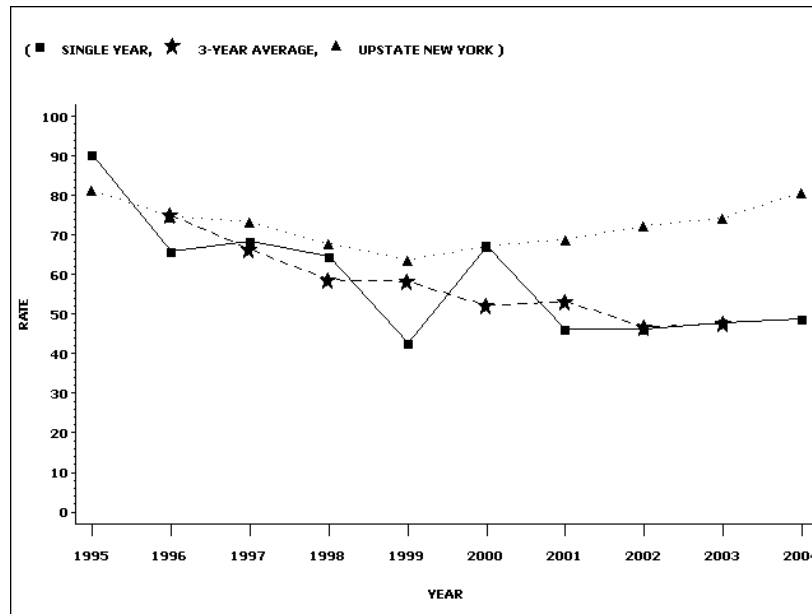
REGION/COUNTY	DISCHARGES			POPULATION		RATE
	2002	2003	2004	TOTAL	2003	
REG-1 WESTERN NEW YORK						
ALLEGANY	49	32	42	123	50,562	81.1
CATTARAUGUS	64	68	68	200	83,354	80.0
CHAUTAUQUA	64	66	67	197	137,645	47.7
ERIE	715	726	761	2,202	941,293	78.0
GENESEE	43	44	36	123	60,020	68.3
NIAGARA	169	186	164	519	218,150	79.3
ORLEANS	25	30	17	72	43,629	55.0
WYOMING	37	34	31	102	42,932	79.2
REGION TOTAL	1,166	1,186	1,186	3,538	1,577,585	74.8
NEW YORK STATE TOTAL	13,035	13,855	15,581	42,471	19,190,115	73.8

Over a twelve year period from 1993 to 2004, the county's rate has varied from a high of 90.5 in 1995 to its lowest rate of 42.8 in 1999. The most recent three-year average is the second lowest of the period.

Traumatic Brain Injury Discharge Rate Per 100,000 Population

Year	Single Year	3-Year Average	Upstate New York
1993	82.4		95.8
1994	77.6	83.5	81.7
1995	90.5	78.0	81.4
1996	66.0	75.0	74.7
1997	68.5	66.4	73.3
1998	64.6	58.7	67.8
1999	42.8	58.3	63.8
2000	67.3	52.1	67.2
2001	46.1	53.3	69.0
2002	46.3	46.8	72.3
2003	47.9	47.7	74.4
2004	48.8		80.8

As the graph shows there has been a general downward in the three-year average rate from 1995 through 2004.



2. Violent And Abusive Behavior

2a. Suicide Mortality

Recall that mortality-based indicators are presented as both crude and age-adjusted rates. The standard population used for adjustment was the 2003 United States population. Age adjustment allows for the comparison of rates between counties because they are less influenced by differences in county age distribution.

Suicide mortality in Chautauqua County from 2002 through 2004 occurred at a three-year adjusted rate of 7.9 per 100,000 residents. This rate was above the regional rate of 7.6 and the state rate of 6.3, but it is the lowest rate of the Southern Tier Counties, and of the eight counties in the region, three have lower rates than Chautauqua.

SUICIDE - DEATHS AND DEATH RATES PER 100,000 RESIDENTS
SOURCE: 2002-2004 VITAL STATISTICS DATA AS OF SEPTEMBER, 2006
ADJUSTED RATES ARE AGE ADJUSTED TO THE 2000 UNITED STATES POPULATION

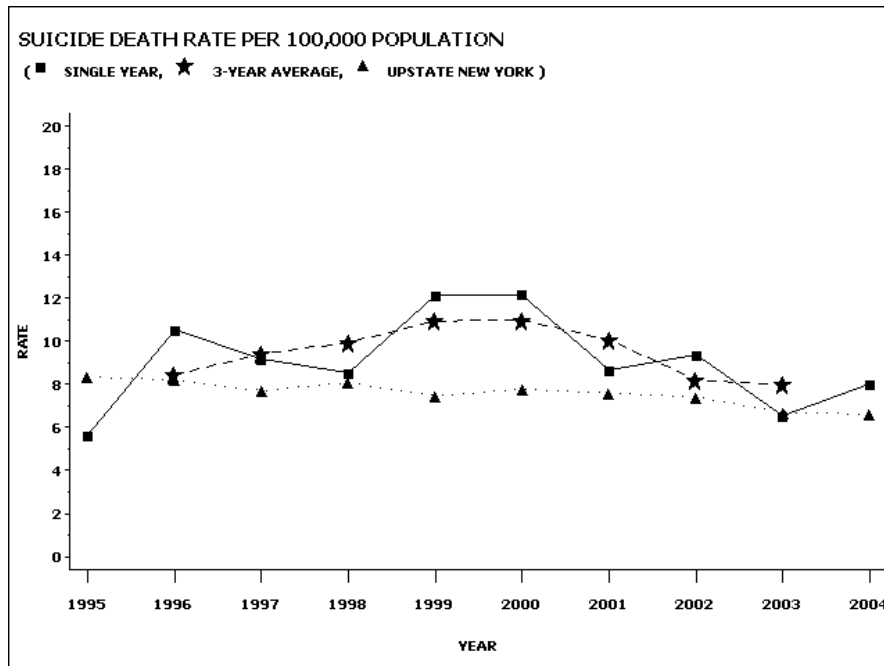
REGION/COUNTY	DEATHS				POPULATION 2003	CRUDE ADJUSTED	
	2002	2003	2004	TOTAL		RATE	RATE
REG-1 WESTERN NEW YORK							
ALLEGANY	7	6	4	17	50,562	11.2	11.1
CATTARAUGUS	10	7	10	27	83,354	10.8	10.6
CHAUTAUQUA	13	9	11	33	137,645	8.0	7.9
ERIE	72	68	68	208	941,293	7.4	7.1
GENESEE	5	5	3	13	60,020	7.2	6.9
NIAGARA	20	17	11	48	218,150	7.3	7.4
ORLEANS	3	3	6	12	43,629	9.2	8.7
WYOMING	5	6	4	15	42,932	11.6	11.3
REGION TOTAL	135	121	117	373	1,577,585	7.9	7.6
NEW YORK STATE TOTAL	1,292	1,206	1,196	3,694	19,190,115	6.4	6.3

Over a twelve year period from 1993 to 2004, the county's crude rate has varied from a high of 12.6 in 1994 to a low of 5.6 in 1995. The 2004 rate (8.0) is the third lowest rate of the twelve year period. The most recent three-year crude average is the lowest of the period. Comparisons among these rates need to take into account that they are based on small numbers.

Suicide Death Rate Per 100,000 Population

Year	Single Year	3-Year Average	Upstate New York
1993	10.5		8.3
1994	12.6	9.6	8.8
1995	5.6	9.6	8.3
1996	10.5	8.4	8.2
1997	9.2	9.4	7.7
1998	8.5	9.9	8.1
1999	12.1	10.9	7.5
2000	12.2	11.0	7.8
2001	8.7	10.1	7.6
2002	9.4	8.2	7.4
2003	6.5	8.0	6.7
2004	8.0		6.6

As graph the shows, based on a small number of cases, the Chautauqua County three-year average rate shows an upward trend from 1996 through 2000, after which it began to decline and subsequently leveled-off.



2b. Adolescent/Young Adult (Age 15-19) Suicide Mortality

Suicide mortality in Chautauqua County from 2002 through 2004 among persons age 15-19 occurred at a three-year crude rate of 9.1 per 100,000 residents. Adjusted rates are not available for this data. This rate was above the regional rate of 6.1 and the state rate of 5.0, but it is the fourth lowest rate of the counties in western New York. All rates are based on extremely small numbers.

ADOLESCENT/YOUNG ADULT SUICIDE (AGE 15-19) - DEATHS AND DEATH RATES PER 100,000 RESIDENTS AGE 15-19

SOURCE: 2002-2004 VITAL STATISTICS DATA AS OF SEPTEMBER, 2006

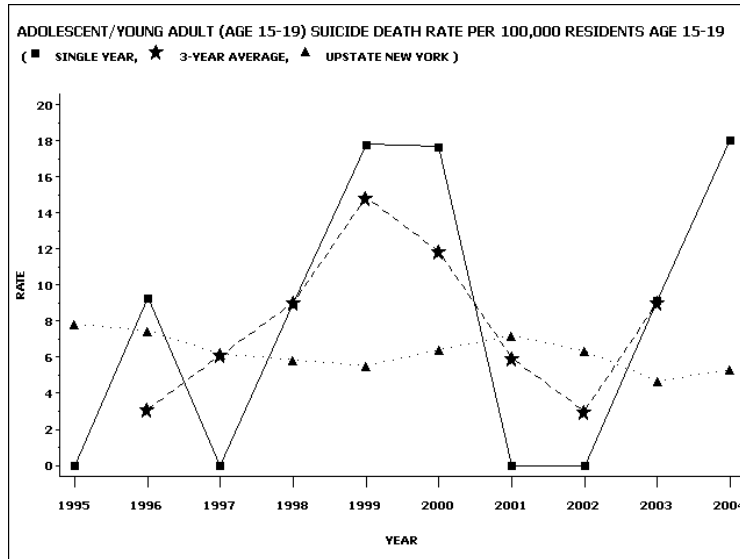
REGION/COUNTY	DEATHS				POPULATION CRUDE	
	2002	2003	2004	TOTAL	2003	RATE
REG-1 WESTERN NEW YORK						
ALLEGANY	0	0	0	0	5,563	0.0
CATTARAUGUS	1	0	2	3	6,930	14.4
CHAUTAUQUA	0	1	2	3	10,929	9.1
ERIE	3	2	3	8	64,526	4.1
GENESEE	0	1	1	2	4,282	15.6
NIAGARA	2	0	1	3	15,348	6.5
ORLEANS	1	0	0	1	3,257	10.2
WYOMING	1	0	0	1	3,037	11.0
REGION TOTAL	8	4	9	21	113,872	6.1
NEW YORK STATE TOTAL	68	57	68	193	1,279,454	5.0

Year-by-year rates in this category are based on such small numbers that comparisons are unwise. The most recent three-year crude average is higher than seven of the nine preceding three-year periods.

Adolescent/Young Adult (Age 15-19) Suicide Death Rate Per 100,000 Residents Age 15-19

Year	Single Year	3-Year Average	Upstate New York
1993	0.0		8.3
1994	9.5	3.2	8.2
1995	0.0	6.3	7.8
1996	9.3	3.1	7.5
1997	0.0	6.1	6.2
1998	9.0	9.0	5.9
1999	17.8	14.9	5.5
2000	17.7	11.8	6.4
2001	0.0	5.9	7.2
2002	0.0	3.0	6.3
2003	9.1	9.1	4.7
2004	18.1		5.3

Based on small numbers, lower three-year averages in Chautauqua County since 2000, except for the most recent rate, are reflected in the following graph.



2c. Homicide Mortality

Homicide mortality in Chautauqua County from 2002 through 2004 occurred at a three year adjusted rate of 1.1 per 100,000 residents. This rate was below the regional rate of 4.5 and the state rate of 4.7. Chautauqua's rate was second lowest of the Southern Tier Counties. Of the eight counties in the region, two had lower rates than Chautauqua. All rates are based on extremely small numbers and should be interpreted very cautiously.

HOMICIDE - DEATHS AND DEATH RATES PER 100,000 RESIDENTS
SOURCE: 2002-2004 VITAL STATISTICS DATA AS OF SEPTEMBER, 2006
ADJUSTED RATES ARE AGE ADJUSTED TO THE 2003 UNITED STATES POPULATION

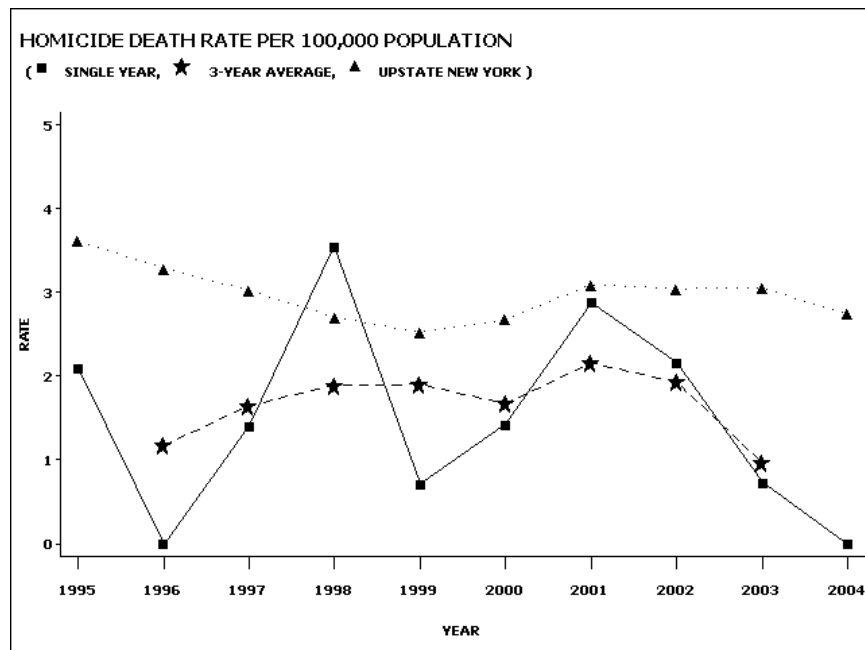
REGION/COUNTY	DEATHS				POPULATION CRUDE ADJUSTED		
	2002	2003	2004	TOTAL	2003	RATE	RATE
REG-1 WESTERN NEW YORK							
ALLEGANY	1	1	0	2	50,562	1.3	1.0
CATTARAUGUS	3	1	3	7	83,354	2.8	2.9
CHAUTAUQUA	3	1	0	4	137,645	1.0	1.1
ERIE	48	61	52	161	941,293	5.7	6.0
GENESEE	0	1	0	1	60,020	0.6	0.6
NIAGARA	6	10	10	26	218,150	4.0	4.3
ORLEANS	3	1	1	5	43,629	3.8	3.8
WYOMING	1	0	0	1	42,932	0.8	1.1
REGION TOTAL	65	76	66	207	1,577,585	4.4	4.5
NEW YORK STATE TOTAL	915	962	866	2,743	19,190,115	4.8	4.7

Year by year rates in this category are based on such small numbers that comparisons are unwise. The most recent three-year crude average is lower than all but one of the preceding three-year rates.

Homicide Death Rate Per 100,000 Population

Year	Single Year	3-Year Average	Upstate New York
1993	3.5		4.4
1994	0.7	2.1	4.1
1995	2.1	0.9	3.6
1996	0.0	1.2	3.3
1997	1.4	1.6	3.0
1998	3.6	1.9	2.7
1999	0.7	1.9	2.5
2000	1.4	1.7	2.7
2001	2.9	2.2	3.1
2002	2.2	1.9	3.0
2003	0.7	1.0	3.1
2004	0.0		2.7

As the graph shows, based on small numbers, the three-year average for Chautauqua County generally rose until 2001, when it started to decline.



2d. Total Self-Inflicted Injury Hospitalization

Self-inflicted injuries in Chautauqua County from 2002 through 2004 occurred at a three year rate of 36.8 per 100,000 residents. This rate was below the regional rate of 51.8 and the state rate of 45.5. The rate in Chautauqua was lower than all but three of the other counties than the region.

SELF-INFLICTED INJURY - DISCHARGE COUNTS and RATE PER 100,000 POPULATION SOURCE: 2000-2004 SPARCS DATA AS OF SEPTEMBER, 2006

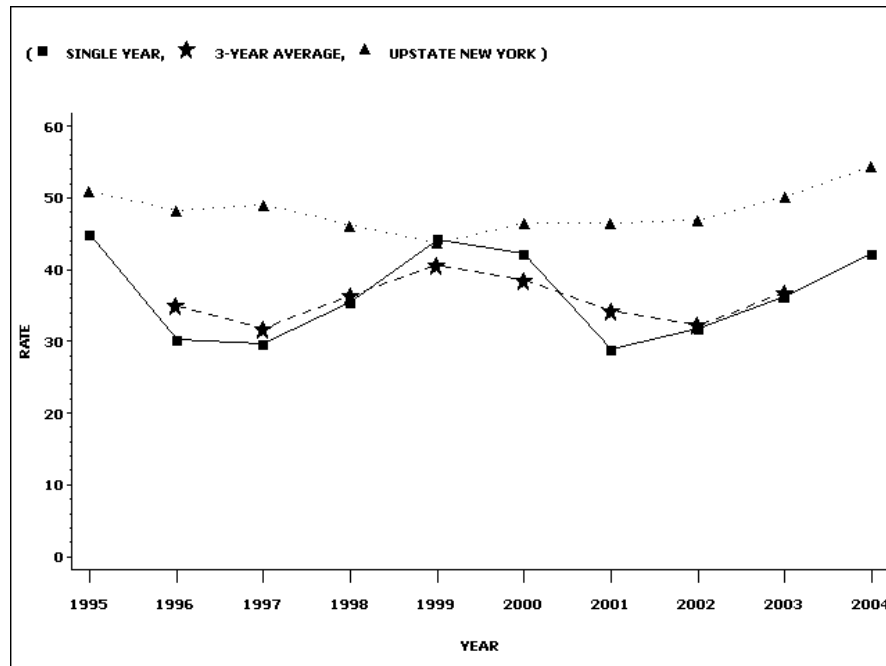
REGION/COUNTY	DISCHARGES				Population 2003	Rate
	2002	2003	2004	TOTAL		
ALLEGANY	18	18	17	53	50,562	34.9
CATTARAUGUS	42	32	36	110	83,354	44.0
CHAUTAUQUA	44	50	58	152	137,645	36.8
ERIE	395	467	493	1,355	941,293	48.0
GENESEE	20	17	24	61	60,020	33.9
NIAGARA	195	207	204	606	218,150	92.6
ORLEANS	13	16	18	47	43,629	35.9
WYOMING	25	25	17	67	42,932	52.0
REGION TOTAL	752	832	867	2,451	1,577,585	51.8
NEW YORK STATE TOTAL	8,117	8,633	9,460	36,210	19,190,115	45.5

Over a twelve year period from 1993 to 2004, the county's single-year rate has varied from a high of 57.3 in 1994 to a low of 28.8 in 2001. The 2004 rate of 42.3 is higher than seven of the twelve years shown.

Self-Inflicted Injury Discharge Rate Per 100,000 Population

Year	Single Year	3-Year Average	Upstate New York
1993	39.1		48.8
1994	57.3	47.1	50.5
1995	44.9	44.2	50.9
1996	30.2	34.9	48.2
1997	29.7	31.8	49.1
1998	35.5	36.5	46.2
1999	44.3	40.7	43.7
2000	42.3	38.5	46.5
2001	28.8	34.3	46.4
2002	31.8	32.3	46.9
2003	36.3	36.8	50.2
2004	42.3		54.3

As the graph shows, the three-year average rate for Chautauqua County rose from 1997 to 1999, after which it declined until 2002, when it began to rise again.



2e. Total Self-Inflicted Injury Hospitalization age 15-19

Self-inflicted injuries in Chautauqua County from 2002 through 2004 among persons age 15-19 occurred at a three year rate of 73.2 per 100,000 residents of this age group. This rate was below the regional rate of 89.6 and the state rate of 96.0. The rate in Chautauqua was the second lowest of the Southern Tier Counties, and of the eight counties in the region, three had a lower rates than Chautauqua. These rates are based on small numbers and should be interpreted cautiously.

SELF-INFLICTED INJURY (AGE 15-19) - DISCHARGE RATE PER 100,000 POPULATION AGE 15-19
SOURCE: 2000-2004 SPARCS DATA AS OF SEPTEMBER, 2006

REGION/COUNTY	DISCHARGES				POPULATION 2003 (15-19)	RATE
	2002	2003	2004	TOTAL		
ALLEGANY	4	2	5	11	5,563	65.9
CATTARAUGUS	5	10	6	21	6,930	101.0
CHAUTAUQUA	9	5	10	24	10,929	73.2
ERIE	40	63	62	165	64,526	85.2
GENESEE	2	4	6	12	4,282	93.4
NIAGARA	23	24	19	66	15,348	143.3
ORLEANS	0	2	0	2	3,257	20.5
WYOMING	1	2	2	5	3,037	54.9
REGION TOTAL	84	112	110	306	113,872	89.6
NEW YORK STATE TOTAL	1,173	1,181	1,330	3,684	1,279,454	96.0

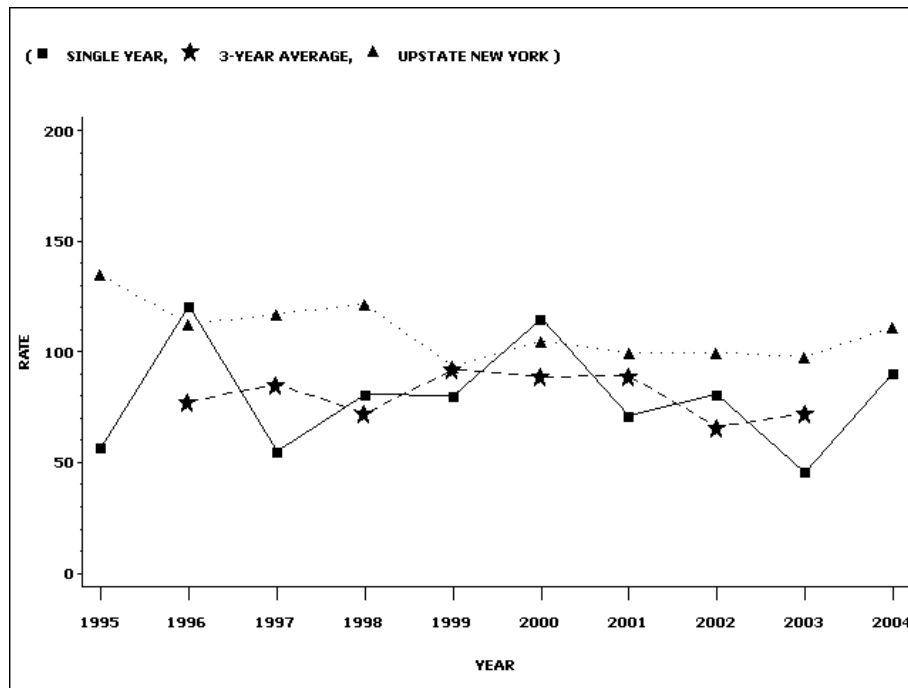
Over a twelve year period from 1993 to 2004, the county's rate has varied from a high of 123.8 in 1994 to a low of 45.7 in 2003. The 2004 rate of 90.4 is up from 45.7 in 2003, but lower than three of the previous eleven years. The most recent three-year average is higher than three of the previous eight three-year periods.

Self-Inflicted Injury (Age 15-19) Discharge Rate Per 100,000 Population Age 15-19

Year Single Year 3-Year Average Upstate New York

Year	Single Year	3-Year Average	Upstate New York
1993	29.0		130.2
1994	123.8	70.0	126.2
1995	56.7	100.5	134.8
1996	120.7	77.6	112.5
1997	55.1	85.4	117.1
1998	81.0	72.2	121.7
1999	80.0	92.1	93.4
2000	115.1	88.8	104.8
2001	71.1	89.2	99.6
2002	81.0	66.1	99.8
2003	45.7	72.5	97.7
2004	90.4		111.1

As the graph shows, the three year average rates have varied over the ten-year period shown.



2f. Drug related Hospitalization

Drug related hospitalizations in Chautauqua County from 2002 through 2004 occurred at a three year rate of 12.5 per 10,000 residents. This rate was below the regional rate of 17.3 and the state rate of 32.6. The rate in Chautauqua was the highest of the Southern Tier Counties, and of the eight counties in the region five had a lower rate than Chautauqua.

DRUG RELATED - DISCHARGE RATE PER 10,000 POPULATION SOURCE: 2002-2004 SPARCS DATA AS OF SEPTEMBER, 2006

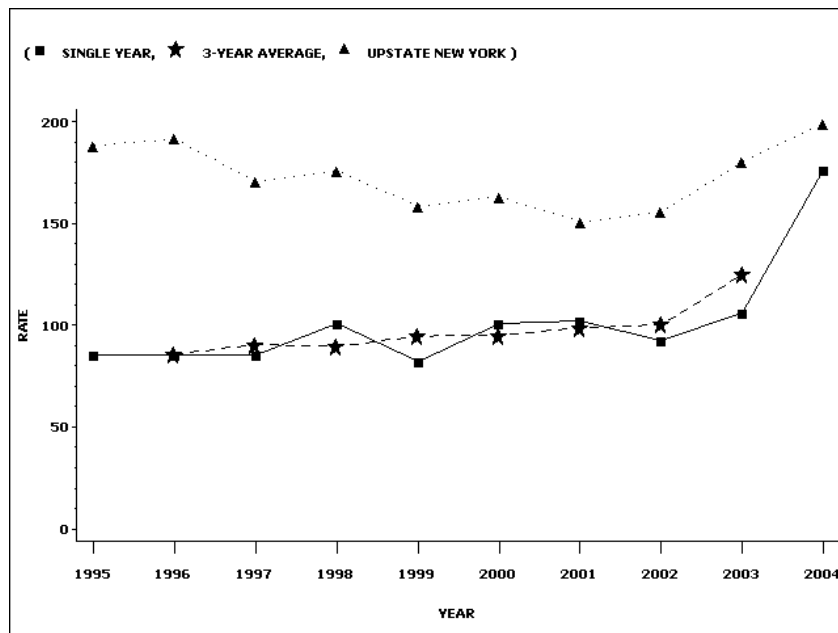
REGION/COUNTY	DISCHARGES			TOTAL	POPULATION 2003	RATE
	2002	2003	2004			
ALLEGANY	50	43	43	136	50,562	9.0
CATTARAUGUS	56	45	85	186	50,562	7.4
CHAUTAUQUA	128	146	242	516	137,645	12.5
ERIE	1,453	2,159	2,253	5,865	941,293	20.8
GENESEE	45	86	88	219	60,020	12.2
NIAGARA	269	375	380	1,024	218,150	15.6
ORLEANS	42	55	35	132	43,629	10.1
WYOMING	22	38	36	96	42,932	7.5
REGION TOTAL	2,065	2,947	3,162	8,174	1,577,585	17.3
NEW YORK STATE TOTAL	58,505	61,991	66,944	187,440	19,190,115	32.6

Over a twelve year period from 1993 to 2004, the county's drug-related discharge rate per 100,000 residents, has varied from a high of 176.3 in 2004 to a low of 50.3 in 1993. The most recent three-year average is also the highest of the years shown.

Drug-Related Discharge Rate Per 100,000 Population

Year	Single Year	3-Year Average	Upstate New York
1993	50.3		171.6
1994	97.9	77.9	186.0
1995	85.6	89.7	188.1
1996	85.6	85.6	191.5
1997	85.5	90.6	170.6
1998	100.9	89.5	175.9
1999	82.1	94.7	158.5
2000	101.0	95.1	163.0
2001	102.4	98.6	150.8
2002	92.5	100.3	155.6
2003	106.1	124.9	180.2
2004	176.3		199.0

As the graph below shows, the three-year average has risen over the time period shown.



2g. Assault Hospitalization

Assault hospitalizations in Chautauqua County from 2002 through 2004 occurred at a three-year rate of 17.0 per 100,000 residents. This rate was below the regional rate of 28.5 and the state rate of 46.0. The rate in Chautauqua was the highest of the Southern Tier Counties, but was lower than four of the eight counties in western New York. These rates are based on small numbers and should be interpreted cautiously.

ASSAULT - DISCHARGE RATE PER 100,000 POPULATION
SOURCE: 2002-2002 SPARCS DATA AS OF SEPTEMBER, 2006

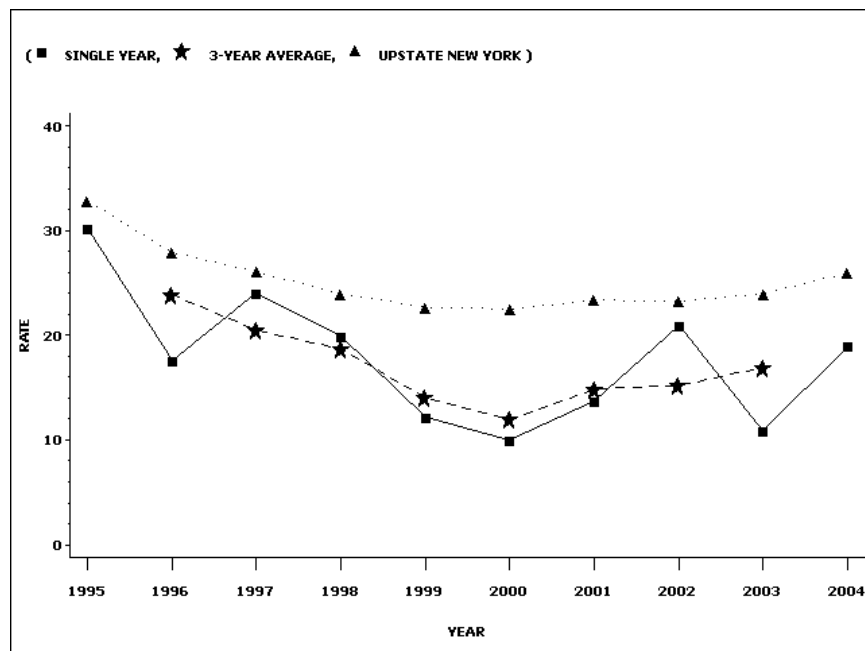
REGION/COUNTY	2002	2003	2004	TOTAL	2003	3-Year RATE
ALLEGANY	11	0	3	14	50,562	9.2
CATTARAUGUS	14	8	10	32	83,354	12.8
CHAUTAUQUA	29	15	26	70	137,645	17.0
ERIE	303	349	322	974	941,293	34.5
GENESEE	6	12	4	22	60,020	12.2
NIAGARA	44	69	62	175	218,150	26.7
ORLEANS	14	15	5	34	43,629	26.0
WYOMING	13	6	7	26	42,932	20.2
REGION TOTAL	434	474	438	1,347	1,577,585	28.5
NEW YORK STATE TOTAL	8,514	8,734	9,244	26,492	19,190,115	46.0

Over a twelve year period from 1993 to 2004, the county's rate has varied from a high of 31.5 in 1994 to a low of 10.0 in 2000. The 2004 rate of 18.9 is sixth lowest during the period. The most recent three-year average is fifth lowest of the ten three-year periods.

Assault Discharge Rate Per 100,000 Population

Year	Single Year	3-Year Average	Upstate New York
1993	22.4		38.4
1994	31.5	28.0	35.0
1995	30.2	26.4	32.8
1996	17.5	23.9	27.9
1997	24.0	20.5	26.1
1998	19.9	18.7	24.0
1999	12.1	14.0	22.7
2000	10.0	12.0	22.5
2001	13.7	14.9	23.4
2002	21.0	15.2	23.3
2003	10.9	16.9	24.0
2004	18.9		26.0

As the graph shows, the three-year rate of assault in Chautauqua County declined until 2000 and subsequently began to rise.



The New York Kids Count data below show rates of indicated child abuse and maltreatment for 2000 and 2004 in Chautauqua County and New York State.

Indicated Reports of Child Abuse and Maltreatment – Chautauqua County and New York State; number and percent of all reports made.

	2000		2004	
	#	Rate	#	Rate
Chautauqua County	680	33.2	602	32.3
New York State	45,941	31.7	43,175	30.4

(http://www.nyskwic.org/access_data/region_profile.cfm?countyID=36013&go.x=9&go.y=10)

B. UNMET NEEDS

While every person is at risk for injury, Health People 2010 points out that some groups appear to experience certain types of injuries more frequently, in particular American Indians and African Americans experience higher death rates from unintentional injuries. In addition, African American and Hispanic youth are more likely to be homicide victims. Suicide rates have been trending higher among all youth, and highest among Blacks. Finally, the death rate from injuries is higher among older persons. However Chautauqua County data breaking these categories down by sex are unavailable.

Unmet needs in the areas under consideration here are largely questions of prevention. In this regard, Health People 2010 notes several factors associated with evaluating unmet prevention needs:

First, unintentional injury comprises a group of complex problems involving many different sectors of society. No single force working alone can accomplish everything needed to reduce the number of injuries. Improved outcomes require the combined efforts of many fields, including health, education, transportation, law, engineering, and safety sciences. Second, many of the factors that cause unintentional injuries are closely associated with violent and abusive behavior...

Examples of general issues that impede the public health response to progress in the area of violence include the lack of comparable data sources, lack of standardized definitions and definitional issues, lack of resources to establish adequately consistent tracking systems, and lack of resources to fund promising prevention programs (<http://www.healthypeople.gov/Document/HTML/Volume2/15Injury.htm>).

The considerable variation seen over time among these data, both between and within categories, is cause for concern and attention.

The following table compares Chautauqua County 3-year (2002-2004) rates to Healthy People 2010 targets.

	Injury Targets		
	Deaths from Unintentional Injury	Traumatic Brain Injury	Homicides
Chautauqua County Rate	27.8	47.7	1.1
Healthy People 2010 Target (growth retardation among low income children < age 5)	17	45	3.0

A number of unmet preventive needs can be derived from these data and Healthy People 2001 observations.

- Reach 2010 targets for deaths from unintentional injury and traumatic brain injury
- Prevention efforts for unintentional injury in the under 10 population.
- Preventive efforts for all types of intentional injury.
- Increase resources to fund promising prevention programs
- Preventive efforts for subpopulations known to be at greater risk of intentional injury
- Greater attention to Improving outcomes by fostering the combined efforts of many fields, for example health, education, and law.
- Greater attention to resources for developing comparable data sources, standardized definitions tracking systems.

C. RESOURCES IN CHAUTAUQUA COUNTY

Injury control

- American Red Cross: water safety and lifeguard training; first aid, CPR, and AED courses; first responders course; babysitting course.
- Chautauqua County CASA Program
- Chautauqua County's four hospitals (WCA is the designated trauma center)
- Chautauqua County has 37 fire departments that provide ambulance service and levels of care ranging from Basic Life Support to Advanced EMT-Critical Care
- Fire Advisory Board
- Girl Scouts/Boy Scouts: water safety, first aid, CPR.
- Local Police Departments: crime injury prevention, DARE program, bicycle safety
- Office of the Aging
- Sheriff and State Police: police emergency services, dispatch for fire departments and medical services emergencies, navigation for Lakes Chautauqua and Erie. Administers DARE program-drug and alcohol awareness and education program for school students. Participates in the

Chautauqua County SALT (Seniors and Lawmen Together) program which includes the emergency blue light program as well as the RUOK monitoring system

- Traffic Safety Board
- YMCA Splash: program for children and families to learn about swimming and water safety

Suicide

- Crisis Services Counseling Hotline-800-724-0461
- Department of Mental Health: psychological testing, evaluation, and treatment services for adults and children
- Lakeshore Hospital: Psychiatric Unit
- National Suicide Prevention Lifeline-800-273-TALK
- School Counselors
- SUNY Fredonia and JCC Counseling Centers provide counseling and referrals
- Office of the Aging
- WCA Hospital: Psychiatric Unit

Traumatic Brain Injury

- Chautauqua County Resource Center: rehabilitation and respite care
- Local Police Departments: traffic law enforcement
- Neurologists
- Success by Six
- Trauma Center: WCA Hospital

Abuse and Neglect

- Agnes Home: shelter for victims of domestic violence
- Chautauqua County Domestic Violence/Rape Crisis Hotline: information, referral, advocacy (medical), counseling, court and hospital advocacy, and code management- Salvation Army
- Children and Family Outreach: addresses the therapeutic needs of children involved in families with domestic violence, child abuse or neglect issues-Salvation Army
- Crossroads, a domestic violence educational partnership of the JPD and YWCA. The project maintains victim follow-up in the city of Jamestown. It focuses on education and community awareness regarding domestic violence.
- Department of Social Services: abuse and neglect services
- Domestic Violence Rape Crisis Program
- Domestic violence support group- Salvation Army
- New York State Police
- Rape Aggression Defense Classes

- Sexual Assault Prevention Programs in Chautauqua County Schools

D. OPPORTUNITIES FOR ACTION

Opportunities for action related to injury and violence prevention are derived from Healthy People 2010 suggestions (<http://www.healthypeople.gov/Document/HTML/Volume2/15Injury.htm>) and Chautauqua County data and information.

- Increase understanding among service providers and funders of the value of effective prevention interventions.
- Identify subpopulations with greater risk of injuries and injury-related deaths of specific types so that specific intervention programs can be developed (e.g., suicide in the youth population).
- Identify subpopulations in which poverty, discrimination, lack of education, and lack of employment are risk factors for increased violence.
- Develop strategies to begin violence reduction and prevention early in life, before violent beliefs and behavioral patterns can be adopted.
- Utilize existing programs that provide parent training, mentoring, home visitation, and education to engage in violence prevention training.
- Implement ongoing evaluation of new and existing prevention programs to identify effective approaches.
- Foster a multidisciplinary approach to violence prevention that leverages local educational, academic, and community resources.
- Foster the inclusion of injury prevention programs in health education curricula at the appropriate grade level.
- Expand family planning programs for hard-to-serve populations, such as homeless persons, persons with disabilities, or substance abusers. Determine whether some hard-to-reach groups have more health problems than less disadvantaged family planning clients, and whether these health problems are confined only to family planning.
- Determine whether family planning agencies target their services (e.g., by age) or provide care to those who happened to seek it.
- Evaluate whether there are sufficient staff with appropriate language skills and cultural awareness in the community who also have adequate family planning skills and experience.
- Determine whether some racial and ethnic groups tend to visit a doctor only when they are sick and not to seek preventive services, including family planning.
- Ensure that all population groups have accurate information on STDs and reproductive health in general.
- Identify and provide rapid treatment of male partners of females testing positive for bacterial STDs not only to slow STD spread but also that of HIV.