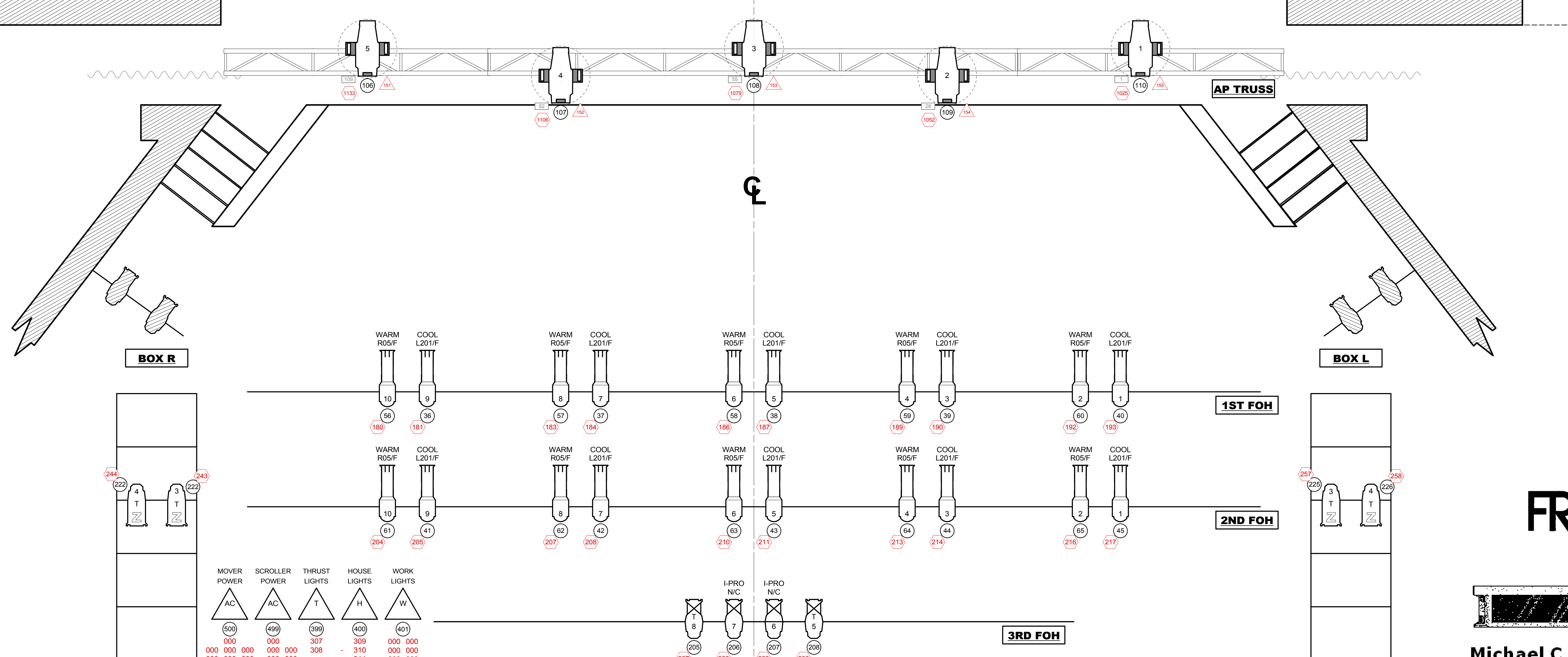
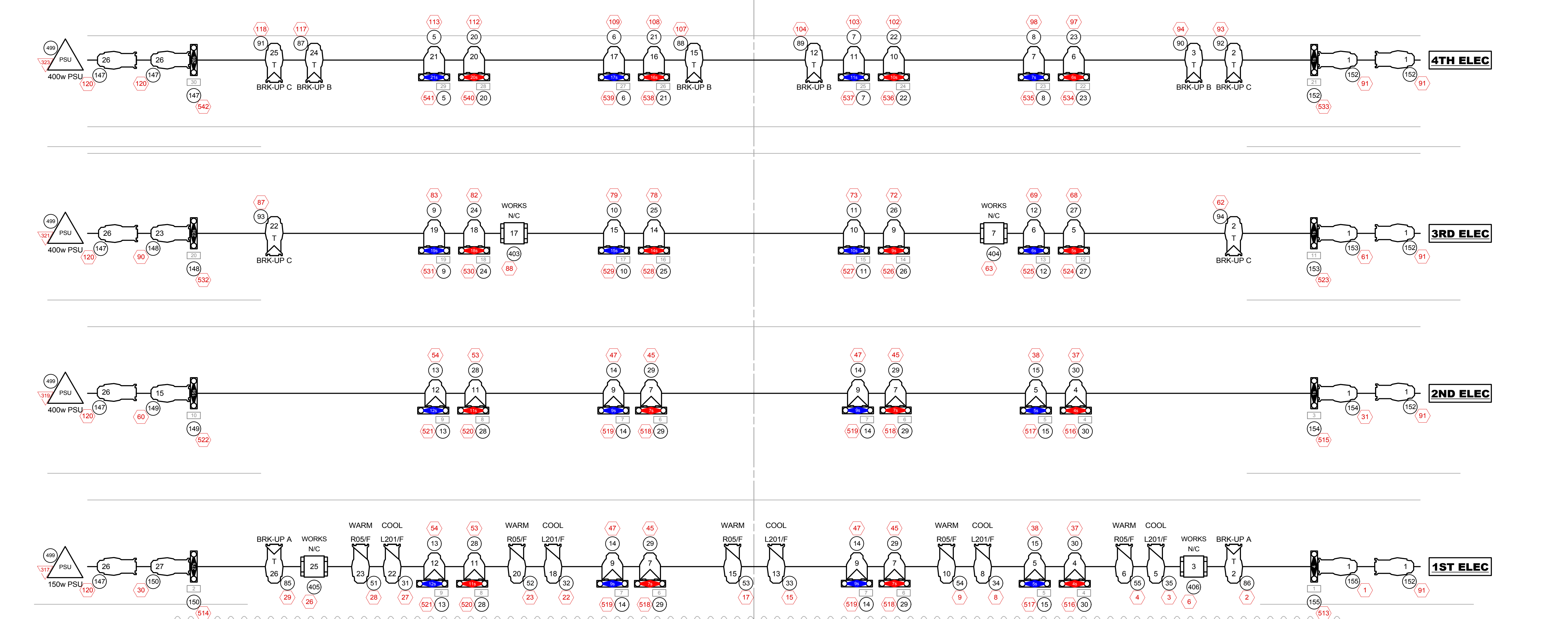


DOOR HEIGHT: 12' - 0"

STAIRS TO GRID  
GRID HEIGHT:  
57' - 11"

STAIR LANDING:  
+ 66"

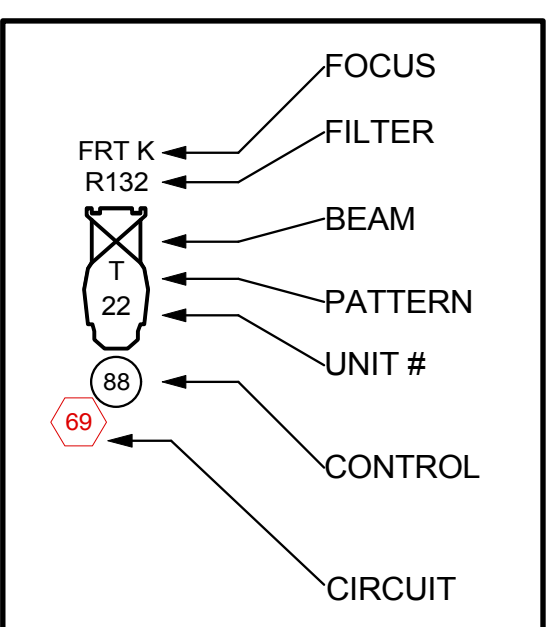
- 38 - SR SIDE PIPE
- 37 - SL SIDE PIPE
- 36 - BLUE CYC
- 35 -
- 34 -
- 33 -
- 32 -
- 31 -
- 30 - #5 ELECTRIC
- 29 -
- 28 - LEGS
- 27 - BORDER
- 26 - FULL BLACK
- 25 - #4 ELECTRIC
- 24 -
- 23 -
- 22 - LEGS
- 21 - BORDER
- 20 -
- 19 -
- 18 - #3 ELECTRIC
- 17 -
- 16 -
- 15 - LEGS
- 14 - BORDER
- 13 -
- 12 -
- 11 - #2 ELECTRIC
- 10 -
- 9 - LEGS
- 8 -
- 7 - BORDER
- 6 -
- 5 - #1 ELECTRIC
- 4 -
- 3 -
- 2 - LEGS
- 1 - MAIN RAG



MOVER POWER	SCROLLER POWER	THRUST LIGHTS	HOUSE LIGHTS	WORK LIGHTS
000	000	307	308	000
000	000	000	310	000
000	000	000	311	000
000	000	000	312	000
000	000	000	000	000
000	000	000	000	000

### LEGEND

- 10" S4 ERS, 750w
- 14" S4 ERS, 750w
- 19" S4 ERS, 750w
- 26" S4 ERS, 750w
- 36" S4 ERS, 750w
- 50" S4 ERS, 750w
- 25"-50" S4, 750w
- 15" 2112 ERS, 1kw
- 31" 2212 ERS, 1kw
- VNSP S4 PAR, 575w
- NSP S4 PAR, 575w
- MFL S4 PAR, 575w
- WFL S4 PAR, 575w
- Multi-Broad, 1kw
- ETC Revolution
- VL 1000TSD, 1kw
- VL 2500W, 750w
- PRACTICAL/ AC POWER
- ROTATOR
- DROP-IN IRIS
- IMAGE-PRO
- 7.5" APOLLO 07D
- 7.5" APOLLO 07T
- 7.5" APOLLO 04D



NOTES:  
ALL UNITS ON 18" CENTERS EXCEPT WHERE NOTED.  
TWO-FERS ARE NOT INDICATED ON PLOT. LOOK AT CHAN #  
MOVERS AND SCROLLERS AC ARE PAIRED & PATCHED TO 2X20A RELAY MODS.

Drawing by:  
CASEY NELLIS



Michael C. Rockefeller Arts Center  
www.fredonia.edu/rac

### LIGHT PLOT

DWG: 1 of 1  
OSFY/Kaleidoscope Rep  
Marvel Theatre, RAC  
SUNY-Fredonia, Fredonia, NY  
Eric Hailey, Operations Manager  
CN 9 SEPT 2008  
1/2" = 1'-0"