



**START-UP NY CAMPUS PLAN FOR DESIGNATION OF TAX-FREE AREA(S)**

Campus Name: Fredonia State University at New York  
Campus Contact Name: Kevin P. Kearns  
Campus Contact Title: Interim Provost and Vice President, Academic Affairs  
Campus Contact E-mail: Kevin.Kearns@fredonia.edu  
Campus Contact Phone: (716) 673-3758

**THE TAX-FREE NY AREA PLAN SHALL BE DEVELOPED BY THE CAMPUS TEAM AND PROVIDE THE FOLLOWING REQUIRED INFORMATION:**

- 1) Specification or identification of space or land proposed for designation as a Tax-Free NY Area identifying the following:
  - i. Provide the name and address of the SUNY, CUNY or community college seeking approval as a Sponsor, the address of the space or land proposed for designation as a Tax-Free NY Area, and a written description of the physical characteristics of the area for designation.

Name:	Fredonia
Campus Address:	SUNY Fredonia, 280 Central Avenue c/o Provosts Office 801 Maytum Hall Fredonia, NY 14063

Address(es) of Proposed Tax-Free NY Area(s) :

- 1) Fredonia Technology Incubator  
214 Central Avenue  
Dunkirk, NY 14048
- 2) Fredonia Campus  
280 Central Avenue  
Fredonia, NY 14063
- 3) Dunkirk Lakefront Property Parcel  
Dunkirk, NY 14048\*
- 4) 75 Bourne Street  
Westfield NY 14787
- 5) Hangar A  
3301 Turner Road  
Jamestown, NY 14701

Description of Physical Characteristics of Proposed Tax-Free NY Area(s):

Five properties are identified in the Fredonia Campus Plan: A) The Fredonia Technology Incubator in Dunkirk, NY; B) Vacant land (4.13 acres) on the Fredonia campus; C) A Dunkirk NY Lakefront parcel (1.86 acres) owned by the City of Dunkirk. The locations of these properties are shown in the map of Fredonia properties (Appendix E). D) The fourth property is located at 75 Bourne Street in Westfield. E) The fifth property is located 3301 Turner Road in the Town of Ellicott (Appendix F).

**A) Fredonia Technology Incubator (FTI) (ID# SU-105-1-B-0078-000-A)**

Location/Area

The Fredonia Technology Incubator (FTI) is located in the City of Dunkirk's Downtown Waterfront Business District. Dunkirk is adjacent to the Village of Fredonia, the home of the Fredonia Campus. An FTI map, photo, and floor plans are included in the appendices (A; A.1; A.2; A.3). FTI is a campus building and partner in the WNY Innovation Hot Spot (Appendix G).

Dunkirk is located along Lake Erie, 50 miles southwest of Buffalo. The city is easily accessible by Interstate 90, and the region offers timely connections to all major metropolitan areas in the Midwest, Eastern United States, and Canada. Dunkirk harbor provides open access to Lake Erie. The city offers lakefront marinas, accommodations, lakefront parks, and beaches.

An abundance of natural resources, workers, and technological support networks provide businesses with competitive opportunities for growth. Housing and commercial properties are diverse and affordable.

FTI Facility - FTI is a modern, energy-efficient, 22,000 sf LEED Silver building with both shared and private client space available for occupancy. High-speed internet and wireless connectivity are available throughout the facility. The Incubator includes a state-of-the-art smart classroom/boardroom that seats 50. In addition, there are two smaller conference rooms, one on each floor, that accommodate six. Three dry labs (no chemicals or heavy machinery) are also available for use on the second floor of the building. These labs are approximately 600-800 sf. Each of the dry labs includes sinks, storage, offices, etc. The restrooms include a shower. Both large (~420 sf) and small offices (~210 sf) are available for occupancy. Larger offices are interconnected for ready expansion into office suites.

#### **B) Fredonia Campus Property (ID #: SU-105-1-L-F.1.0-000-A)**

Fredonia State University of New York, established in 1826, is a four-year, residential liberal arts and sciences university that offers over 80 major and 40 minor academic undergraduate and graduate programs. Fredonia's few academic divisions are the College of Liberal Arts and Sciences, the College of Visual and Performing Arts, the College of Education, and the School of Business (Appendix E: Fredonia Properties).

The campus is located on approximately 250 acres in the historic village of Fredonia. All campus buildings have high-speed internet and wireless access. Current enrollment is approximately 5,300 undergraduate and graduate students. Although Fredonia is well known for its School of Music and its visual and performing arts programs, it is a comprehensive university with excellent programs in the sciences, humanities, business, and education.

The Fredonia College Lodge is owned and operated by the nonprofit Faculty Student Association (FSA). The Lodge ([www.collegelodge.com/About.aspx](http://www.collegelodge.com/About.aspx)), approximately 11 miles from campus in Brocton, NY, is situated on 200 scenic acres and includes a nature preserve and groomed trails for hiking and cross-

country skiing. Businesses affiliated with the university find the location ideal for workforce training, professional seminars, and social functions. The property includes a gathering hall for events (with catering kitchen) and a 90-bed sleeping lodge.

Vacant on-campus building space for public-private partnerships is currently very limited. However, the new Science Center, which opened in Fall 2014 provides an opportunity for enhancing research affiliations. The new Science Center added 57,415 net square feet to the campus inventory. Occupants of the Science Center includes the Departments of Biology, Chemistry, and Biochemistry, as well as faculty affiliated with Environmental Studies and Science Education programs. The Science Center has enhanced academic programs and provided a modern, collaborative environment for research.

Designated Fredonia Campus Property:

There are 4.13 acres of campus land being designated for development with partner businesses along the western border of campus (Appendix B: Fredonia Campus Property). According to our facilities planning staff, the property can accommodate two custom buildings - 45,000 – 60,000 sf each - on the designated campus land.

### **C) City of Dunkirk Lakefront Land ( ID# SU-105-2-L-D.1.0-000-A)**

A 1.86 acre waterfront parcel owned by the City of Dunkirk has been committed as an available property for the Fredonia Startup plan (Appendix D: Dunkirk Lakefront land map).

This parcel is located directly on Dunkirk Harbor within two blocks of the Fredonia Technology Incubator. The plot has 270 feet frontage on Route 5 - a major thoroughfare between Buffalo and Pennsylvania. It is adjacent to a marina, bicycle/ walking trails, a restaurant, and a Clarion Hotel. Significant investment has been committed for ongoing upgrades to the adjacent marina and sea wall improvements. This parcel provides an ideal opportunity for public-private partnership.

Fredonia has been closely affiliated with the City of Dunkirk for the past several years. We partnered on a HUD community revitalization grant that focused on economic development and revitalization. One of the outcomes of the grant was the development of several social entrepreneurship small businesses (e.g. Spoke Folk; Meals on Two Wheels). In addition, the director of the Fredonia Technology

Incubator serves on the Dunkirk Local Redevelopment Corporation (DLDC), and both the Mayor of Dunkirk and the Director of City Planning serve on the Fredonia StartUP committee. We have also collaborated on various other economic development initiatives including, for example, planning for the successful Great Lakes Experience festival on the Dunkirk waterfront which attracted approximately two thousand tourists to the area. The mayor and city council recognize the potential of our affiliation for further economic revitalization under StartUP New York.

**D) 75 Bourne St. Westfield (ID# SU-105-2-B-W.1.0-000-I)**

This property is included in the Fredonia plan through a three-way affiliation agreement between the Chautauqua County Industrial Development Agency, State University of New York at Fredonia, and the building owner (The Original Crunch Roll Factory, LLC).

75 Bourne Street is a 15,630sf vacant modern food grade production facility adaptable to a variety of food grade uses (Appendix H). This is due to its open floor plan, food grade finishes, and cooler and freezer space.

Offices are located at the front of the facility and there is a lobby and a reception area. The office area provides direct access to the manufacturing area which consists of production areas on the northern elevation and warehouse area on the southern elevation separated by a concrete demising firewall. The production areas comprise open expanses that can accommodate three production lines. The production area contains a recently erected freezer (20' x 24') at the northwest corner and a loading dock along the northern elevation. The warehouse area is an open expanse for the storage of raw materials and product with a cooler (20' x 30') that is accessible from the production area (Appendix H.2).

**E) 3301 Turner Road, Jamestown NY (ID# SU-105-1-B-0091-000-A)**

This property is owned by Chautauqua County. Hangar A is located in the Town of Ellicott in Chautauqua County. The hangar is a 25,400 sq. ft. metal building currently being used to store small aircraft. It is approximately 250 ft by 100 ft constructed with 18/22 gauge aluminum panels. The roof is metal with a painted coating on top. Walls are supported with metal stringers and support beams. The trusses are metal formed beams that span the entire width of the hangar. Wall panels are insulated with R 13 and in good condition. Water supply is not in the building at this time and Electrical is a single phase 200 amp panel. The foundation is reinforced concrete grade beam. The floor is concrete slab on grade and appears in good condition. There is a bi-fold overhead hangar door of

approximately 85 ft x 14 ft on South end of the building. The west wall has some damage due to heavy snow along the entire length of the building. Added support and metal repair for cracks is needed to strengthen the wall.

2) The total square footage of the space and/or acreage of land proposed for designation as a Tax-Free NY Area is:

<b>1. Building Space:</b> 63,030 sq. ft. total	
A) Fredonia Technology Incubator:	22,000 sq. ft.
D) 75 Bourne St. Westfield NY	15,630 sq. ft.
E) 3301 Turner Rd. Jamestown NY	25,400 sq. ft.
<b>2. Property:</b> 5.99 acres	
B) Fredonia campus property:	4.13 acres
C) Dunkirk NY Lakefront parcel:	1.86 acres

2a) *If applicable:* You may include here a description of any potential space or acreage of land that you may seek to designate as a Tax-Free NY Area under the START-UP NY Program in the future. This may include campus property that may become vacant, or other properties in your community that are not currently part of your campus but may be desirable for a company partner and with which you may consider an affiliation if an appropriate partner is identified. Do not include these properties in the Excel spreadsheet.

2b) *If applicable:* The total square footage of the space or acreage of land that you may propose to designate as a Tax-Free Area as identified in 2a, if known.



3) Provide a description of the type of business or businesses that may locate in the area identified in #1.

Fredonia is a residential, comprehensive liberal arts and sciences university noted for our School of Music and programs in the Visual and Performing Arts. Fredonia has long-standing and highly regarded programs in mathematics and the sciences. Students matriculate in Applied Mathematics, Biochemistry, Biology, Chemistry, Communication, Computer Science, Computer and Information Sciences, Geochemistry, Geology, Geophysics, Mathematics, Mathematics-Physics, and Molecular Genetics. In addition, strong complementary programs are also available through the School of Business: Finance, Management, Marketing, Accounting, and Economics. Excellent programs in the College of Education (Science Education), Social Sciences, and the Humanities are available to support local businesses.

Fredonia will be targeting four business clusters:

- 1) Agribusiness - including businesses that support the food processing industry (i.e. the supply chain).
- 2) Technology - particularly businesses related to visual arts, new media /social media, communication applications, and manufacturing/high-tech manufacturing.
- 3) Lake Erie research, development, and educational tourism business opportunities.

These clusters were identified through careful analysis of data provided by the Northern Chautauqua Community Foundation's Local Economic Development group (LED), the Western Regional Economic Development Council priorities, discussion with members of StartUp committee, community business leaders, and campus leaders.

These clusters were among the high-priority business clusters identified by LED. Their report, the Northern Chautauqua Regional Profile and Competitive Assessment ("Regional Profile," 2012), stresses, "the concentration of such entities in one area have the effect of enhancing competition by increasing productivity of associated companies, driving innovation and stimulating new businesses in the field ... such concentrations amass resources and competencies that give the geographic region or area a competitive advantage" ("Regional Profile," 37).

Fredonia's target business clusters support the academic mission and ongoing efforts to enhance academic programs. Attracting businesses in these areas will provide challenging, real-world curricular and co-curricular learning opportunities for students. The rationale for selecting these clusters was strongly influenced by Fredonia's academic strengths, faculty expertise, and desire to enhance students' classroom and experiential learning. Fredonia has a rich tradition of excellence in the arts and sciences, as well as education programs and business leadership. Strengths in the humanities and social sciences provide additional value for recruited businesses.

Fredonia emphasizes experiential education that includes significant laboratory coursework, independent research, and internships. The target business clusters will help us build and enhance core academic strengths, facilitate the development of interdisciplinary curricula, and broaden the number and types of internships, research opportunities, and experiential learning opportunities available to our students. In addition to fitting the Fredonia campus mission and goals, the target clusters align with the economic development goals of local business leaders, the County of Chautauqua Industrial Development Agency (CCIDA), the County of Chautauqua Division of Economic Development, the Chautauqua County Partnership for Economic Growth (CCPEG), Chamber of Commerce, and county and local municipalities.

### **1) Agribusinesses, including industries that support the food-processing industry (the supply chain)**

The Northern Chautauqua Community Foundation LED report "Regional Profile and Competitive Advantage" (2012) notes that while agribusiness is shared with counties throughout Upstate NY, Chautauqua County is the leader in agriculture related to grapes and other fruits. The report identifies the following major employers in this cluster: Cott Beverages, Nestle Purina Pet foods, Flavor's Inc., National Grape Cooperative (Welch's), Growers' Cooperative, Fieldbrook Foods, Double A Vineyards, Falcone Farms, and 23 independent wineries. The cumulative contribution of fruit and vegetable processing to Chautauqua County is around \$719 million annually. Local grape and fruit industry operations support 659 jobs that result in an economic impact of \$141 million annually. The annual retail value of juices and wines sold in the County is estimated to be over a \$100 million.

As the LED report points out, agribusiness in the county is driven by the availability of rich land and growing conditions, and businesses are also attracted to the region's easy access to Interstate 90 and rail service, providing overnight access to over 40% of the U.S. population. The region is within driving distance (~ 500 miles) of major markets, including Buffalo, Toronto, Cleveland, Pittsburgh, Detroit, New York City, Philadelphia, Montreal, Boston, Washington, DC, and Chicago. (Buffalo Niagara Enterprise 2013 Economic Guide).



The opportunity to recruit businesses in this cluster comes, in part, from the clear strength of agribusiness which is the primary engine for the local economy. However, there is an opportunity to work collaboratively with these businesses, particularly the food processors in the area, to attract suppliers who provide packaging and other materials for their products and distribution. There is an opportunity for supply chain business relocations in support of regional food-processing businesses.

We are engaged in ongoing discussions with an out-of-state company regarding the development of a large warehouse complex in neighboring Dunkirk NY that will include both cold and dry storage capacity. Local food processors currently truck their products to Pennsylvania and other locations for storage since there is not sufficient storage in the Dunkirk-Fredonia area. The transportation and storage of products has a substantial financial impact on major food processors. In addition, while the number of jobs created for local warehousing would provide a significant boost to the local economy, the long-term potential for job creation resulting from related initiatives is potentially even more significant. This project, which will be built on the site of a former brown field, has received support from the IDA and the City of Dunkirk.

Similarly, a Canadian company specializing in LED lighting and solar energy has relocated an office to Dunkirk at the Fredonia Technology Incubator. They are in contact with the principals involved in the warehouse project to explore the feasibility of providing light and heat options for the project. If negotiations are successful, they may bring office and manufacturing operations to the area.

## **2) Technology, Manufacturing/ High Tech Manufacturing cluster**

Fredonia has attracted several business startups to the Fredonia Technology Incubator (FTI) that fit into this cluster. They will help support and attract larger companies and create a synergy with Fredonia's well-known academic programs in music, communication, and the performing arts. Businesses that allow us to scaffold our academic strengths while enhancing our academic mission are essential to our success. Businesses that align with community economic development organizations like the County of Chautauqua Industrial Development Agency (CCIDA), the County of Chautauqua Division of Economic Development, and the Chautauqua County Partnership for Economic Growth (CCPEG), Chautauqua County Chamber of Commerce (CCCC) and Manufacturing Association of the Southern Tier (MAST) are of key importance.

FTI has attracted businesses such as Venture Productions, Lake Arts, and Orbitist. These businesses complement one another and will attract other businesses in our technology/media cluster. Venture Productions is a full service provider of highly innovative entertainment that is

original and affordable. They also provide high quality dramatic education for all ages. Similarly, Lake Arts is involved in original creative productions for film and theatre, and Arc Atlas is a music production company. Orbitist has developed a mapping and storytelling app that is being used by nonprofit and government agencies. In general, the FTI small-business climate is rich for attracting technology businesses in the visual arts and new social media cluster, including computer gaming companies.

Fredonia's Computer and Information Sciences (CIS) department has worked with local businesses and Incubator clients on a variety of media-related technology issues. They have, for example, offered new coursework (Ruby On Rails) to support Incubator businesses. CIS faculty expertise is available to assist in business areas such as database design, computer programming, software engineering and development, systems analysis, and project management.

**Industrial Management --** The Industrial Management program is an integrated multidisciplinary curriculum combining courses from physics, business/economics, mathematics/computer science, social sciences/humanities, and courses in supporting elective subjects that can enhance career objectives. The program provides for early development of written and oral communications skills, and these are used consistently throughout the entire curriculum. In addition, a College approved field experience is required under the supervision of both a faculty and industrial sponsor following the completion of either the sophomore or junior year. This program prepares students for careers such as managing technical personnel; administration between the engineering staff and the rest of the technical workforce; service, production, sales, quality control, and cost effectiveness of automation; serving as a liaison between the technical and business components of a company; and graduate studies either in business, applied science, or related areas.

This program has historically had low enrollments but it is being targeted for expansion. Future growth will, in part, rely on partnerships with traditional and high tech manufacturing and businesses that align with community economic development organizations like the County of Chautauqua Industrial Development Agency (CCIDA), Chautauqua County Partnership for Economic Growth (CCPEG), Chautauqua County Chamber of Commerce (CCCC), and Manufacturing Association of the Southern Tier (MAST).

Fredonia's renowned programs in music, arts, creative writing, and communication are available to support a media-based technology cluster. The Communication department offers a comprehensive program that includes majors in audio, video, communication studies, journalism, media management, and public relations. In addition, our programs in Music and the Performing Arts are enhanced by programs in Business Administration/Music Industry, Music/Sound Recording Technology, Visual Arts/New Media, Graphic Design, Photography, and Videography. The state-of-the-art Sound Recording Technology facilities range from labs and workshop spaces to technologically advanced studios and live rooms, and booths that rival the best in the nation. The University boasts two state of the art music technology labs, equipped with 30 Apple iMac Computers, each connected to an XP-30 multi-timbral synthesizer.

### **3) Lake Erie Research, Development and Educational Tourism**

A key to the economic revitalization of the Chautauqua region is to support and attract businesses to New York State's most precious natural resource, the Great Lakes. The Great Lakes, the largest body of fresh water in the world, are a major economic engine for communities around them. Fredonia is located approximately one mile from Dunkirk harbor, arguably the best open-water access on Lake Erie. As noted previously, the Fredonia Technology Incubator is located within two blocks of Dunkirk harbor.

#### **a) Lake Erie Research and Development**

The LED Regional Profile report notes that Lake Erie is being threatened by record algae bloom, an infestation of quagga and zebra mussels, and unprecedented pollutants. One indicator of the cumulative economic impact of these challenges is apparent in the U.S. The U.S. Fish and Wildlife Service estimated a \$5 billion impact on Great Lakes commercial fishing industry over the past five years alone. A concerted effort must be made to address the issues that are negatively impacting the Great Lakes and the regional economy.

There is currently little development along key areas on Lake Erie, including the Dunkirk and Barcelona harbors. Recognizing the essential balance between environmental concerns and appropriate commercialization, there is a pressing need to attract research and development that will contribute to the health of the Great Lakes and a vibrant local economy.

Fredonia faculty members have expertise in aquatic microbiology, airborne contaminant chemistry, trophic pathways in organic pollutants, groundwater geophysics, environmental physiology of aquatic mussels, and groundbreaking research on plastics pollution in the Great Lakes. The university recently hired a new aquatic biologist/limnologist who has done extensive work on lake ecology. Her work focuses on ecological interactions between climate change and lake habitats. Existing degree programs that support aquatic research and development include those in biology, chemistry, biochemistry, and geosciences. Faculty members in geosciences are developing projects in lake sedimentology, oceanography, and physical limnology. Programs in public relations, journalism, marketing, economics, communication, science education, and business administration stand ready to develop field experiences and internships with new businesses attracted in this cluster.

While plastic pollution has been an area of scientific research in the oceans for the past 10-15 years, Fredonia researchers were the first to investigate this issue in the Great Lakes. Dr. Sherri Mason has found that samples taken from Lake Erie show concentrations of microplastics higher than any oceanic sample ever recorded (see

<http://www.nytimes.com/2013/12/15/us/scientists-turn-their-gaze-toward-tiny-threats-to->

[great-lakes.html](#)). The size of the plastic particles allows for easy ingestion by aquatic organisms, providing a new way for POPs to move into the food web.

This Lake Erie research and development cluster fits well with the StartUp NY program. Fredonia's adjacency to Lake Erie provides companies access to marine-based starting materials, as well as industrial connections for end-product users of bio-resins. Great Lakes research, harvesting, and industrialization opportunities clearly establish the potential for job creation and workforce development in this cluster.

#### **b) Lake Erie Educational Tourism**

Although traditional hospitality and real estate businesses are prohibited under StartUp NY, we are committed to recruiting and fostering educational tourism. Tourism is the fifth largest employer in NYS, and this sector generated \$6.5 billion in state and local taxes in 2010. Capitalizing on the opportunities presented by New York's 84 miles of Lake Erie shoreline is key to the economic recovery of the upstate region. According to the 2011 University of Michigan report "*Vital to our Nation's Economy: Great Lakes Jobs*", Lake Erie conservatively supports 157,547 New York jobs.

The report further asserts: "Water is a huge draw for people – coastal trails, clean beaches, and waterfront businesses add tremendous value to both metropolitan and semi-rural areas. In this new economic era, growth will be less linked to traditional manufacturing and more focused on quality of life and quality of the region's natural resources. Unless we protect and restore our best environmental asset – the Great Lakes – we will not be able to retain and attract strong new businesses and great human resources."<sup>1</sup> The report states further that 14% of Great Lakes jobs relate directly to tourism. Our goal is to attract educational tourism to augment ongoing efforts to enhance tourism and ecotourism in our region.

There are few in-state educational attractions west of Buffalo, and an educational museum featuring Great Lakes exhibits would draw significant tourism dollars to the local economy. There have been ongoing discussions about the feasibility of developing a local museum that focuses on the history and issues relating to the Great Lakes. An appropriate and unique lakes museum would stimulate regional economic revitalization and job growth through tourism, stimulate training for new STEM graduates, and significantly increase research and academic collaboration between Fredonia, other colleges and universities, and federal and state agencies. We are not, of course, targeting businesses that are prohibited pursuant to §220.6 of the StartUp regulations such as traditional hospitality businesses. Rather, we are seeking public-private partnerships that will develop, for example, an interactive museum that will educate

---

<sup>1</sup> <http://www.fws.gov/gleri/documents/11-203-Great-Lakes-Jobs-report%5B1%5D.pdf>

children and adults on fresh water issues that impact the quality of life and economic vitality of our area. An aquatics museum, or similar educational tourist attraction, would provide a catalyst for coalescing local, state, and federal resources as a stimulus for regional economic development. Dunkirk Harbor restoration has been identified as a WNY Regional Economic Development priority, and the harbor is the site of significant private investment.

- 4) Provide a description of the campus academic mission, and explain how the businesses identified in #3 will align or further the academic mission of the university or college.

**Mission:** Fredonia is a four-year, residential, comprehensive liberal arts and sciences college. The recently revised mission statement reflects the goals for all students: “Fredonia educates, challenges, and inspires students to become skilled, connected, creative, and responsible global citizens and professionals. The university enriches the world through scholarship, artistic expression, community engagement, and entrepreneurship”.

Fredonia emphasizes community engagement and entrepreneurship to enhance student learning and create better communities. The Fredonia Technology Incubator was built in Dunkirk to stimulate economic recovery in the city and surrounding area. The mission of the Incubator is to nurture and support startup businesses that will, at maturity, create jobs in the region. The campus is also committed to providing real-world experiences for students through internships and structured interactions entrepreneurs. Ultimately, we strive to contribute to a vibrant regional economy that will attract and retain Fredonia graduates.

**Alignment/ Enhancement of Mission:** The campus vetting process for StartUp will ensure alignment of businesses with the campus mission. The intake process will evaluate how well businesses fit Fredonia values and strategic directions. The Fredonia StartUp NY committee, with participation from the broader community, will evaluate the strength and breadth of applicants’ commitment to the campus and region. Consultation with relevant stakeholders - including business and community leaders, university administrators, faculty, staff, governance, and union representatives - will strengthen the intake process.

StartUp businesses must be aligned with Fredonia’s in the following areas:

**1. Support for undergraduate, graduate, and professional education:**

Businesses must demonstrate a willingness to participate in formal and informal instruction. This may include classroom and co-curricular teaching, lectures, demonstrations, and contributions to course and curricular development. Other means of sharing expertise with faculty and students will also be a way for businesses

to contribute to the learning environment. Alignment with a particular academic program, while desirable, may not be necessary, a business can show its ability to contribute in other areas.

Businesses that fund scholarships, campus facilities or other academic services or amenities will be valued and recruited.

## **2. Research:**

Support for the university's research mission may be demonstrated through research collaborations, student involvement in business research and development, support for acquiring research equipment, and funding for faculty and/or student research. Alignment with our faculty research and scholarship are important.

The ability to provide research instrumentation, tools, and/or equipment necessary to advance academic and research mission will be evaluated in our screening of applicant companies.

## **3. Leadership:**

Businesses may contribute to Fredonia's leadership goals by providing training and/or experiential learning activities for faculty, staff, and students, participating in university leadership training, and providing financial support for leadership development and training.

## **4. Diversity/Culture:**

Supporting Fredonia's mission means valuing experiences that lead to greater cultural competency. Businesses can contribute by committing to hire a diverse workforce and supporting cultural awareness and sensitivity in the community. Support for scholarships and programs that offer opportunities for all students to succeed is especially welcome, as is support for global connections and study abroad opportunities.

## **5. Regional economic development:**

Fredonia hopes to partner with companies that create jobs that match local workforce needs, support local and regional economic development and job training programs, participate in groups that target job growth and regional economic vitality, and purchase materials and products locally.

Efforts that enhance the entrepreneurial culture and support university initiatives (such as the Fredonia Technology Incubator) will also be especially welcome.

**6. Internship and training opportunities:**

Businesses may demonstrate their alignment with our mission by providing internships, integrating classroom and internship experiences, and enhancing student learning through structured observations and participation in business activities.

**7. Job opportunities for campus graduates:**

Applicant businesses should specify the anticipated number and types of jobs that will become available.

A willingness to work closely with Fredonia faculty and staff, especially the Career Development Office, to facilitate a mutual understanding of the knowledge, skills, and abilities needed to prepare students for graduation and employment will be highly valued.

**8. Internationalization:**

Alignment with Fredonia's goal of preparing responsible global citizens may be demonstrated by providing support for international travel, hosting international visitors, and providing opportunities for students to learn about a company's international business practices.

**9. Other methods of supporting our academic mission:**

Businesses may contribute to Fredonia's academic mission in other ways that enhance the learning community. They may, for example, provide support for the creative and performing arts, sponsor activities that enhance quality of life on campus and in the community, and support programs in local schools and service agencies.

5) Provide a description of how participation by these types of businesses in the START -UP NY Program will generate positive **Community and Economic Benefits**:

Chautauqua County, which includes the Village of Fredonia and the city of Dunkirk, NY, has been ravaged by job loss, out migration, and extensive, long-term poverty. The Dunkirk School District has the highest poverty rate in the county, the fifth highest in western NYS, and was recently ranked 420 out of 429 public school districts in all of Upstate New York by *Business First* for its academic performance. The 2010 Census cited a 4.9 percent decline in the overall population of Chautauqua County from 2000, with the 25 – 34 year age group showing a 33.1 percent decrease, resulting in the median age increase from 34.3 years in 1990 to 40.9 years in 2010. According to the Chautauqua County Department of Planning an Economic Development the decline in younger populations “could lead to difficulties in attracting or a decline in the future area workforce. This, in turn, could make the attraction and retention of businesses more difficult. Further declines in the ‘preschool’ and ‘school age’ age groups may urge education officials to seriously consider merging schools. Having seen a decline in the young population of Chautauqua County already, some concerns may be raised about the county's ability to retain and attract young persons to live and work here.”

According to data cited by the county IDA, Chautauqua County is home to approximately 53,000 jobs and lost about 4,500 jobs over the last ten years, a decrease of about 8%. At the same time, the Western New York Region added jobs at a rate of 2% while New York State added jobs at a rate of 12%.

Based on 2019 employment figures, Manufacturing is 2.14 times more concentrated in Chautauqua County relative to the rest of the country. It comprises 17% of total jobs in the county and contributes to about a quarter of the county's total Gross Regional Product, the single largest proportion out of any industry. This concentration of industry presents opportunities to build on. Yet, as the manufacturing industry continues to evolve, further downturns in the industry would have significant ramifications on the entire county's economic activity. Continuing to innovate manufacturing production, meeting the latest market demand and ensuring that producers have access to quality workforce to be productive is vital to the future of the county's economy.

The StartUp program represents a significant opportunity to attract businesses that can help reverse the decades-long economic decline in Northern Chautauqua County. We anticipate the following community benefits from the types of businesses that we are targeting for the program: increased employment opportunities, increased opportunities for experiential learning for students, diversification of the local economy, environmental sustainability, increased entrepreneurship opportunities,



uphold history of manufacturing sector, positive, non-competitive, synergistic links to existing businesses, positive impact on the local economy.

### **1. Increased employment opportunities:**

According to the US Bureau of Labor Statistics and the NYS Department of Labor, Chautauqua County experienced an 8.3% decline in total jobs between 2000 and 2010, with a 32% decline in the manufacturing sector during the same period. The bleak employment prospects was recently underscored by the announcement that Conagra (Carriage House) closed their food processing operations in the Dunkirk-Fredonia area with a resultant loss of over 400 jobs. Overall, an average of 64,200 individuals was employed in Chautauqua County in 2000, and that number has declined to 56,800 in 2013.

Given our recent loss of jobs and the availability of skilled and experienced workers who are currently unemployed or underemployed, we will strongly support prospective businesses and manufacturers that recruit employees from the local workforce. Relatedly, those businesses that, like Fredonia, attempt to purchase supplies locally and regionally will be valued.

Companies in Fredonia's targeted business clusters will only be sponsored by the college if the application demonstrates a strong potential for net new jobs. We will also assess the viability of businesses in both the short and long term and those that are sustainable will be supported.

### **2. Increased opportunities for internships, vocational training, and experiential learning for undergraduate and graduate study:**

As noted above, businesses can demonstrate their alignment with our mission by providing internships, integrating classroom and internship experiences, and enhancing student learning through structured observations and participation in business activities. Our Power of Fredonia Strategic Plan emphasizes the centrality of experiential learning and community engagement, and StartUP businesses will facilitate our ability to provide real world educational opportunities for our students.

### **3. Diversification of the local economy:**

The decline of our local economy is directly related to an historical overreliance on jobs in the manufacturing and agriculture areas. The Fredonia StartUP plan business clusters will build on the success of FTI and our renowned academic programs to help attract technology businesses that utilize faculty expertise in

the visual arts and new media; and modern, high tech and specialty manufacturing.

Similarly, by capitalizing on our proximity to Lake Erie and other natural assets in the community, as well as our expertise in the sciences, our Great Lakes cluster will also help to diversify our regional economy.

#### **4. Environmental sustainability:**

Our Lake Erie research and research and development cluster directly targets issues relating to environmental sustainability. This StartUP direction supports Fredonia's commitment to sustainability, which is outlined in the Power of Fredonia strategic plan (see PP. 13-15, above). Existing degree programs that support aquatic research and development include those in biology, chemistry, biochemistry, and geosciences. Faculty in geosciences is developing projects in lake sedimentology, oceanography, and physical limnology. Finally, as mentioned above, we are in discussions with environmentally responsible businesses in areas such as those involved in production of biodegradable plastics, anaerobic digestion of food waste, and solar energy.

#### **5. Increased entrepreneurship opportunities:**

Fredonia has invested in the development and support of the Fredonia Technology Incubator, and created a new division of Engagement and Economic Development to support the growth of entrepreneurship opportunities for our students and in the community.

In support of our StartUP efforts we house the Chautauqua Co. IDA, including the executive Director and its economic planning staff, in FTI. In addition, FTI held its first annual student business competition in the fall. Professor Susan McNamara, who teaches entrepreneurship at Fredonia, is a member of our StartUp committee. Finally, we are developing student internships that foster entrepreneurship, and we anticipate that our StartUP businesses will provide additional opportunities for experiential learning and exposure to real world entrepreneurs. Thirty students participated in internships and other experiential learning opportunities at the FTI and with our incubator clients during the past academic year.

#### **6. Positive, non-competitive and/or synergistic links to existing businesses:**

The StartUp legislation prohibits sponsorship of companies that compete with existing businesses. In addition, we are actively recruiting businesses that build

on existing business opportunities in agribusiness, technology, manufacturing, high tech manufacturing, video production, and the visual and performing arts, aquatics research, and companies that support and enhance Fredonia's mission.

These business clusters were selected precisely because they build on existing strengths at the university and in our business community. Support of the local community and municipalities is essential, and the level of commitment to and investment in our underserved, economically distressed area will be critically evaluated.

### **7. Effect on the local economy:**

The decline in population in Chautauqua County is reflective of the sparse job opportunities in the County and the region: The net out-migration rate for all ages in Chautauqua County is -6.07%, a staggering figure when compared to the NYS rate of 1.86%, a figure largely attributed to the lack of job opportunities in the region. However, another figure not yet updated for the 2010 Census is also staggering: a US Census report released in 2004 reported the Jamestown-Dunkirk-Fredonia Metropolitan Statistical Area, formerly the Jamestown Metropolitan Statistical Area (MSA). Chautauqua County, had the greatest out-migration rate for the 'Young, Single, and College Educated' in NYS (-344.8 compared to NYS -11.3); nationally this represented the 34th highest net out-migration rate for this population out of the 198 MSA's experiencing negative growth. The decline in population in Chautauqua County reflects the startling lack of job prospects in the County and the region.

The StartUP program provides the incentives needed to attract net new jobs to our region, which has been devastated by job loss. Every job that we are able to retain, grow, or recruit into our region will have an immediate positive impact on our economy. Based on labor force comparisons for Chautauqua County (Jamestown-Dunkirk-Fredonia micropolitan statistical area) and the Buffalo Niagara Region, the creation of 100 jobs in Chautauqua Co. is equivalent to creating nearly 1,000 jobs in the Buffalo – Niagara region. Obviously, if the Fredonia StartUP program is moderately successful it will significantly impact our local economy.

Businesses that are critical to the local economy and have the potential to facilitate additional job growth will be evaluated highly. Similarly, those that invest in the community, including capital investment, are particularly desirable. We will also evaluate potential financial benefits to the University as we determine how strongly we support an applicant business.

**8. Opportunities as a magnet for economic and social growth:**

As one of the largest employers in the county Fredonia is vital to the local economy. According to an independent study of the university's economic impacts, Fredonia has an estimated impact of \$330.81 million statewide and \$204.36 million in the Western New York region. Importantly, the university's economic impact in the local Dunkirk-Fredonia area is approximately \$157.02 million. The college also serves as the hub of social and cultural activities in the area.

Given that businesses accepted into the Fredonia program must support our mission, new businesses attracted through StartUP NY will enhance our social and economic centrality and impact. In addition to providing much needed jobs, our partner companies will support our mission and enhance academic programs and student learning in the visual and performing arts, business, and the natural and social sciences. In addition, contributions to our public programs will also enhance the quality of life in our community.

- 5) Provide a description of the process the Sponsor (campus) will follow to select participating businesses. The description should identify the membership of any group or committee that may make recommendations, the final decision-maker, and the criteria that will be used to make decisions. This group or committee must include representation from faculty governance.

**StartUp NY Committee:**

Fredonia's StartUp NY Committee has been charged with developing an objective vetting process for rating business proposals submitted for the StartUP NY program. The committee serves in an advisory capacity to the President and Cabinet. The

Interim Provost and Vice President Academic Affairs chairs the committee. Other members of the Fredonia StartUP NY Committee include:

Fredonia VP for University Advancement or representative  
Fredonia VP for Finance and Administration  
Director of the Fredonia Technology Incubator  
Director of Fredonia Facilities Planning  
Asst. Professor of Business Administration - Entrepreneurship  
Fredonia United University Professionals representative  
Dean/ Director of the School of Business or appointee  
Fredonia Univ. Senate representative  
Director of Chautauqua County Industrial Development Agency  
Chair of the Local Economic Development (LED) group of the Northern Chautauqua Community Foundation  
Fredonia College Council representative; community member  
Manufacturing Association of the Southern Tier (MAST) representative  
Mayor, City of Dunkirk or representative  
Mayor, Village of Fredonia or representative  
State Sen. George Borello, or representative  
City of Dunkirk Director of Planning & Development  
Fredonia Student representative

The Committee has reviewed program guidelines, examined opportunities for business development, discussed clusters of businesses that align with the university, and established a process for reviewing proposals. Consistent with the StartUp NY business application process, prospective businesses must demonstrate financial stability, a plan for creating jobs, and fit with the campus and community. Proposals are evaluated for alignment with Fredonia's Academic and Research mission, Economic Benefits, and Community Benefits.

The following criteria will be used to judge StartUp business applications:

**A. Academic and Research Alignment**

1. Is the business in an industry aligned with current and/or developing University research, scholarly, and creative activity?
2. Does the business provide experiential learning and workforce opportunities (e.g., internships, fellowships, full-time jobs) for students and graduates?

3. Does the business provide areas for partnership and advancement for faculty and students?
4. Will the business provide access to research instrumentation, tools, and/or equipment necessary to advance the academic and research mission?
5. Will the business fund scholarships, campus facilities or other academic services or amenities?
6. Will the business and/or its employees contribute to instruction or provide student mentoring?
7. Does the business offer the use of company resources, intellectual property or expertise to support the academic mission?

**B. Economic Benefit**

1. How many net new jobs will be created?
2. Is the business viable in both the short- and long-term?
3. Will the business attract private financial investment?
4. Does the business plan to make capital investments (e.g., renovation, new construction)?
5. Are the new jobs in critical areas of the economy?
6. How will the University financially benefit from the terms of the lease?

**C. Community Benefits**

1. Does the business have the support of one or more municipal or community entities?
2. Is the business recruiting employees from the local workforce?
3. Does the business invest in underserved, economically distressed regions?
4. Will the business rely on suppliers within the local and regional economy?

Based on these criteria, committee members will rate the strength of each

applicant business. Not all criteria need be addressed by each applicant. Rather, a strong commitment to one or more factors, may, in some instances be sufficient to result in an endorsement. Each proposal will be read, critiqued, and rated by assigned lead reviewers. Lead reviewers from the committee will be asked to assign an overall rating of from 1 (low level of support) to 5 (high level of support). All committee members will be asked to read and be prepared to discuss each proposal.

Following the group discussion, the business proposals receive an overall rating indicating: a) Strong support; b) Support with minor reservations; c) Insufficient information available; d) Not appropriate/not recommended. Committee ratings, and a summary of member's comments, will be presented to the President and her cabinet for input and further discussion. (The Cabinet includes the President and the Vice Presidents for Engagement and Economic Development, Academic Affairs and Provost, Student Affairs, Finance and Administration, and University Advancement.) The President will make the final decision regarding whether or not to endorse an application. The results of the president's decision will be communicated to the applicants by the chair of the StartUp committee, the Vice President for Engagement and Economic Development.

## **7) Distribution of draft Campus Plan to interested parties.**

The Fredonia StartUP Committee includes broad representation from the campus and community, and the campus plan has been widely distributed and discussed. The mayors of the Village of Fredonia and the City of Dunkirk, the Director of Chautauqua County IDA, and a representative from our State Senator's office are active members of our StartUP committee. Committee members have shared drafts of the plan with their constituents, and their feedback has been incorporated. In addition, the campus plan has been discussed with the Local Economic Development group of the Northern Chautauqua Community Foundation, the County Executive, local business leaders, the Fredonia Rotary International, and the Lions Club.

The revised campus plan was also presented and discussed in meetings of the Fredonia Technology Incubator Board of Directors, which include representatives from the local business community. The original Fredonia plan was presented and discussed at two open community forums at different locations across Chautauqua County. A handout was distributed at these community forums. An updated version is attached (Appendix F; Fredonia Campus Plan Handout). The purpose of the Fredonia Campus Plan

Handout is to provide a summary of the plan to constituents in the community and on campus, and to generate interest in the StartUp NY program.

The revised Fredonia Plan has also been widely distributed and discussed on campus. The StartUP Committee includes members from the School of Business, the University, and the College Council. The draft plan was shared with University Senate Executive Committee, the Senate Planning and Budget Committee, and campus union leadership. The University Senate Chair distributed the Campus Plan to faculty and staff representatives on the Senate. Student leaders also had an opportunity to review and discuss the plan at a meeting of the Student Cabinet.

A copy of the revised Fredonia plan was emailed to the following individuals with a request for feedback: the co-chairs of our faculty Planning and Budget committee, the mayors of the City of, the Village of Fredonia, and the Village of Westfield, the Town of Ellicott, Chief Executive Officer of the County of Chautauqua Industrial Development Agency (CCIDA) and Director of the Chautauqua County Department of Planning and Economic Development (CCPED), the Chair and executive committee of the Fredonia University Senate, and the presidents of Fredonia's UUP, CSEA, and University Police unions, and the president of the Student Association. In addition, the revised plan was shared with the Fredonia College Council and members of the Fredonia College Foundation. Our draft plan has also been posted on our website for university and community input <https://www.fredonia.edu/about/offices/university-engagement/startup-ny>

The President and Cabinet have also been involved in the development of the Fredonia campus plan. The Vice President for Finance and Administration and the interim Vice President for University Advancement are members of the Fredonia StartUp Committee. In addition, the revised campus plan was discussed at the President's Cabinet, and StartUp NY updates are given by the VP for Engagement and Economic Development at weekly meetings of the president's Cabinet.

## Enclosures:

- 1.) POL§74
- 2.) SUNY Conflict of Interest Policy
- 3.) RF Conflict of Interest Policy



# PUBLIC OFFICERS LAW

## § 74. Code of ethics.

**1. Definition.** As used in this section: The term "**state agency**" shall mean any state department, or division, board, commission, or bureau of any state department or any public benefit corporation or public authority at least one of whose members is appointed by the governor or corporations closely affiliated with specific state agencies as defined by paragraph (d) of subdivision five of section fifty-three-a of the finance law or their successors.

The term "**legislative employee**" shall mean any officer or employee of the legislature but it shall not include members of the legislature.

**2. Rule with respect to conflicts of interest.** No officer or employee of a state agency, member of the legislature or legislative employee should have any interest, financial or otherwise, direct or indirect, or engage in any business or transaction or professional activity or incur any obligation of any nature, which is in substantial conflict with the proper discharge of his duties in the public interest.

### **3. Standards.**

- a. No officer or employee of a state agency, member of the legislature or legislative employee should accept other employment which will impair his independence of judgment in the exercise of his official duties.
  - b. No officer or employee of a state agency, member of the legislature or legislative employee should accept employment or engage in any business or professional activity which will require him to disclose confidential information which he by reason of his official position or authority.
  - c. No officer or employee of a state agency, member of the legislature or legislative employee should disclose confidential information acquired by him in the course of his official duties nor use such information to further his personal interests.
  - d. No officer or employee of a state agency, member of the legislature or legislative employee should use or attempt to use his or her official position to secure unwarranted privileges or exemptions for himself or herself or
-

others, including but not limited to, the misappropriation to himself, herself or to others of the property, services or other resources of the state for private business or other compensated non-governmental purposes.

- e. No officer or employee of a state agency, member of the legislature or legislative employee should engage in any transaction as representative or agent of the state with any business entity in which he has a direct or indirect financial interest that might reasonably tend to conflict with the proper discharge of his official duties.
- f. An officer or employee of a state agency, member of the legislature or legislative employee should not by his conduct give reasonable basis for the impression that any person can improperly influence him or unduly enjoy his favor in the performance of his official duties, or that he is affected by the kinship, rank, position or influence of any party or person.
- g. An officer or employee of a state agency should abstain from making personal investments in enterprises which he has reason to believe may be directly involved in decisions to be made by him or which will otherwise create substantial conflict between his duty in the public interest and his private interest.
- h. An officer or employee of a state agency, member of the legislature or legislative employee should endeavor to pursue a course of conduct which will not raise suspicion among the public that he is likely to be engaged in acts that are in violation of his trust.
- i. No officer or employee of a state agency employed on a full-time basis nor any firm or association of which such an officer or employee is a member nor corporation a substantial portion of the stock of which is owned or controlled directly or indirectly by such officer or employee, should sell goods or services to any person, firm, corporation or association which is licensed or whose rates are fixed by the state agency in which such officer or employee serves or is employed.

**4. Violations.** In addition to any penalty contained in any other provision of law any such officer, member or employee who shall knowingly and intentionally violate any of the provisions of this section may be fined, suspended or removed from office or employment in the manner provided by law. Any such individual who knowingly and intentionally violates the provisions of paragraph b, c, d or i of subdivision three of this section shall be subject to a civil penalty in an amount not to exceed ten thousand dollars and the value of any gift, compensation or benefit received as a result of such violation. Any such individual who knowingly and intentionally violates the provisions of paragraph a, e or g of subdivision three of this section shall be subject to a civil penalty in an amount not to exceed the value of any gift, compensation or benefit received as a result of such violation.



Category:

HR / Labor Relations  
Legal and Compliance

Responsible Office:

[University Counsel](#)

Policy Title:

Conflict of Interest

Document Number:

6001

Effective Date:

October 01, 1995

This policy item applies to:

State-Operated Campuses

## Table of Contents

[Summary](#)

[Policy](#)

[Definitions](#)

[Other Related Information](#)

[Procedures](#)

[Forms](#)

[Authority](#)

[History](#)

[Appendices](#)

---

## Summary

Faculty and staff of the State University of New York (University) are encouraged to foster an atmosphere of academic freedom by promoting the open and timely exchange of scholarly knowledge independent of personal interests and are required to avoid conflicts of interest. Where potential or actual conflicts exist, faculty and staff are expected to consult with appropriate University officers and abide by University policy. This policy represents a restatement of existing University policy and pertinent state and federal law and regulations.

---

---

## Policy

Faculty and staff of the State University of New York (University) are encouraged to foster an atmosphere of academic freedom by promoting the open and timely exchange of scholarly knowledge independent of personal interests. In keeping with this obligation, they are also required to avoid conflicts of interest.

In instances where potential or actual conflicts exist, faculty and staff are expected to consult with appropriate University officers and abide by this University policy. It is the responsibility of campus officials charged with implementing this policy to identify potential or actual conflicts of interest and take appropriate steps to manage, reduce, or eliminate them.

This policy represents a restatement of existing University policy and pertinent state and federal law and regulations.

1. University faculty and staff may not engage in other employment which interferes with the performance of their professional obligation.
2. University faculty and staff are expected to comply with the New York State Public Officers Law provisions on conflict of interest and ethical conduct.
3. University faculty and staff, to the extent required by law or regulation, shall disclose at minimum whether they (and their spouses and dependent children) have employment or financial interests or hold significant offices, in external organizations that may affect, or appear to affect, the discharge of professional obligations to the University.
4. University campuses shall ensure that all faculty and staff subject to pertinent laws and regulations disclose financial interests in accordance with procedures to be established by the Chancellor or designee. Campuses shall retain the reported information as required, identify actual or apparent conflicts of interest and seek resolution of such conflicts.
5. Each campus president shall submit to the chancellor's designee the name and title of the person or persons designated as financial disclosure designee(s) and shall further notify the chancellor's designee when a change in that assignment occurs. The chancellor's designee shall also be notified of any reports regarding conflict of interest that are forwarded to state or federal agencies.

---

## Definitions

**Conflict of interest**— any interest, financial or otherwise, direct or indirect; participation in any business, transaction or professional activity; or incurring of any obligation of any nature, which is or appears to be in substantial conflict with the proper discharge of an employee's duties in the public interest. A conflict of interest is also any financial interest that will, or may be reasonably expected to, bias the design, conduct or reporting of sponsored research.

---

## Other Related Information

[Outside Activities of University Policy Makers](#)

---

[Ethics in State Government - A Guide for New York State Employees](#)

[National Science Foundation, Grant Policy Manual](#)

---

### **Procedures**

There are no procedures relevant to this policy.

---

### **Forms**

There are no forms relevant to this policy.

---

### **Authority**

[42 CFR 50, Subpart F](#)

The following link to FindLaw's [New York State Laws](#) is provided for users' convenience; it is not the official site for the State of New York laws.

[NYS Public Officers Law, Section 73-a, and 73 and 74](#)

In case of questions, readers are advised to refer to the New York State Legislature site for the menu of [New York State Consolidated](#).

[Board of Trustees Policies - Appointment of Employees \(8 NYCRR Part 335\)](#)

State University of New York Board of Trustees Resolution adopted June 27, 1995

---

### **History**

Memorandum to presidents from the office of the University provost, dated June 30, 1995 regarding revision to University conflict of interest policy to bring it in conformity with federal guidelines issued by the National Science Foundation and the Public Health Service.

---

---

## **Appendices**

There are no appendices relevant to this policy.

---



Category:  
Academic Affairs

Community Colleges  
Legal and Compliance  
Research

**Policy Title:**

START-UP NY Program Participation Policy

Document Number:

Effective Date:

February 10, 2014

This policy item applies to: Community  
Colleges

State-Operated Campuses

Responsible Office:

[Academic Affairs](#)

## Table of Contents

[Summary Policy](#)  
[Definitions](#)

[Other Related Information Procedures](#)

[Forms Authority](#)  
[History](#)  
[Appendices](#)

---

## Summary

START-UP NY is a state economic development program that positions SUNY campuses as magnets for entrepreneurs and businesses from around the globe. START-UP NY aligns with SUNY's mission of teaching, research and public service; enabling engagement with industry, knowledge acceleration, translation of research into practical applications, and delivering the 21<sup>st</sup> century workforce businesses need to grow and thrive.

START-UP NY will transform university communities to deliver unprecedented economic benefits to New York. To participate in the program, all campuses must comply with this policy and any applicable rules and regulations issued by the NYS Commissioner of Economic Development.

This policy governs the review process that all participating campuses must follow to secure SUNY's approval of the plans, applications, and other documents required by the NYS Commissioner of Economic Development to participate in the START-UP NY program. It also prescribes special requirements for the disclosure and management of actual or potential conflicts of interest in matters pertaining to the campus' START-UP NY program. Any conflict between this policy and any other applicable Conflict of Interest policy shall be resolved in favor of disclosure of any potential, actual, or perceived conflict of interest relating to the campus' START-UP NY program to the President or Chief Executive Officer of the sponsoring campus.

---

## Policy

- A. **Campus Plans for Designation of Tax-Free Area(s):** Any campus intending to submit a Campus Plan for Designation of Tax-Free Area(s) ("Campus Plan") to the NYS Commissioner of Economic Development must first have it reviewed and approved by the Chancellor or designee. The Chancellor or designee shall approve or reject all Campus Plans within fifteen (15) business days of receipt. Any rejected Campus Plan shall be accompanied by an explanation of the basis for rejection. Once approved by the Chancellor or designee a campus may submit its Campus Plan to the NYS Commissioner of Economic Development in accordance with the Commissioner's rules and regulations. Any Campus Plan that is rejected can be resubmitted for Chancellor or designee approval and will be reviewed in accordance with this policy and related procedures. Any amendments to approved Campus Plans must be submitted for Chancellor or designee approval and will be reviewed in accordance with this policy and related procedures.
  
  - B. **Sponsoring University or College Applications for Business Participation:** Any campus intending to submit a Sponsoring University or College Application for Business Participation ("Sponsor Application") to the NYS Commissioner of Economic Development must first have it reviewed and approved by the Chancellor or designee. The Chancellor or designee shall approve or reject all Sponsor Applications within thirty (30)
-



## 6800 - START-UP NY Program Participation Policy

business days of receipt. Any rejected Sponsor Application shall be accompanied by an explanation of the basis for rejection. Once approved the campus may submit the Sponsor Application to the NYS Commissioner of Economic Development in accordance with the Commissioner's rules and regulations. Any Sponsor Application that is rejected can be resubmitted for Chancellor or designee approval and will be reviewed in accordance with this policy and related procedures. Any amendments to approved Sponsor Applications must be submitted for Chancellor or designee approval and will be reviewed in accordance with this policy and related procedures.

- C. **Delegations:** The Chancellor or designee may charge a group of individuals, collectively called the SUNY START-UP NY Proposal Review Team, to evaluate all submitted Campus Plans and Sponsor Applications prior to accepting or rejecting them.
- D. **Conflicts of Interest:** Service as an Official shall not be used as a means for private benefit or inurement for any Official, a Relative thereof, or any entity in which the Official or Relative thereof has a Business Interest. A conflict of interest exists whenever an Official has a Business Interest or other interest or activity outside of the university that has the possibility, whether potential, actual, or perceived, of (a) compromising the Official's judgment, (b) influencing the Official's decision or behavior with respect to the START-UP NY Program, or (c) resulting in personal or a Relative's gain or advancement. Any Official who is an owner or employee of an entity that is the subject of any matter pertaining to the university's START-UP NY Program, or who has a Business Interest in any entity that is the subject of any matter pertaining to the university's START-UP NY Program, or whose Relative has such a Business Interest, shall not vote on or otherwise participate in the administration by the university of any START-UP NY matter involving such entity. Any Official or other campus representative who becomes aware of a potential, actual or apparent conflict of interest, either their own or that of another Official, related to a sponsoring university or college's START-UP NY program must disclose that interest to the President or Chief Executive Officer of the sponsoring college or university. Each such President or Chief Executive Officer shall maintain a written record of all disclosures of actual or potential conflicts of interest made pursuant to this policy, and shall report such disclosures on a calendar year basis, by January 31<sup>st</sup> of each year, to the University Auditor or to the Chancellor's designee, in which case the University Auditor shall be copied on the correspondence to such designee. SUNY shall then forward such reports to the Commissioner of Economic Development for the State of New York, who shall make public such reports.
- E. **Exceptions:** There are no exceptions to this policy.

---

## Definitions

**Business Interest** means that an individual (1) owns or controls 10% or more of the stock of an entity (or 1% in the case of an entity the stock of which is regularly traded on an established securities exchange); or (2) serves as an officer, director or partner of an entity.

**Official** means an employee at the level of dean and above as well as any other person with decision-making authority over a campus' START-UP NY Program, including any member of any panel or committee that recommends businesses for acceptance into the START-UP NY program.

**Relative** means any person living in the same household as another individual and any person who is a direct descendant of that individual's grandparents or the spouse of such descendant.

**Sponsoring College or University** means any entity defined or described in NYS Education Law Sec. 352 and Article 126.

**START-UP NY Program** means the SUNY Tax-free Areas to Revitalize and Transform Upstate New York Program established by Article 21 of the Economic Development Law.

**Tax-Free NY Area** means vacant land or space designated by the Commissioner of Economic Development Article

---

## 6800 - START-UP NY Program Participation Policy

21 of the Economic Development Law that is eligible to receive benefits under the START-UP NY program.

---

### **Other Related Information**

[Start-Up NY Regulations](#); available at the [Start-Up NY Website](#).

At least thirty days before submitting the Campus Plan to the Commissioner of Economic Development the campus must provide a copy of the Plan to the chief executive officer of the municipality or municipalities in which the proposed Tax-free NY Area is located, local economic development entities, the applicable university or college faculty senate, union representatives and the campus student government. The campus shall include in their submission to the Commissioner of Economic Development certification of such notification, as well as a copy of any written response from chief executive officer of the municipality or municipalities in which the proposed Tax-free NY Area is located, local economic development entities, the applicable campus or college faculty senate, union representatives and the campus student government.

[StartUp-NY.gov](#) website and program information.

---

### **Procedures**

[START-UP NY Program Participation, Procedures for](#)

---

### **Forms**

[SUNY START-UP NY Campus Plan for Designation of Tax-Free Area\(s\) Memorandum](#)

[SUNY START-UP NY Campus Plan for Designation of Tax-Free Area\(s\) Template](#)

[START-UP NY Sponsoring University or College Application for Business Participation Memorandum](#)

[ESD START-UP NY Sponsoring University or College Application for Business Participation](#)

[ESD START-UP NY Business Application Instructions](#)

[ESD START-UP Business Application](#)

---

**Authority**

[State University of New York Board of Trustees Resolution 14- \( \)](#), START-UP New York Program Administration, [adopted January 14, 2014](#)

[Law, New York Economic Development Law Article 21 \(Start-Up NY Program\) Start-Up NY Regulations](#)

---

## **History**

Enacted into law in June 2013, START-UP NY is a groundbreaking new initiative from Governor Andrew M. Cuomo that provides major incentives for businesses to relocate, start up or significantly expand in New York State through affiliations with public and private universities, colleges and community colleges. Businesses will have the opportunity to operate state and local tax-free on or near academic campuses, and their employees will pay no state or local personal income taxes.

---

## **Appendices**

There are no appendices relevant to this policy.



# Conflict of Interest Policy

**Effective Date:** March 15, 2013  
**Supersedes:** Conflicts of Interest Policy pursuant to 95-5 Resolution and the Procedure of Investigating Conflict of Interest Policy  
**Policy Review Date:** February 2016  
**Issuing Authority:** Research Foundation President  
**Responsible Party:** Chief Compliance Officer  
**Contact** (518) 434-7145  
**Information:** [rftcompliance@rfsuny.org](mailto:rftcompliance@rfsuny.org)

## Reason for Policy

As Research Foundation Board Members, Officers, and Employees, we hold positions of trust and must act in the best interests of the Research Foundation. We must avoid any activity that impairs or would reasonably appear to impair the ability to perform our duties with independence and objectivity. A conflict of interest arises if our personal relationships, activities, or finances interfere, or appear to interfere, with our ability to act in the best interests of the Research Foundation.

Research Foundation Board Members, Officers, and Employees must incorporate, where necessary and possible, the following rules into their services on behalf of the Research Foundation. Research Foundation Officers and Employees must adhere to the standards outlined in the New York State Public Officers Law Section [74](#). This policy incorporates the key standards outlined in Section [74](#).

## Statement of Policy

Research Foundation Board Members, Officers, and Employees may not have any interest or engage in any outside activity which results in an unmanaged conflict of interest. To this end, Board Members, Officers, and Employees must disclose their interests and outside activities, and those of a Related Party, which may affect their ability to perform their duties with independence and objectivity. A conflict of interest must be managed so the conflict is reduced or eliminated, and compliance with conflict of interest management plans should be monitored where necessary.

## Prohibited Conflicts of Interest

A conflict of interest exists if you or a Related Party has a Financial or Other Interest that will or may reasonably be expected to:

- substantially conflict with the proper discharge of your duties in the Research Foundation's best interests;
- result in the disclosure of the Research Foundation's information that you have gained by reason of your position or authority; or
- impair your ability to exercise independent judgment in the performance of your duties and responsibilities.

### **Conflicts of Interest Posed By Outside Employment, Investments, or Other Business Activities**

As a Research Foundation Board Member, Officer or Employee, you must not make personal investments in enterprises that you have reason to believe may be directly involved in decisions to be made by you or will otherwise create substantial conflict between your duty on behalf of the Research Foundation and your private interest.

If you or a Related Party has a Financial or Other Interest in any business entity, you may not represent the Research Foundation in any transaction with that entity and must disclose the interest in accordance with this policy and the Procedure for Managing Conflicts of Interest.

Procurement of goods or services by the Research Foundation shall be conducted consistent with the Foundation's established procurement policy.

You may not accept employment or engage in any business or professional activity that will impair the independence of your judgment in the exercise of your duties for the Research Foundation or require you to disclose confidential information that you gained by reason of your affiliation with the Research Foundation.

### **Prohibition Against Disclosure or Use of Confidential Material for Personal Gain**

The Research Foundation prohibits disclosure of information that is confidential to the Research Foundation, acquired by any Board Member, Officer, or Employee in the course of his/her duties, except as required by law or as expressly authorized in writing by an Officer or other designated representative of the Research Foundation.

Board Members, Officers, and Employees may only use such confidential information in furtherance of their duties as a representative of the Research Foundation and shall not use such confidential information to further their personal interests or that of a Related Party.

You must not accept employment or engage in any business or professional activity that will require you to disclose confidential information that you gained by reason of your official position or affiliation with the Research Foundation.

### **Use of Research Foundation or State Resources**

You may not misappropriate the property, services or other resources of the Research Foundation, SUNY, or others, whether for yourself or someone else.

### **Avoiding the Appearance of Impropriety**

Board Members, Officers, and Employees shall not, by their conduct, give reasonable basis for the impression that any person can improperly influence them or unduly enjoy their favor in performance of their duties, or that they are affected by the kinship, rank, position, or influence of any party or person.

You may not use, or attempt to use, your position to secure unwarranted privileges or exemptions for yourself or others.

Similarly, bribery, extortion, and other attempts to exert undue influence are strictly prohibited. The Research Foundation expects Research Foundation Board Members, Officers, and Employees to avoid any conduct that may give the appearance of engaging in acts that are in violation of their trust.

### **Disclosing a Real, Apparent, or Potential Conflict of Interest**

Board Members, Officers, and Employees must disclose all real, apparent, or potential conflicts of interest for review as described below. At an Operating Location, those disclosures should be made to the operations manager or his/her designee in accordance with this policy and the Procedure for Managing Conflicts of Interest. Disclosures are required in three instances:

1. **Annual Disclosures By Research Foundation Board Members, Officers, and Key Employees.** Board Members, Officers, and Key Employees must report Direct or Indirect Financial or other Interests that pose or may pose a real, apparent, or potential conflict of interest on an annual basis. These disclosures must be updated both annually and as new reportable interests are obtained or as new reportable activities occur.
2. **Grant-Related Disclosures.** Principal investigators must follow the policy at their respective campus locations.
3. **Situational Disclosures.** Board Members, Officers, and Employees must report any Direct or Indirect Financial Interest or other activity that may pose a conflict of interest under this policy. Such situational disclosures must be made as soon as practicable after the individual learns of the potential conflict.

When a disclosure is made under this policy, the actual, apparent, or potential conflict of interest will be reviewed pursuant to Procedure for Managing Conflicts of Interest. If a conflict of interest is found to exist, the Research Foundation must take steps to manage, reduce, or eliminate the conflict of interest. Individuals may appeal determinations with which they disagree. Please consult the Procedure for Managing Conflicts of Interest for more information.

### **Violation**

In addition to any penalty contained in any provision of law or federal or state policy, individuals who knowingly and intentionally violate any of these provisions may be subject to action by the Research Foundation. For employees, this may include action under the Research Foundation's progressive discipline policy, including suspension or termination from employment.

## **Recordkeeping**

The operating location operations manager must designate an appropriate office of record and must ensure that records related to the disclosure, review, and management of a potential, apparent, or actual conflict of interest are retained and documented. In addition to any recordkeeping process established by the operations manager, all final determinations or management plans must be included in the personnel file of the individual with potential, apparent, or actual conflict of interest.

At the central office, the chief compliance officer must ensure that records related to the disclosure, review, and management of a potential, apparent, or actual conflict of interest for all disclosures, at the central office or otherwise brought to the attention of the chief compliance officer, are retained and documented. In addition to any recordkeeping process established by the chief compliance officer, all final determinations or management plans must be included in the personnel file of the individual with potential, apparent, or actual conflict of interest.

## **Campus Policy**

An Operating Location may adopt a policy no less restrictive than this Policy. If a local policy is adopted, then a copy of that policy must be filed with the RF's chief compliance officer.

## **Staffing Services**

Employees employed by the RF under an agreement or contract, other than the 1977 Agreement between the RF and SUNY must adhere to the conflicts of interest policy in place by the entity the employees are employed to support. In the absence of a policy, the conflicts of interest policy effective at the associated operating location must govern.

## **Responsibilities**

The following table outlines the responsibilities for compliance with this policy:

<b>Responsible Party</b>	<b>Responsibility</b>
Board Members, Officers, and Key Employees	Annual Disclosures
Principal Investigators	Grant-Related Disclosures
Employees	Situational Disclosures as needed



## Definitions

*Board Member:* A member of the Research Foundation's board of directors.

*Direct or Indirect Financial or Other Interests:* Financial or Other Interests held by the Research Foundation Employee or by their spouse, domestic partner, significant other, family member, dependent, member of household, or business partner.

*Employee:* Officers, Key Employees, and any individual compensated employee of the Research Foundation.

*Financial or Other Interests:* Shall include, but are not limited to, the following:

- ownership or investment in any outside enterprise;
- serving as a director, officer, partner, consultant, broker, agent, or representatives of any outside enterprise;
- outside professional activity; or
- outside employment.

*Key Employee:* A "Key Employee" for purposes of this Policy includes:

1. Vice presidents;
2. Operations managers;
3. Deputy operations managers;
4. Chief research officers;
5. Technology transfer directors;
6. Sponsored program office directors or equivalent;
7. Other appointed officers
8. At the central office:
  1. Vice presidents
  2. Senior directors;
  3. Assistant Vice-Presidents; and
  4. Directors;
  5. Other appointed officers; and

9. Any other persons who have procurement authority equal to or exceeding \$100,000 per transaction.

*Officer:* An officer elected under the Research Foundation's bylaws, including the Research Foundation's president, general counsel, secretary, and chief financial officer and those appointed pursuant to Article IV Section 13 of the RF's bylaws as appointed officers.

*Operating Location:* Research Foundation office located at a SUNY campus location or other SUNY location supporting the Research Foundation mission and SUNY operations overseen by an operations manager.

*Operations Manager:* An individual appointed to the position of operations manager by the Research Foundation.

*Principal Investigator:* Primary individual(s) in charge of a research grant or other project administered by the Research Foundation. The term “Principal Investigator” includes those individuals serving as co-principal investigators.

*Related Party:* A Research Foundation Employee’s spouse, domestic partner, significant other, family member, dependent, member of household, or business partner.

*Research Foundation (or Foundation or RF):* The Research Foundation for The State University of New York.

## **Related Information**

[Management of Conflicts of Interest Procedure](#)

[Managing Conflicts of Interest Guidelines](#)

NYS Public Officer’s Law Sections [73](#) & [74](#)

[Conflicts of Interest in Public Health Service Sponsored Programs](#)

[Nepotism Policy](#)

[Gifts to Employees from Non-RF Sources Policy](#)

## **Forms**

[Conflict of Interest Annual Disclosure Statement](#)

[Conflict of Interest Situational Disclosure Statement](#)

## **Change History**

<b>Date</b>	<b>Summary of Change</b>
December 7, 2012	Clarifies who is required to disclose conflicts, how, and when. Also allows for locations to use their own conflicts of interest policies and procedures, provided the policy is submitted to the compliance office and is no less restrictive than RF policy. Effective 3/15/2013

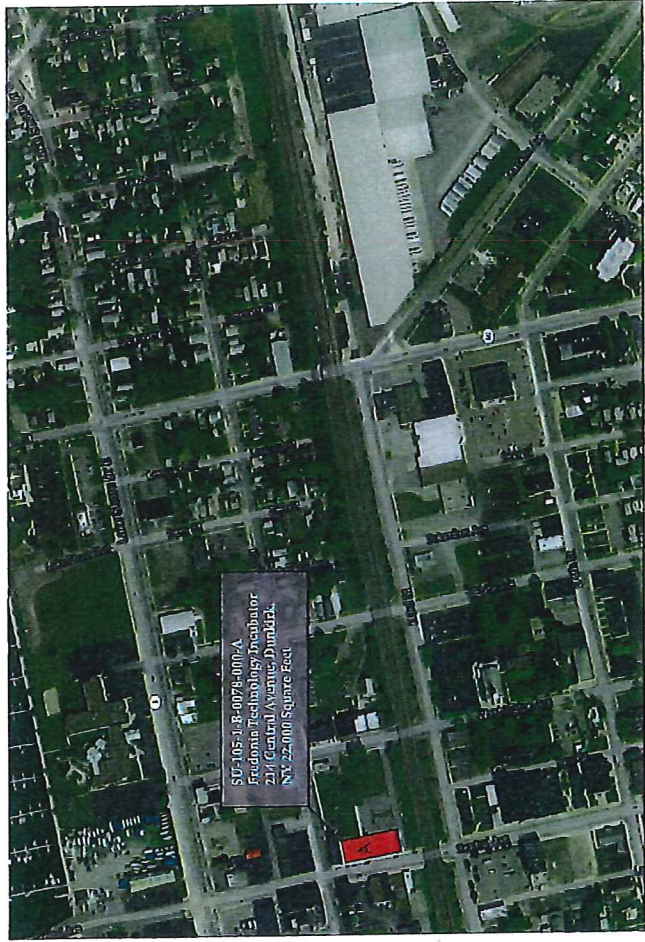
# Appendices

- A: Fredonia Technology Incubator (FTI) Map
- A.1: Fredonia Technology Incubator
- A.2: Fredonia Technology Incubator Floor Plans – 1<sup>st</sup> floor
- A.3: Fredonia Technology Incubator Floor Plans – 2<sup>nd</sup> floor
- B: Fredonia Campus Property
- C: Dunkirk Lakefront Property Map
- D: 75 Bourne Street Westfield – Google Map
- D.1: 75 Bourne Street Westfield – Photo
- D.2: 75 Bourne Street Westfield – Floor Plan
- E: Hangar A – 3301 Turner Road – Town of Ellicott Map
- E.1: Hangar A – 3301 Turner Road – Town of Ellicott - Photo
- E.2: Hangar A – 3301 Turner Road – Town of Ellicott – Property
- E.3: Hangar A – 3301 Turner Road – Town of Ellicott - Site Plan
- F: Fredonia-Dunkirk StartUP NY Property Map
- G: Fredonia Campus Plan Handout
- H: WNY Innovation Hot Spot Agreement

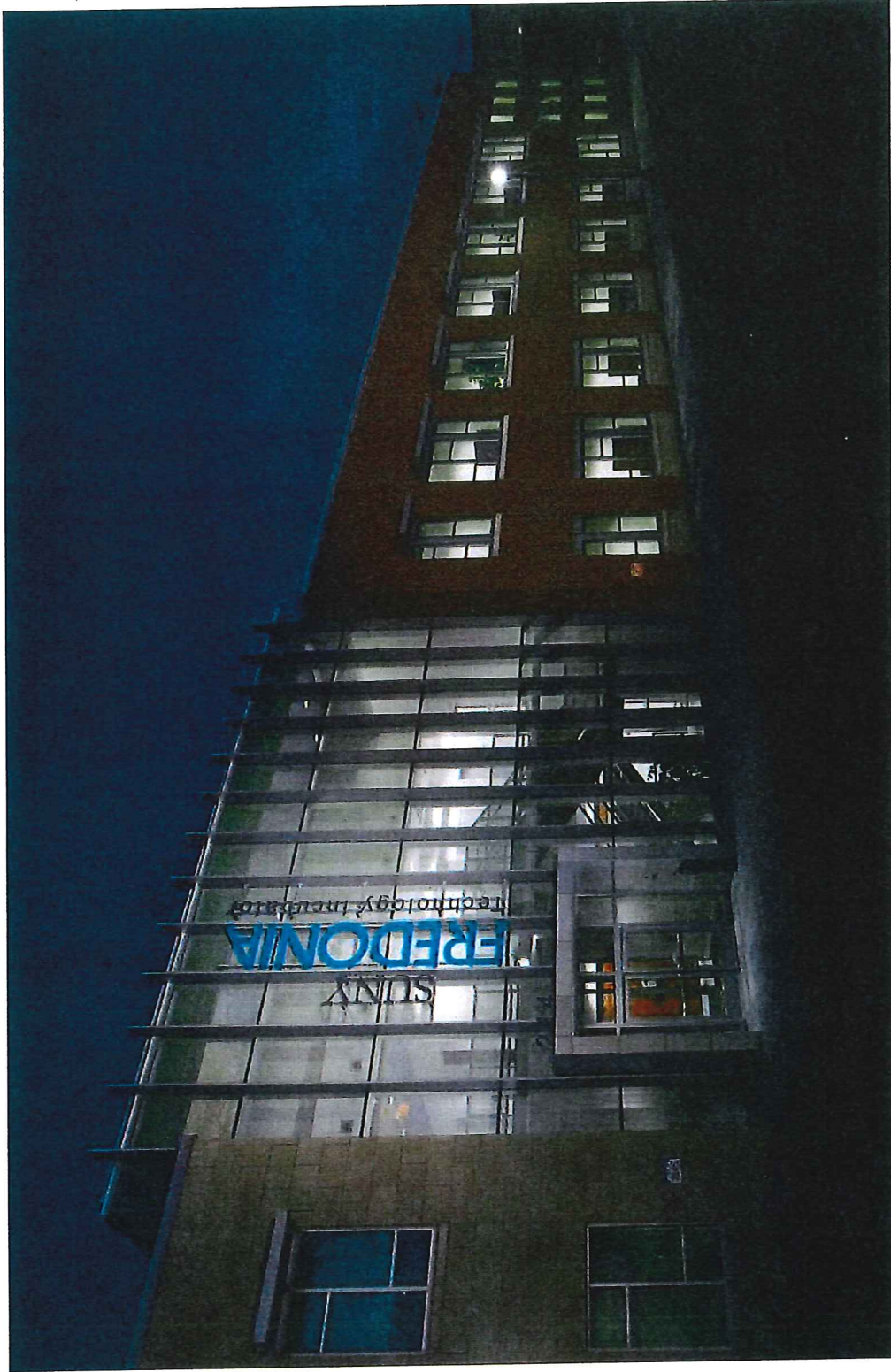
FREDONIA  
COMMUNITY DEVELOPMENT

Fredonia Startup Property

STARTUP NY



A: Fredonia Technology Incubator Map



## A.1: Fredonia Technology Incubator



REFERENCE:

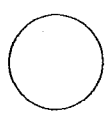
CONTRACTOR:  
 FREDONIA  
 574 CENTRAL AVENUE  
 FREDONIA, NY 14850  
 TEL: 716/353-2200  
 FAX: 716/353-2201  
 WWW.FREDONIA.COM



SUNY  
 FREDONIA  
 574 CENTRAL AVENUE  
 FREDONIA, NY 14850  
 TEL: 716/353-2200  
 FAX: 716/353-2201  
 WWW.FREDONIA.COM

Technology  
 Incubator

JCA ARCHITECTURE  
 317 WEST 10TH STREET  
 FREDONIA, NY 14850  
 TEL: 716/353-2200  
 FAX: 716/353-2201  
 WWW.JCAARCHITECTURE.COM



P.C.  
 P.H.  
 J.C.  
 ISSUE: 04/21/2008  
 JOB: 107070205  
 SCALE: 1/8" = 1'-0"  
 UPPER LEVEL  
 FLOOR PLAN

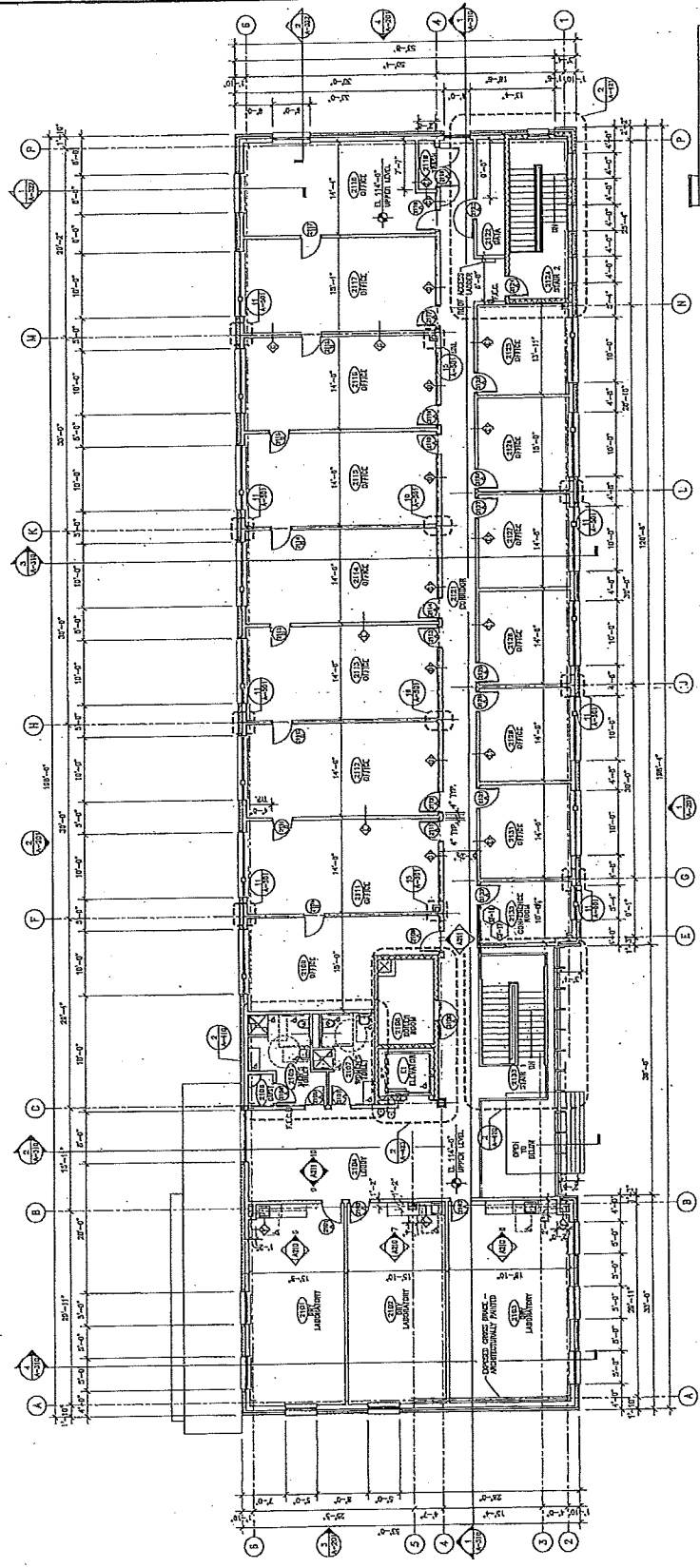
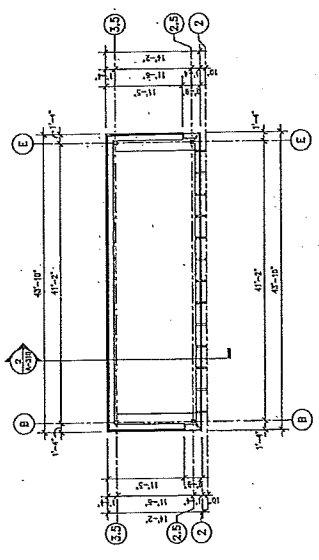
A-121

GENERAL NOTES:

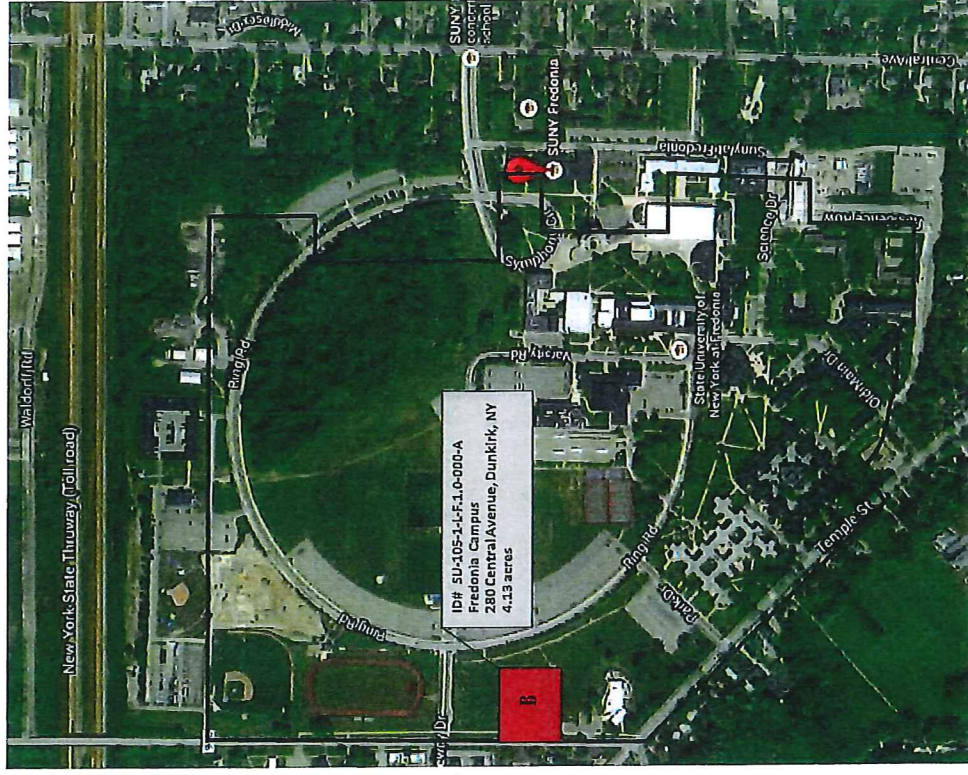
1. REFER TO DRAWING IN CASE FOR TYPICAL NOTES.
2. REFER TO GENERAL MECHANICAL, ELECTRICAL, PLUMBING AND FIRE PROTECTION DRAWINGS FOR ADDITIONAL INFORMATION.
3. VERIFY CONDITIONS OF FIELDWORK AND REPORT OF THESE CONDITIONS.
4. ALL WORK SHALL BE COMPLETED AS SHOWN ON THIS DRAWING AND SHALL BE SUBJECT TO INSPECTION BY THE ARCHITECT.
5. ALL WORK SHALL BE COMPLETED AS SHOWN ON THIS DRAWING AND SHALL BE SUBJECT TO INSPECTION BY THE ARCHITECT.
6. ALL WORK SHALL BE COMPLETED AS SHOWN ON THIS DRAWING AND SHALL BE SUBJECT TO INSPECTION BY THE ARCHITECT.
7. GENERAL NOTES TO BE OBSERVED BY THE CONTRACTOR AND SHALL BE SUBJECT TO INSPECTION BY THE ARCHITECT.
8. ALL WORK SHALL BE COMPLETED AS SHOWN ON THIS DRAWING AND SHALL BE SUBJECT TO INSPECTION BY THE ARCHITECT.
9. ALL WORK SHALL BE COMPLETED AS SHOWN ON THIS DRAWING AND SHALL BE SUBJECT TO INSPECTION BY THE ARCHITECT.
10. ALL WORK SHALL BE COMPLETED AS SHOWN ON THIS DRAWING AND SHALL BE SUBJECT TO INSPECTION BY THE ARCHITECT.

A.3: Fredonia Technology Incubator  
 Floor Plans - 2nd Floor

SU-105-1-B-0078-000-A (10,545 square feet)



1 UPPER LEVEL FLOOR PLAN



## B: Fredonia Campus Property





Fredonia StartUP Property



ID# SU-105-2-J-D.1.0-000-A  
City of Dunkirk Lakefront Land,  
Lake Shore Drive East, Dunkirk, NY  
1.86 Acres

C: Dunkirk Lakefront Property Map

ID# SU-105-2-B-W.1.0-000-A  
75 Bourne Street, Westfield, NY 14757  
15,630 Square Feet

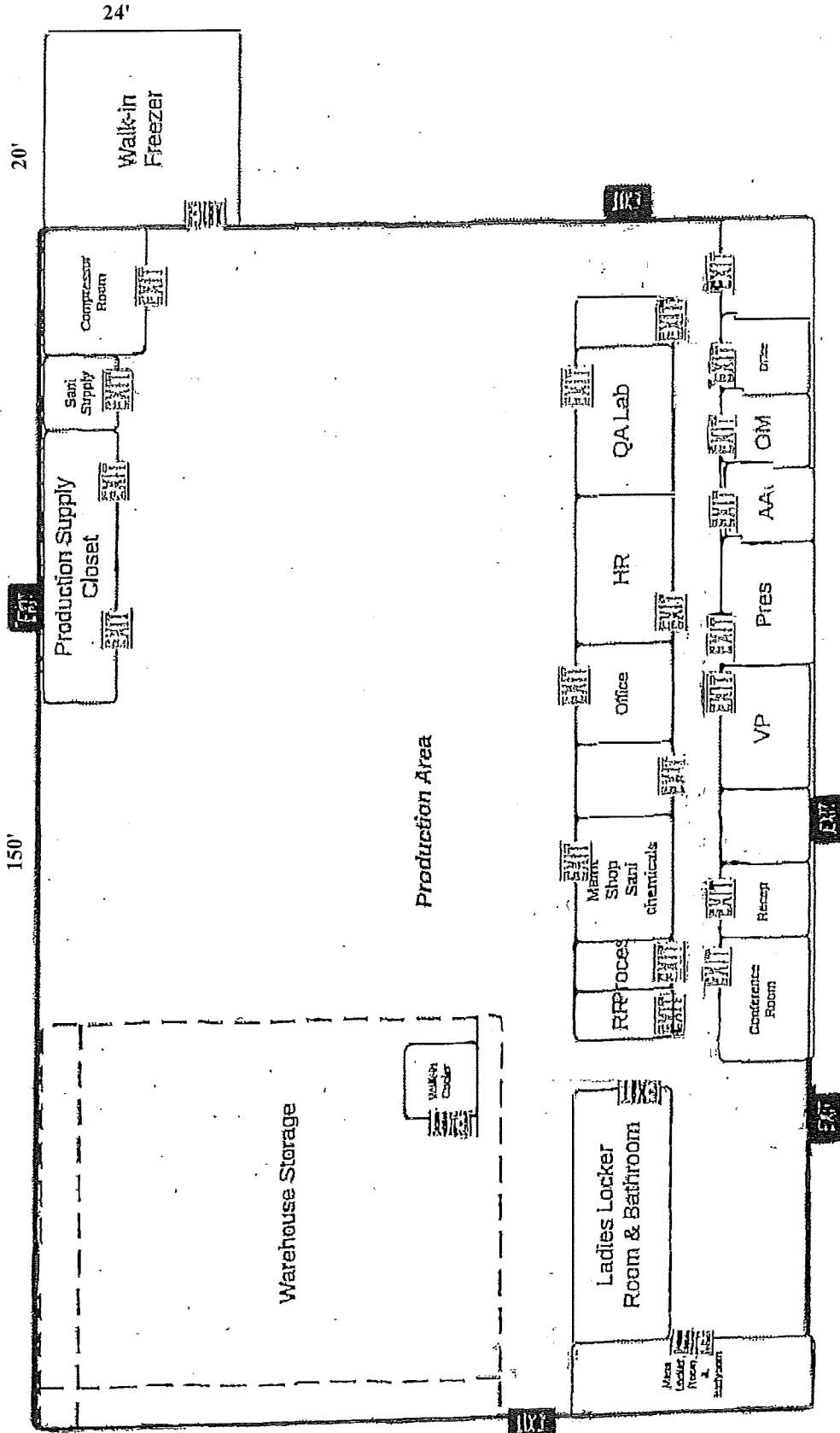


D: 75 Bourne Street, Westfield - Building Map



**D.1: 75 Bourne Street, Westfield**

**D.2: 75 Bourne Street, Westfield - Building Floor Plan  
 ID# SU-105-2-B-W.1.0-000-A (15,630 square feet)**





**E: Hangar A - 3301 Turner Road - Town of Ellicott**

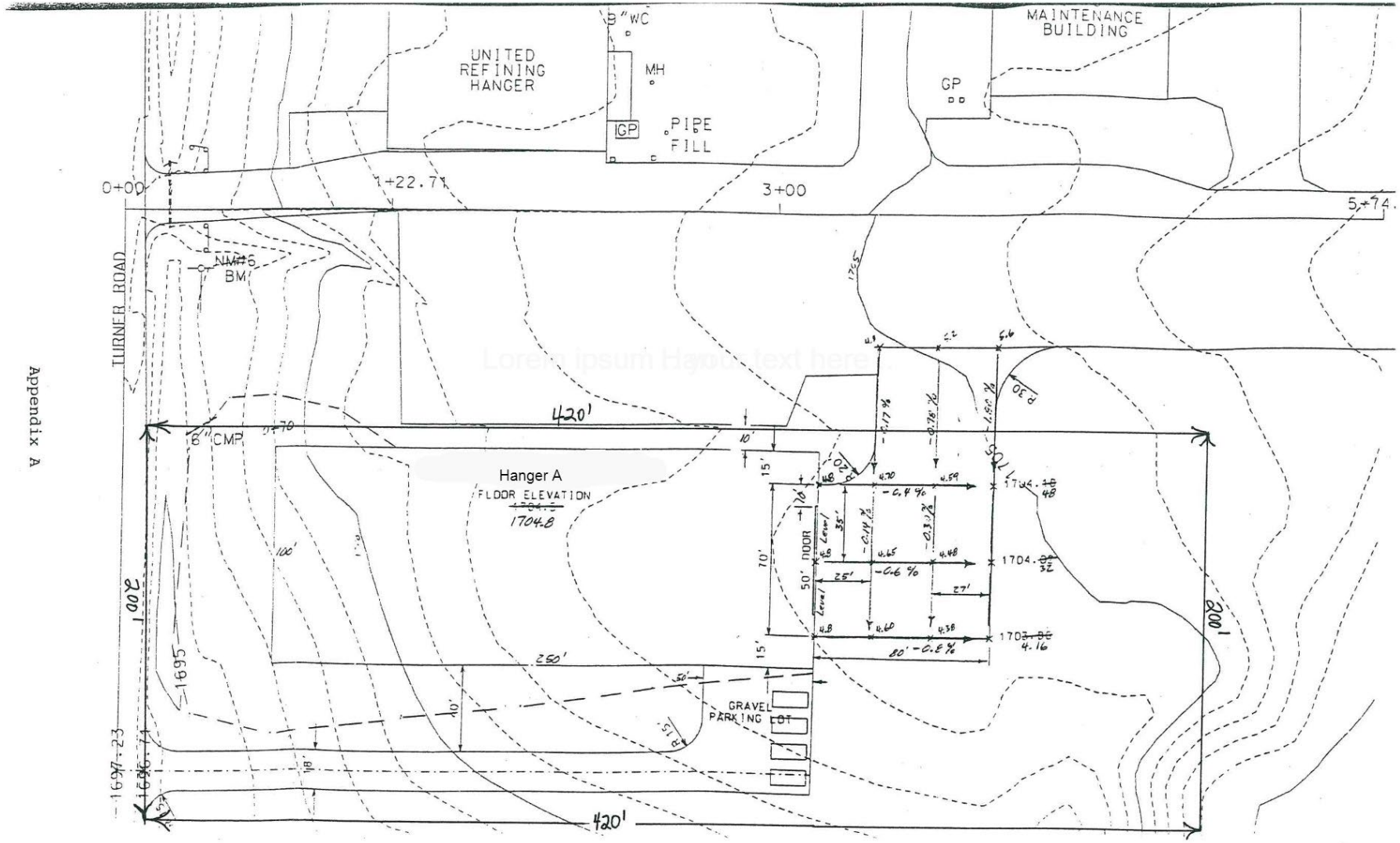
**E.1: Hangar A – 3301 Turner Road – Town of Ellicott**





### E.3: Hangar A – 3301 Turner Road – Town of Ellicott


SU-105-1-B-0091-000-A (25,400 square feet)



Appendix A

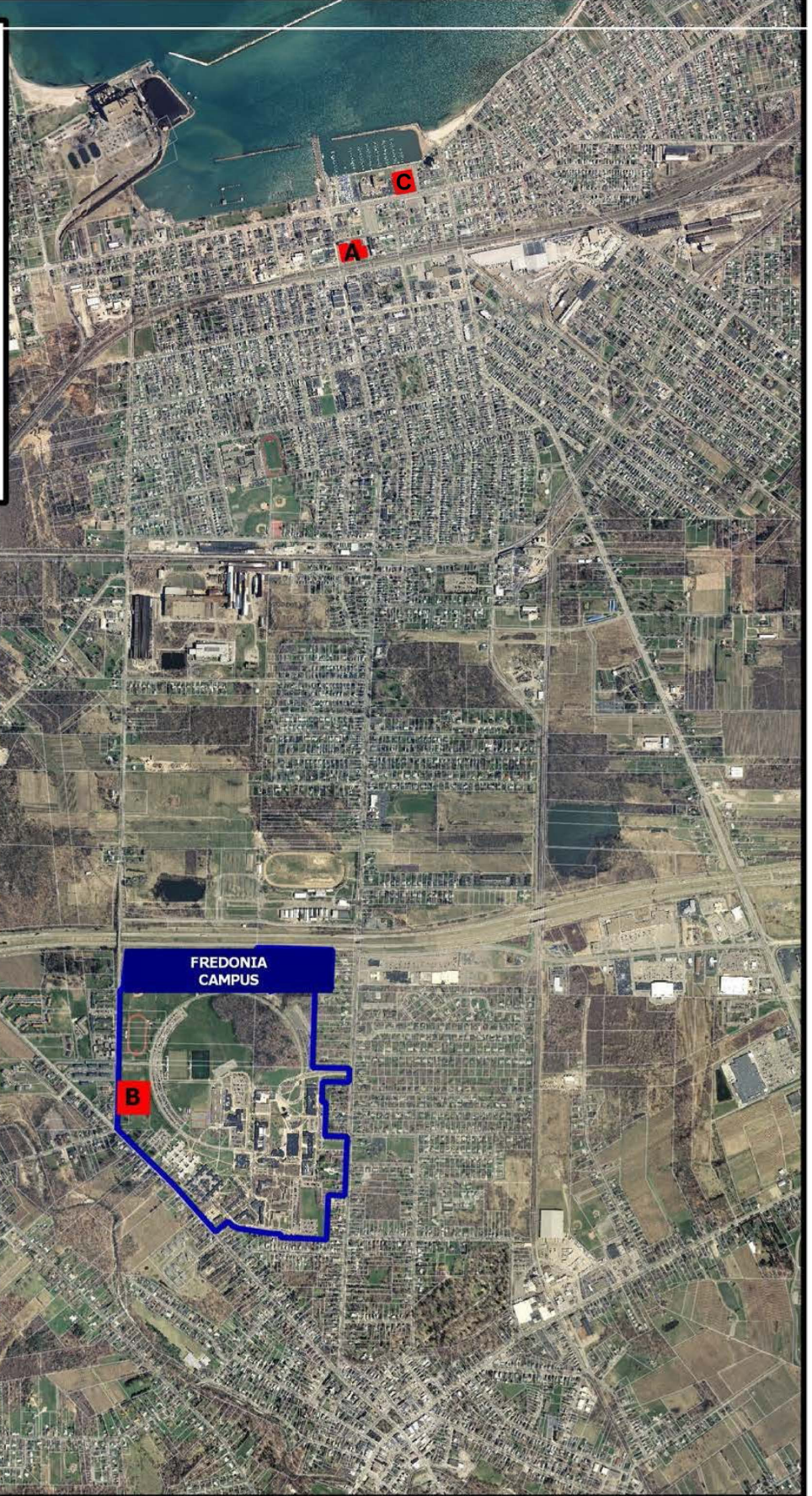


- A** ID# SU-105-1-B-0078-000-A  
Fredonia Technology Incubator  
214 Central Avenue, Dunkirk, NY  
22,000 square feet
- B** ID# SU-105-1-L-F.1.0-000-A  
Fredonia Campus  
280 Central Avenue, Dunkirk, NY  
4.13 acres
- C** ID# SU-105-2-L-D.1.0-000-A  
Dunkirk Lakefront Land  
Lake Shore Drive East, Dunkirk, NY  
1.86 acres

 Fredonia Campus

0 1000 2000 feet

N



# G: Fredonia Campus Plan Handout



Kevin P. Kearns, Interim Provost and Vice President  
Academic Affairs  
E-mail: [Kevin.Kearns@fredonia.edu](mailto:Kevin.Kearns@fredonia.edu)  
Phone: (716) 673- 3758

## StartUP Program:

The goal of StartUP NY is to attract businesses to New York State and to support job expansion by existing state companies through creation of tax-free zones on or near approved colleges and universities. Participating businesses must be sponsored by a state-approved college or university. StartUP provides ten years of major state tax benefits to relocate, start, or expand businesses. In addition, new employees of sponsored businesses will not pay state income tax while they are in the program. The program will benefit all state residents through new direct spending, resident taxes, and by increased homeownership demand in our communities.

## Eligibility:

Technology, manufacturing, and many other businesses that create net new jobs are eligible to participate in the program. Some sectors, including retail and wholesale businesses, restaurants, real estate brokers, law firms, medical and dental practices, accounting and financial services, and hospitality businesses, are excluded from participation.

Businesses approved under the StartUP NY program must demonstrate support for the host campus's academic mission. Support for a university or college's mission will be evaluated according to criteria established by the host campus community

## Eligible Properties and Space:

StartUP NY businesses will occupy property or land affiliated with a college or university. Space and land on or near campus may be eligible for occupancy.

- All campus space and land is eligible under the program
  - Space cannot result from displacement of campus programs
- Up to 200,000 sf of adjacent property, generally within a one mile radius of campus, is also eligible
  - Space that is affiliated with, but not owned by, the campus may be eligible for inclusion

## G: Fredonia Campus Plan Handout

Business Eligibility:

Businesses must meet the following criteria to qualify for the StartUP NY program:

- 1) A demonstrated commitment to create net new jobs. The new jobs may result from business expansions, relocations, or startups:
  - a. There is a state-wide cap of 10,000 new jobs per year
  - b. There is no minimum number of new jobs required for businesses seeking entry into the program
- 2) Business must be acceptable to the community and may not compete with existing businesses in the community
- 3) Fit with the campus mission must be clearly delineated in the StartUP application

The State of New York at Fredonia Campus Plan:

StartUP NY Committee:

Fredonia has established a StartUP NY committee that has drafted a campus plan. The committee will review business applications and make recommendations to the President and Cabinet regarding sponsorship of applicant businesses. Kevin P. Kearns, Interim Provost and Vice President for Academic Affairs, serves as chair of the committee. Fredonia committee members include representatives from the University Senate Planning and Budget Committee, the United University Professions (UUP), and an undergraduate student. Internal committee members include a professor of Business/Entrepreneurship, the Director of the Fredonia Technology Incubator, and two Fredonia Vice Presidents (Finance and Administration, and University Advancement). External committee members include the mayors of the City of Dunkirk and the Village of Fredonia, the Planning Director for the City of Dunkirk, a member of the Fredonia College Council, the Executive Director of the Chautauqua Co. IDA, and an Emeritus Professor/community development leader.

The State of New York at Fredonia Campus Plan:

The primary components of the Campus Plan include *space* which has been dedicated for use under the StartUP program, targeted *business clusters*, and fit with the *Fredonia mission*.

Space designated for the Fredonia plan includes:

- 1) The Fredonia Technology Incubator (22,000 sf)
- 2) Fredonia campus property\* (4.13 acres of buildable land)
- 3) Hangar A: 3301 Turner Road in the Town of Ellicott, NY (25,400 sf)
- 4) A waterfront parcel on Dunkirk harbor (1.86 acres of buildable land)
- 5) Food manufacturing facility in Westfield, NY (15,630 sf)

\*On the west side of campus, near Brigham Rd.

## **G: Fredonia Campus Plan Handout**

### Business Clusters:

Four primary business clusters have been identified in the Fredonia plan:

- 1) Agribusiness, including those businesses that support the food processing industry (i.e. the supply chain).
- 2) Technology businesses, particularly those relating to the visual arts and new media, and social media applications.
- 3) Lake Erie research and development, and educational tourism.
- 4) Business opportunities directly related to Fredonia's academic mission.

### Mission Fit:

Businesses accepted into the StartUP NY program at Fredonia must be committed to partnering in one or more of the following areas:

1. Undergraduate, graduate, and professional education
2. Research
3. Leadership
4. Diversity/cultural initiatives
5. Regional economic development
6. Internships and co-curricular activities
7. Job creation
8. Internationalization of the campus
9. Other: Businesses may contribute to our academic mission in other ways that enhance our learning community.

# H: WNY Innovation Hot Spot MOU



Baird Research Park  
1576 Sweet Home Road  
Amherst, New York 14228  
Tel: (716) 645-5500  
Fax: (716) 636-5921

## MEMORANDUM OF UNDERSTANDING

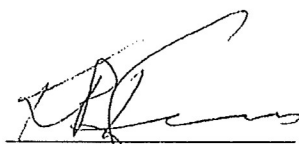
*The WNY Innovation Hot Spot brings together the resources of the region's business incubators and startup business programs to provide a comprehensive set of programs and services and help incubator clients achieve sustainable growth.*

As a partner in the WNY Innovation Hot Spot, Fredonia Technology Incubator agrees to work collaboratively, sharing information and best practices to continue Western New York's growth as a hub for entrepreneurs and incubation services.

Fredonia Technology Incubator agrees to share and report on their roster of qualifying client companies, their relevant contact information, economic impact metrics (to be defined by NYSTAR/Empire State Development - may include revenue, expenditures, employee count, etc.), and milestones with Hot Spot staff and NYSTAR/ESD.

Fredonia Technology Incubator agrees to actively collaborate in Hot Spot activities including events, strategy meetings, mentoring, development of best practices (ex: processes, procedures, graduation criteria, etc.).

We acknowledge that Fredonia Technology Incubator's participation and reporting is vital to our clients' eligibility for Start-Up NY and Innovation Hot Spot tax benefits.

  
Kevin Kearns  
Fredonia Technology Incubator

7/21/14  
Date

  
Thomas Murdock  
WNY Innovation Hot Spot

7/29/14  
Date